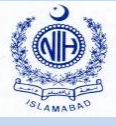




Field Epidemiology and Disease Surveillance Division (FEDSD)

National Institute of Health (NIH), Islamabad

Phone: 051- 9255237, Email: idsr-pak@nih.org.pk



Weekly Bulletin: Integrated Disease Surveillance and Response (IDSR)

10th February 2022

Highlights of the Epi-Week-5 (31st January 2022 – 06th February 2022)

Cumulative Information

- During this week, maximum cases reported were of ILI, Acute Diarrhea (Non Cholera), SARI, ALRI <5 years, Malaria, B. Diarrhea, Typhoid, AWD (S. Cholera), Rabies/Dog bite, & VH (B, C & D).
- In comparison with previous week i.e. Week-04, cases of all reported diseases depicted a downward trend.
- Cases of VPDs reported from all over Pakistan need immediate attention of Immunization program to strengthen control the spread of VPDs.
- Cases of AFP have been reported from KP and Sindh which need immediate verification and response accordingly.
- Cases of VH (B, C & D) and AVH (A&E) are regularly reported from Sindh & KP province need urgent attention to confirm and implement control measures accordingly.
- Cases of Rabies/Dog bite are regularly reported. An immediate attention is required by adopting a multi-sectoral One-Health approach.
- Bloody diarrhea, AWD (S. Cholera) and Typhoid cases are also reported from KP, Sindh and Balochistan. Public health measures need to be implemented on priority basis.

Figure 1: Most frequently reported cases during week 5, in comparison with previous weeks, Pakistan

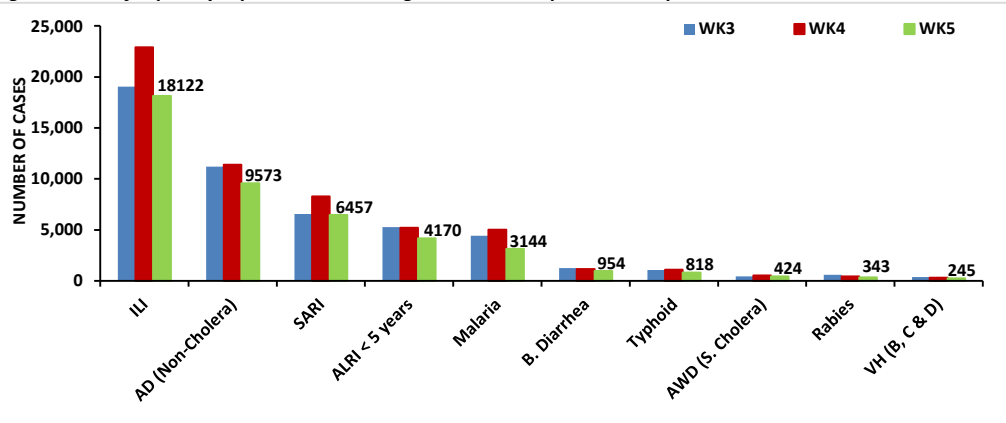


Table 1: Province/Area wise distribution of most frequently reported cases during week 5, Pakistan

Diseases	AJK	Balochistan	GB	ICT	KP	Punjab	Sindh	Total
ILI	72	4,252	51	867	5,022	395	7,463	18,122
AD (Non-Cholera)	68	1,271	2	173	3,665	198	4,196	9,573
SARI	5	460	12	15	5,742	122	101	6,457
ALRI < 5 years	31	471	15	309	1,533	177	1,634	4,170
Malaria	1	424	0	1	1,077	130	1,511	3,144
B. Diarrhea	2	233	0	8	225	19	467	954
Typhoid	0	157	0	2	374	61	224	818
AWD (S. Cholera)	0	7	4	1	208	42	162	424
Rabies / Dog bite	0	29	0	0	178	1	135	343
VH (B, C & D)	0	13	0	0	93	24	115	245
Measles	0	20	0	3	127	2	8	160
AVH (A & E)	0	0	0	0	85	5	27	117
Mumps	0	11	0	0	52	8	13	84
Chickenpox/ Varicella	1	12	1	4	52	2	15	87
Pertussis	0	17	0	0	7	14	6	44
Gonorrhoea	0	16	0	0	5	7	20	48
Meningitis	0	1	0	0	7	5	6	19
AFP	0	0	0	0	6	0	5	11
Diphtheria (Probable)	0	2	0	0	1	2	0	5

Points of Attention

- Routine immunization is affected due to pandemic control activities, and regular Polio campaigns, resultantly cases of VPDs are increasing. **Therefore, strengthened coordination with EPI is needed for reduction in the cases.**
- Malaria, and Typhoid cases are continuously reported especially from Balochistan and Sindh. It is emphasized that hotspot areas should be identified for epidemiological investigations and timely response.**
- It is proposed to enhance community awareness on water, sanitation and hygiene (WASH) practices.
- STI cases especially Gonorrhoea, and Syphilis cases are regularly reported. These need investigation, and confirmation. Afterwards public health response actions need to be implemented in the affected areas.**
- Burden of zoonotic diseases including dog bite is increasing across Pakistan. There is need to conduct community awareness sessions regularly, and also prepare and implement a comprehensive Rabies control plan based on One Health approach at provincial level.
- IDSR focal persons may share alert verification and outbreak investigation reports.** This will help in identifying disease burden, circulating pathogens and devising national strategies for prevention & control of diseases.

Sindh

- Sindh reported maximum cases of ILI (n=7,286), AD (Non Cholera) (n=4,096), ALRI <5 Years (n=1,628), Malaria (n=1,506), B. diarrhea (n=464), Typhoid (n=223), AWD (S. Cholera) (n=162), Rabies/ Dog bite (n=125), VH (B, C & D) (n=115), & SARI (n=80).
- District Ghotki reported the maximum cases of ILI, ALRI <5 years & AD (Non Cholera).
- District Hyderabad reported maximum cases of ILI, AD (Non Cholera), ALRI <5 years & B. diarrhea.
- District Kamber reported maximum cases of Malaria, AD (Non Cholera) & ALRI <5 years.
- From Karachi East, maximum cases reported were of AD (Non Cholera).
- From Karachi Malir, maximum cases reported were of AD (Non Cholera), ILI & ALRI <5 years.
- From Larkana, cases of Malaria & AD (Non Cholera) were reported at maximum.
- District Naushahro Feroze reported maximum cases of ILI, Malaria and AD (Non Cholera).
- District Shikarpur reported AD (Non Cholera) & Malaria cases at maximum.
- From Tharparkar, maximum cases of ILI, AD (Non-Cholera), ALRI <5 years & Malaria were reported.
- From Thatta, cases of AD (Non Cholera) & Malaria were reported at maximum.
- Routine immunization need to strengthen to decrease VPDs.
- Persistent reporting of HIV/AIDS cases needs attention and public health response.
- This week, cases of ILI, ALRI <5 years & AD (Non Cholera) declined as compared to previous week.

(Note: NR= Not Reported)

Figure 2: Most frequently reported cases during week 5, in comparison with previous weeks, Sindh

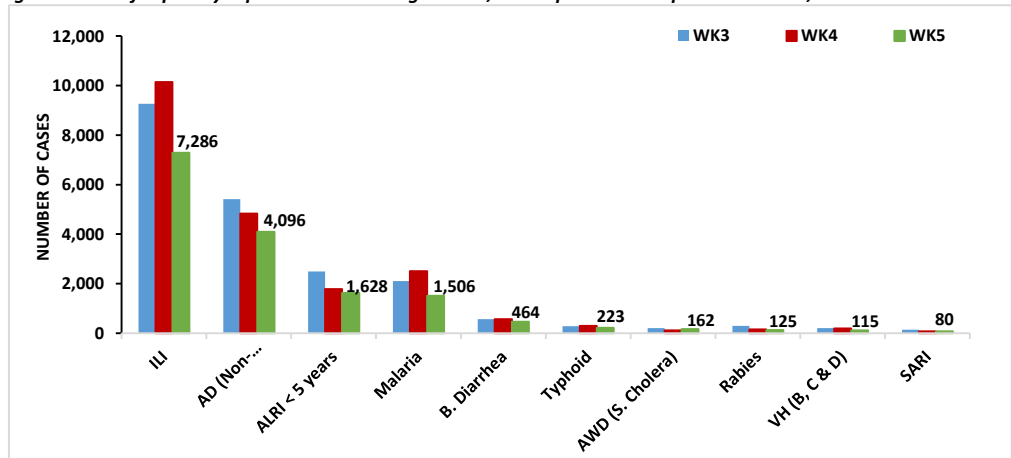
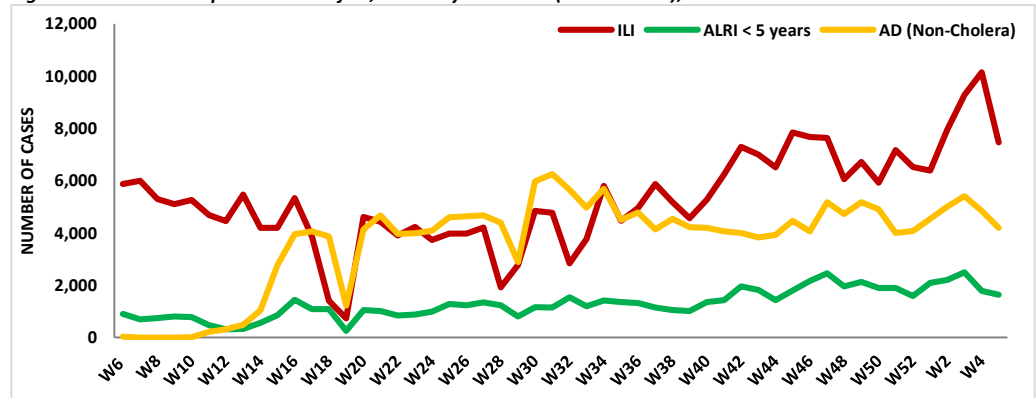


Table 2: District wise distribution of most frequently reported cases during week 5, Sindh

Diseases	Ghotki	Hyderabad	Kamber	Karachi East	Karachi Malir	Larkana	N. Feroze	Shikarpur	Tharparkar	Thatta
ILI	656	3,978	0	2	487	0	510	0	1,822	8
AD (Non-Cholera)	230	1,580	194	141	543	248	131	141	859	129
ALRI < 5 years	237	257	96	6	333	52	56	12	524	61
Malaria	85	26	194	23	80	351	170	83	413	86
B. Diarrhea	79	120	49	4	61	26	8	25	61	34
Typhoid	18	27	14	0	37	24	38	0	53	13
AWD (S. Cholera)	35	79	0	0	32	0	0	0	0	16
Rabies / Dog bite	50	2	0	0	42	1	2	35	3	0
VH (B, C & D)	15	41	5	0	9	14	3	0	15	13
SARI	11	22	0	0	26	2	0	0	40	0
AVH (A & E)	5	9	0	0	0	0	3	0	7	3
Gonorrhea	0	3	0	0	7	0	2	0	0	8
Chickenpox/ Varicella	1	5	2	1	0	0	0	0	6	0
Mumps	2	3	0	0	8	0	0	0	0	0
Measles	0	1	0	0	1	0	0	0	6	0
HIV/AIDS	0	2	0	0	0	6	0	0	0	0
Meningitis	0	NR	0	0	0	0	0	0	6	0
Pertussis	0	NR	0	0	1	0	0	0	0	5
AFP	1	NR	0	0	1	0	0	2	1	0

Figure 3: Week wise reported cases of ILI, ALRI <5 years & AD (Non Cholera), Sindh



Balochistan

- From Balochistan overall ILI (n=4,252), AD (Non Cholera) (n=1,271), ALRI <5 years (n=471), SARI (n=460), Malaria (n=424), B. diarrhea (n=233), Typhoid (n=157), CL (n=124), Rabies/Dog bite (n=75) & Measles (n=20) remained at maximum.
- District Gwadar reported maximum cases of ILI and AD (Non Cholera).
- District Kech reported cases of ILI, AD (Non Cholera), ALRI <5 years & SARI at maximum.
- District Khuzdar reported maximum cases of ILI.
- District Killa Abdullah reported maximum cases of ILI & AD (Non Cholera).
- District Lasbella reported maximum cases for AD (Non-Cholera), ALRI <5 years & Malaria.
- District Naseerabad reported Malaria cases at maximum.
- District Pishin reported cases for ILI at maximum.
- District Quetta reported maximum cases for ILI & AD (Non-Cholera).
- Sibi reported cases of ILI at maximum.
- District Zhob reported maximum cases of SARI & ILI.
- Persistent reporting of Gonorrhoea cases needs investigation for differential diagnosis, follow up & treatment
- Cases of VPDs are reported regularly reported, and therefore, needs strengthening of routine immunization system.
- In comparison with last week, cases of ILI, SARI & ALRI <5 years depicted a downward trend.

Figure 4: Most frequently reported cases during week 5, in comparison with previous weeks, Balochistan

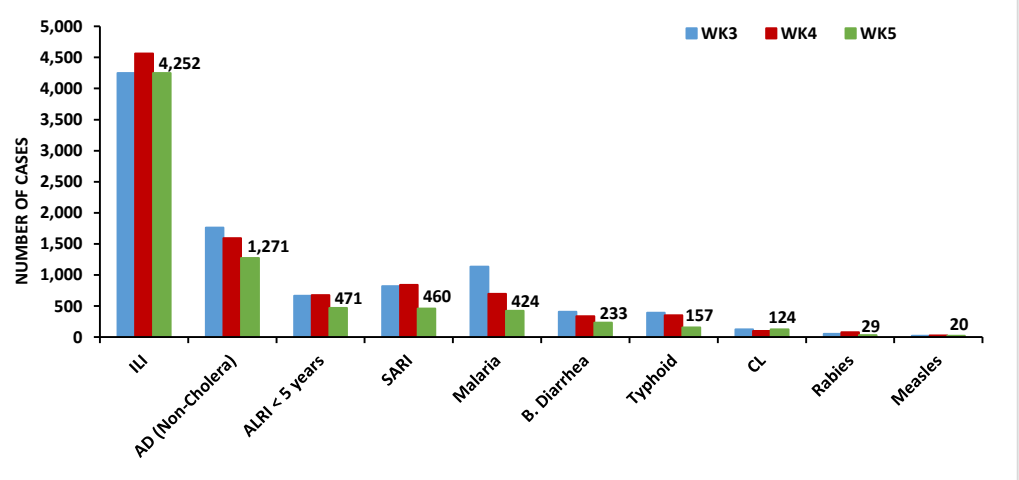
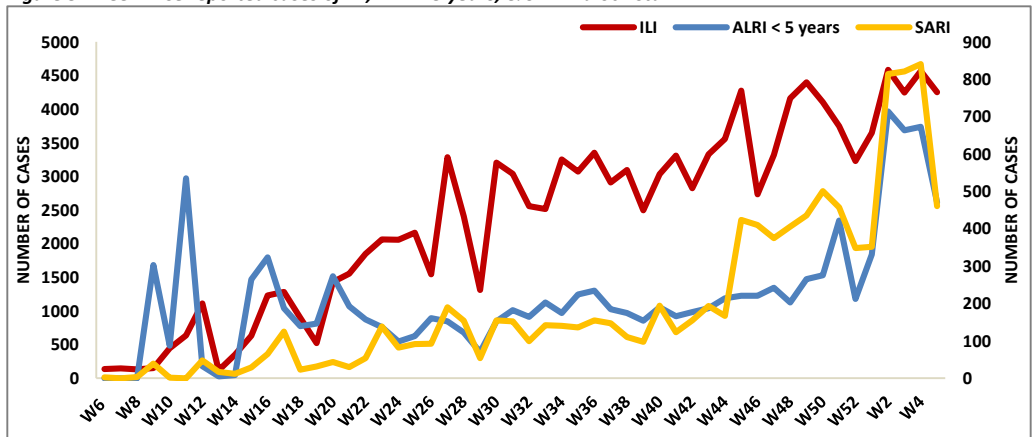


Table 3: District wise distribution of most frequently reported cases during week 5, Balochistan

Diseases	Gwadar	Kech (Turbat)	Khuzdar	Killa Abdullah	Lasbella	Naseerabad	Pishin	Quetta	Sibi	Zhob
ILI	542	2,185	131	266	79	19	280	471	154	125
AD (Non-Cholera)	170	386	62	125	212	69	35	140	49	23
ALRI < 5 years	6	163	8	NR	174	9	74	0	23	14
SARI	NR	165	14	0	50	8	4	0	15	204
Malaria	5	67	45	9	135	82	2	21	22	36
B. Diarrhea	14	67	34	0	20	6	18	32	19	23
Typhoid	2	11	47	4	14	31	13	20	12	3
CL	NR	0	7	29	34	5	8	38	3	0
Rabies / Dog bite	NR	2	12	3	4	1	5	0	2	0
Measles	NR	4	5	4	7	0	0	0	0	0
Pertussis	NR	0	4	0	0	1	0	0	1	11
Gonorrhoea	NR	0	2	NR	0	0	13	0	1	0
VH (B, C & D)	NR	0	1	NR	12	0	0	0	0	0
Chickenpox/ Varicella	NR	0	NR	NR	4	1	0	0	4	3
Mumps	NR	1	NR	0	0	2	3	0	4	1
AWD (S. Cholera)	NR	0	NR	NR	2	1	0	0	4	0
Rubella (CRS)	NR	0	NR	NR	0	2	0	0	0	0
Meningitis	NR	0	NR	NR	0	0	0	1	0	0

Figure 5: Week wise reported cases of ILI, ALRI <5 years, & SARI Balochistan



Khyber Pakhtunkhwa (KP)

- KP reported cases of SARI (n=5,742), ILI (n=5,022), AD (Non Cholera) (n=3,665), ALRI <5 years (n=1,533), Malaria (n=1,077), Typhoid (n=374), B. diarrhea (n=225), AWD (S. Cholera) (n=208), Rabies/Dog bite (n=178), & Measles (n=127) at maximum.
- Khyber district reported ILI & SARI at maximum.
- District Abbottabad reported maximum cases of AD (Non-Cholera).
- District Charsadda reported maximum cases of Malaria, AD (Non-Cholera), ILI & SARI.
- District Haripur reported maximum cases of ILI, AD (Non-Cholera) & ALRI <5 years.
- District Kohat reported maximum cases of ILI, SARI, AD (Non Cholera), Malaria & ALRI <5 years.
- District Lakki Marwat reported maximum cases of Malaria, ALRI <5 years & AD (Non-Cholera).
- District Malakand reported maximum cases of ILI & AD (Non Cholera).
- District Swabi reported maximum cases of SARI, ILI, AD (Non Cholera) & ALRI <5 years.
- District Swat reported maximum cases of SARI, ILI, AD (Non Cholera), ALRI <5 years & Typhoid.
- Cases of VPDs have been reported, which need immediate public health actions to reduce their burden and further consequences.
- Cases of AFP need verification and further workup accordingly.
- Weekly cases of ILI, SARI & ALRI <5 years cases depicted a decline in trend as compared to the last week i.e. week 04.

Figure 6: Most frequently reported cases during week 5, in comparison with previous weeks, KP

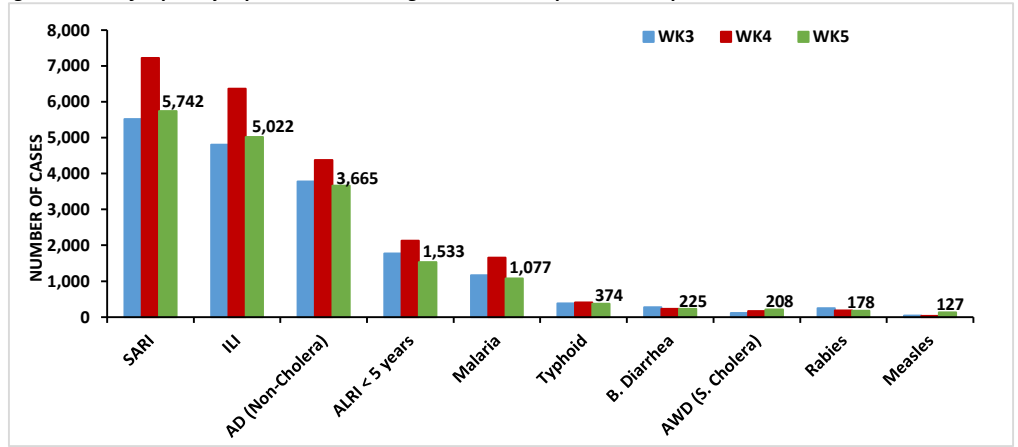
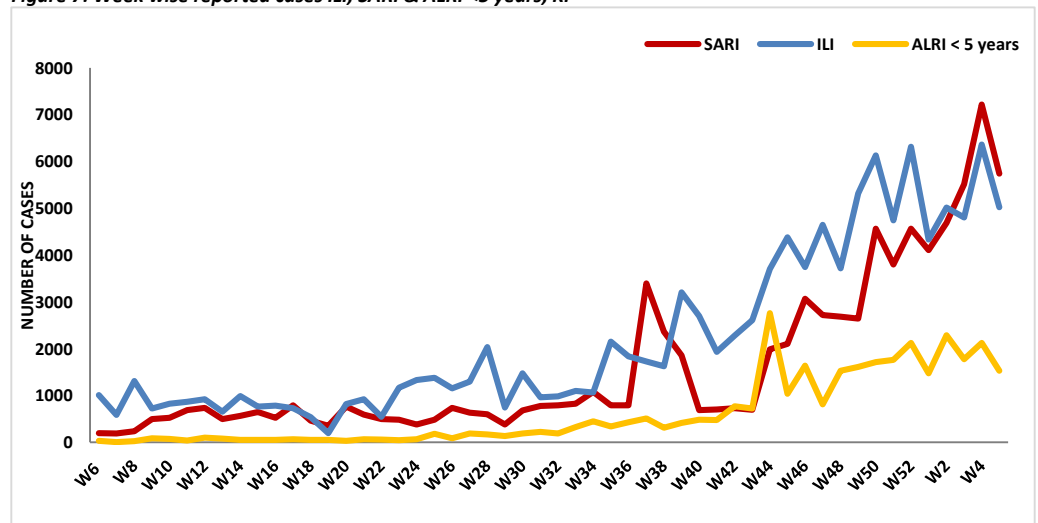


Table 4: District wise distribution of most frequently reported cases during week 5, KP

Diseases	Abbottabad	Charsadda	Haripur	Khyber	Kohat	Lakki Marwat	Malakand	Swabi	Swat
SARI	30	107	59	88	319	0	0	2,237	2,902
ILI	1	170	1,051	431	561	18	186	571	2,033
AD (Non-Cholera)	346	456	568	35	302	269	81	538	1,070
ALRI < 5 years	12	51	237	41	189	287	48	409	259
Malaria	0	591	21	13	53	318	23	13	45
Typhoid	8	55	44	26	20	28	0	32	161
B. Diarrhea	0	35	7	30	36	8	1	19	89
AWD (S. Cholera)	0	89	51	2	14	0	0	21	31
Rabies / Dog bite	0	0	0	12	6	55	0	66	39
Measles	0	96	7	9	1	8	0	5	1
VH (B, C & D)	0	0	0	1	23	55	0	13	1
AVH (A & E)	0	0	43	6	0	0	3	14	19
CL	0	0	0	22	16	26	8	2	0
Mumps	0	0	5	5	6	2	0	7	27
Chickenpox/ Varicella	0	0	5	6	0	0	2	19	0
Meningitis	0	0	3	0	0	0	0	4	0
Pertussis	0	0	0	5	0	0	0	2	0
AFP	0	0	3	0	0	1	0	1	1
Brucellosis	0	0	0	1	0	0	0	0	2

Figure 7: Week wise reported cases ILI, SARI & ALRI <5 years, KP



Islamabad (ICT)

- From ICT, the most frequent reported diseases were ILI (n=867), ALRI <5 years (n=309), AD (Non-Cholera) (n=173), SARI (n=15), B. diarrhea (n=08), Chickenpox (n=04), Measles (n=03), Typhoid (n=02) & Malaria (n=01).
- During this week, an increase in trend was observed for cases of ALRI <5 years, while a sharp fall in cases of ILI has been observed as compared to last week i.e. Week 04.

(Note: ICT started reporting data on new format; therefore, data before week-26 is not shown in trend graph).

Figure 8: Most frequently reported cases during week 5 in comparison with previous weeks, ICT

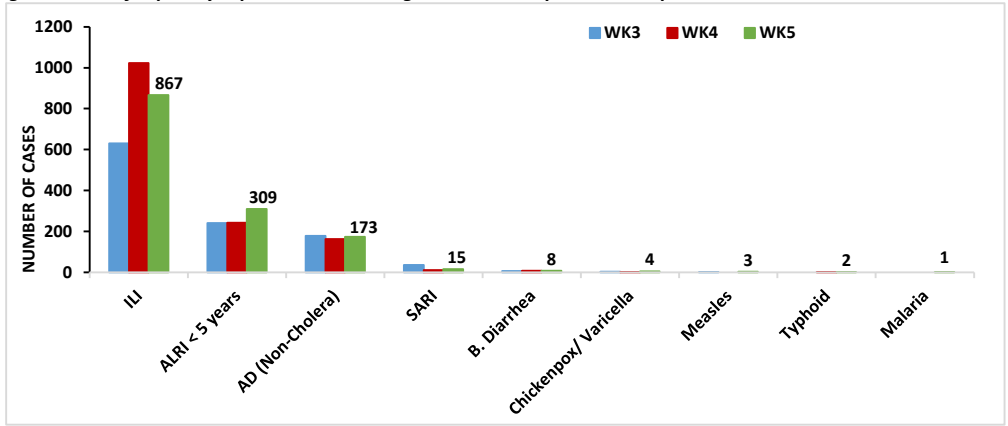


Figure 9: Week wise reported cases of ILI & ALRI <5 years, ICT

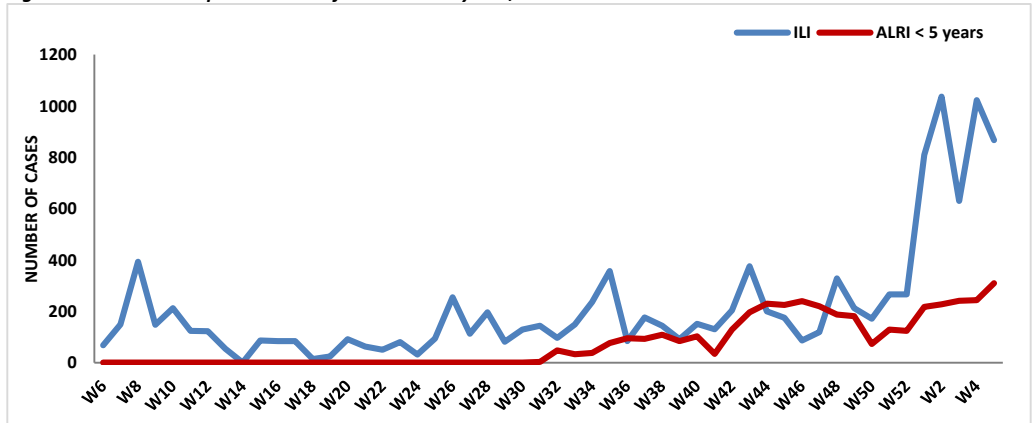


Figure 10: Most frequently reported cases during week 5, in comparison with previous weeks, GB

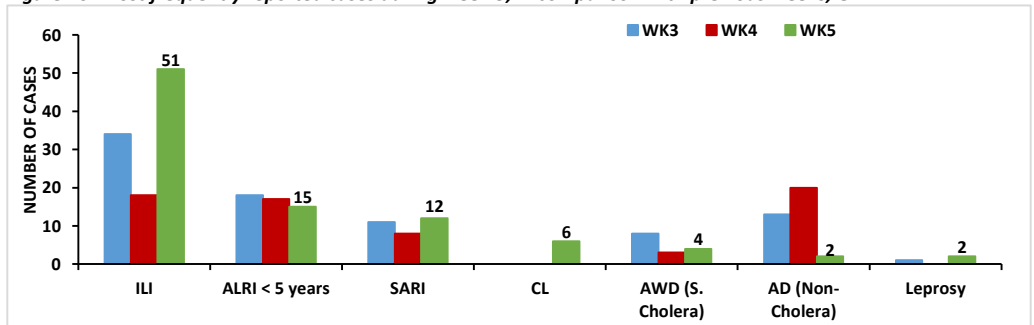
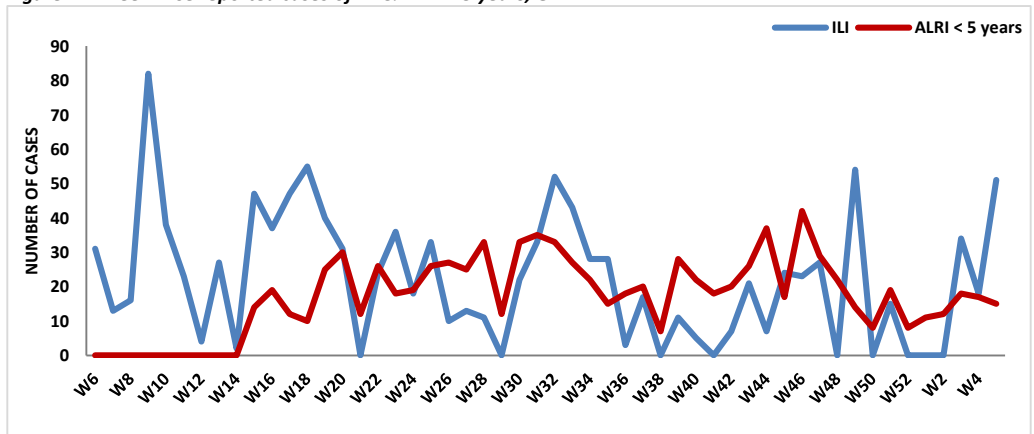


Figure 11: Week wise reported cases of ILI & ALRI <5 years, GB



Gilgit Baltistan

- Gilgit-Baltistan reported cases of ILI (n=51), ALRI <5 years (n=15), SARI (n=12), CL (n=06), AWD (S. Cholera) (n=04), AD (Non Cholera) (n=02), & Leprosy (n=02) this week.
- Weekly trend for cases of ILI depicted an abrupt rise, while cases of ALRI <5 years have shown a downward trend as compared to previous week i.e. Week-04.

(Note: GB started reporting data on new format, therefore, data before week-15 is not shown in trend graph)

AJK

- District Mirpur reported cases of ILI (n=72), AD (Non Cholera) (n=68), ALRI <5 years (n=31), SARI (n=05), B. diarrhea (n=02), Malaria (n=01) & Chickenpox (n=01) at maximum this week.
- Weekly trend of ILI & ALRI <5 years' cases have shown an abrupt decline as compared to last week.

Figure 12: Most frequently reported cases during week 5, in comparison with previous weeks, AJK

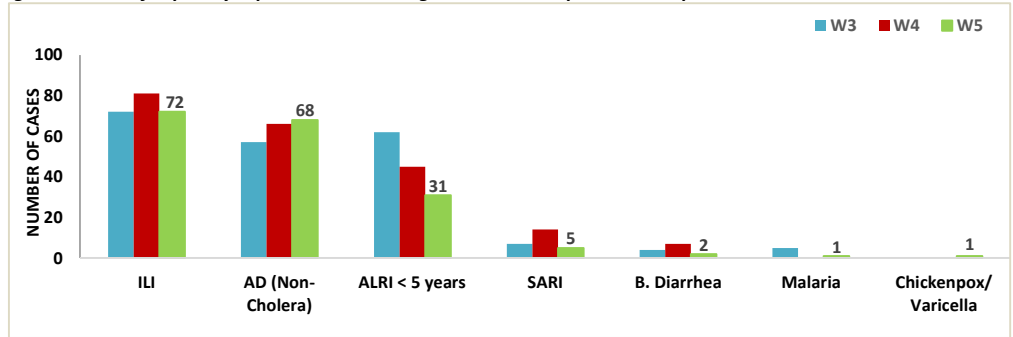
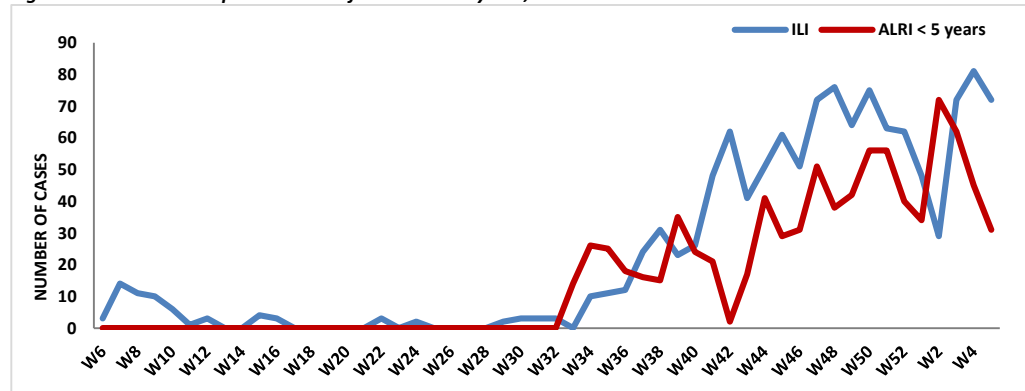


Figure 12: Week wise reported cases of ILI & ALRI <5 years, AJK



Punjab

- This week Punjab reported cases of ILI (n=395), AD (Non Cholera) (n=198), ALRI <5 years (n=177), Malaria (n=130), SARI (n=122), Typhoid (n=61), AWD (S. Cholera) (n=42), VH (B, C & D) (n=24), B. diarrhea (n=19), and Pertussis (n=14) at maximum.
- Cases of AWD (S. Cholera) & B. diarrhea have been reported which need immediate verification and public health response accordingly.
- It is proposed to enhance community awareness on water, sanitation and hygiene (WASH) practices
- There is a need to strengthen the routine to decrease burden of VPDs.

Figure 13: Most frequently reported cases during week 5, in comparison with previous weeks, Bahawalpur, Punjab

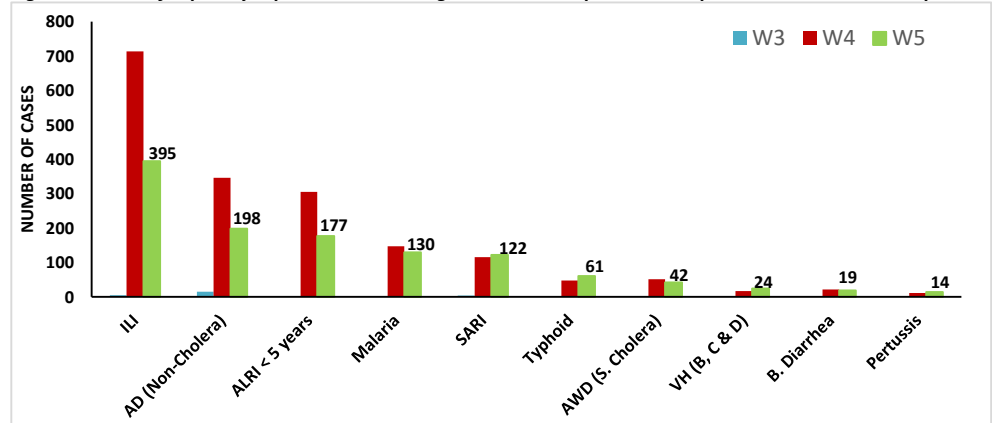
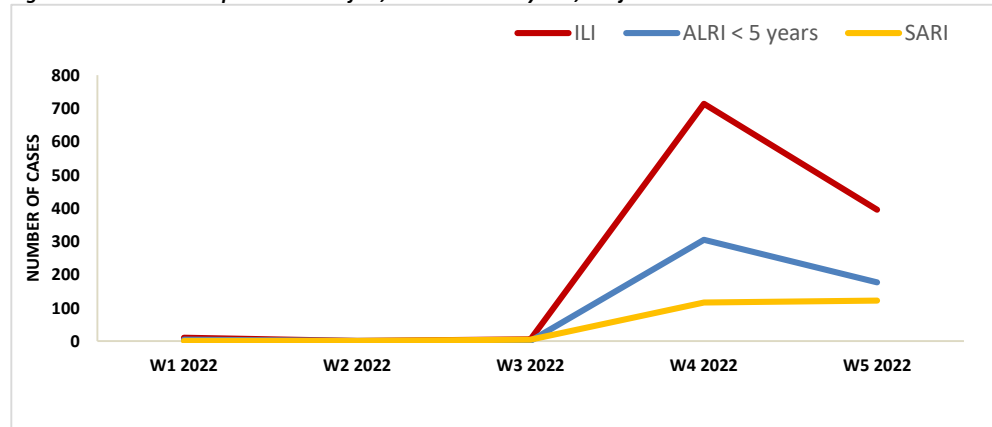


Figure 14: Week wise reported cases of ILI, SARI & ALRI <5 years, Punjab



IDSR Participating Districts

- This week 11% (04/36) of the districts reported hundred percent (%) data. Districts Kohat, Lakki Marwat, CDA (Islamabad) and Khuzdar reported 100% data.
- Districts Jaffarabad & Umerkot did not report data this week.

Table 5: IDSR reporting districts

Province	Districts	Total Number of Reporting Sites (ARS/Total)	Total Number of Sites that Reported (%)
Khyber Pakhtunkhwa	Haripur	69/69	59 (86%)
	Kohat	60/60	60 (100%)
	Abbottabad	110/110	93 (85%)
	Charsadda	61/61	48 (79%)
	Lakki Marwat	49/49	49 (100%)
	Swat	77/77	69 (90%)
	Malakand	78/78	06(7.7%)
	Swabi	63/63	60 (95%)
	Khyber	63/63	11 (18%)
Azad Jammu Kashmir	Mirpur	37/37	30 (81%)
Islamabad Capital Territory	ICT	18/18	16 (89%)
	CDA	9/12	9 (100%)
Balochistan	Gwadar	24/24	13(54%)
	Kech	44/78	42 (95%)
	Khuzdar	20/136	20(100%)
	Killa Abdullah	28/50	20 (71%)
	Lasbella	86/86	81(94%)
	Pishin	23/118	14 (61%)
	Quetta	22/77	13 (59%)
	Sibi	42/42	37 (88%)
	Zhob	37/37	19 (51%)
	Jaffarabad	47/47	0
	Naserabad	45/45	32 (71%)
	Gilgit Baltistan	Hunza	30/30
Nagar		05/22	04 (80%)
Sindh	Hyderabad	63/63	58 (92%)
	Karachi-East	14/14	12 (86%)
	Karachi-Malir	43/43	32 (74%)
	Ghotki	58/58	29 (50%)
	Umerkot	30/118	0
	Naushahro Feroze	52/52	17 (33%)
	Tharparkar	85/236	82 (96%)
	Shikarpur	32/32	14 (44%)
	Thatta	28/50	23 (82%)
	Larkana	149/149	38 (26%)
Punjab	Kamber	101/101	62 (61%)
	Bahawalpur	91/91	37 (41%)

*percentage = {Sites Reported data/Agreed Reporting Sites (ARS)}*100