



WEEKLY FIELD EPIDEMIOLOGY REPORT

Volume 3—Issue 34 Aug 15-21, 2021

Date: Aug 25, 2021

Provincial Technical Officers and fellows of FELTP assigned at the Disease Surveillance, Response Units (DSRU's) are working with provincial, and district health authorities on event based disease surveillance and outbreak response. DSRUs are sharing the disease surveillance data, outbreak reports and activities of FELTP fellows to the Federal Disease Surveillance and Response Unit (FDSRU) at the Field Epidemiology and Disease Surveillance Division (FEDSD) National Institute of Health (NIH) Islamabad on weekly basis.

COVID-19 Surveillance

PDSRUs in Provinces are working with the provincial department of health on COVID-19 surveillance, response and contact tracing since February, 2020 in Pakistan. FELTP fellows Alumni are actively involved in COVID-19 Surveillance throughout Pakistan. Data is being shared with FDSRU on daily basis and a SitRep is being issued by FEDSD National Institute of Health Islamabad. FDSRU has developed a mechanism for tracking of travelers from other countries to Pakistan since 02

February 2020. Daily flights data from international airports in Pakistan is being shared by the Central Health establishment (CHE) Islamabad with FDSRU teams who conduct daily calls on given contact numbers of the travelers to ask about their health status, advise them for immediate contact at the nearest designated hospital in case of COVID-19 symptoms. Total 150,133 travelers have been traced and contacted by Aug 21, 2021.

Table-1: Weekly Surveillance data COVID-19 by Aug 21, 2021

Province/ Region	Suspected cases reported	Lab Update		Hospital Update		
		Cumulative	Tests performed (Cumulative)	Tested positive cases (Cumulative)	Currently admitted	Discharged/Recovered Expired
AJK	267,155	267,155	30,597	95	25,502	678
Baluchistan	274,961	385,784	31,819	24	30,887	335
GB	165,981	168,178	9,617	64	8,746	170
Islamabad	1,849,797	1,849,797	96,030	392	89,703	851
KP	2,196,973	2,562,813	156,365	1,566	144,132	4,772
Punjab	6,529,760	6,598,758	379,574	2,360	344,850	11,527
Sindh	5,390,084	5,390,084	419,810	1,275	365,735	6,590
Total	16,674,711	17,222,569	1,123,812	5,776	1,009,555	24,923

PDSRU SINDH

Total 425,476 confirmed COVID-19 cases were reported from Sindh until Aug 21,2021. 370,271 cases have recovered while 6,766 cases expired due to COVID-19. Most of these cases were reported from District Karachi (n=278,190) followed by District Hyderabad (n=26,429), District Sukkur

(n=7,280) and District Ghotki (n=6,387). Age group ≥70 has the highest attack rate (2781/100,000) followed by 50-59 years age group (2208/100,000), 60-69 years age group (2077/100,000) & 30-39 years age group (1712/100,000 population).

Figure-1: Sindh - District-wise distribution of COVID-19 cases (Cumulative up to week 34)

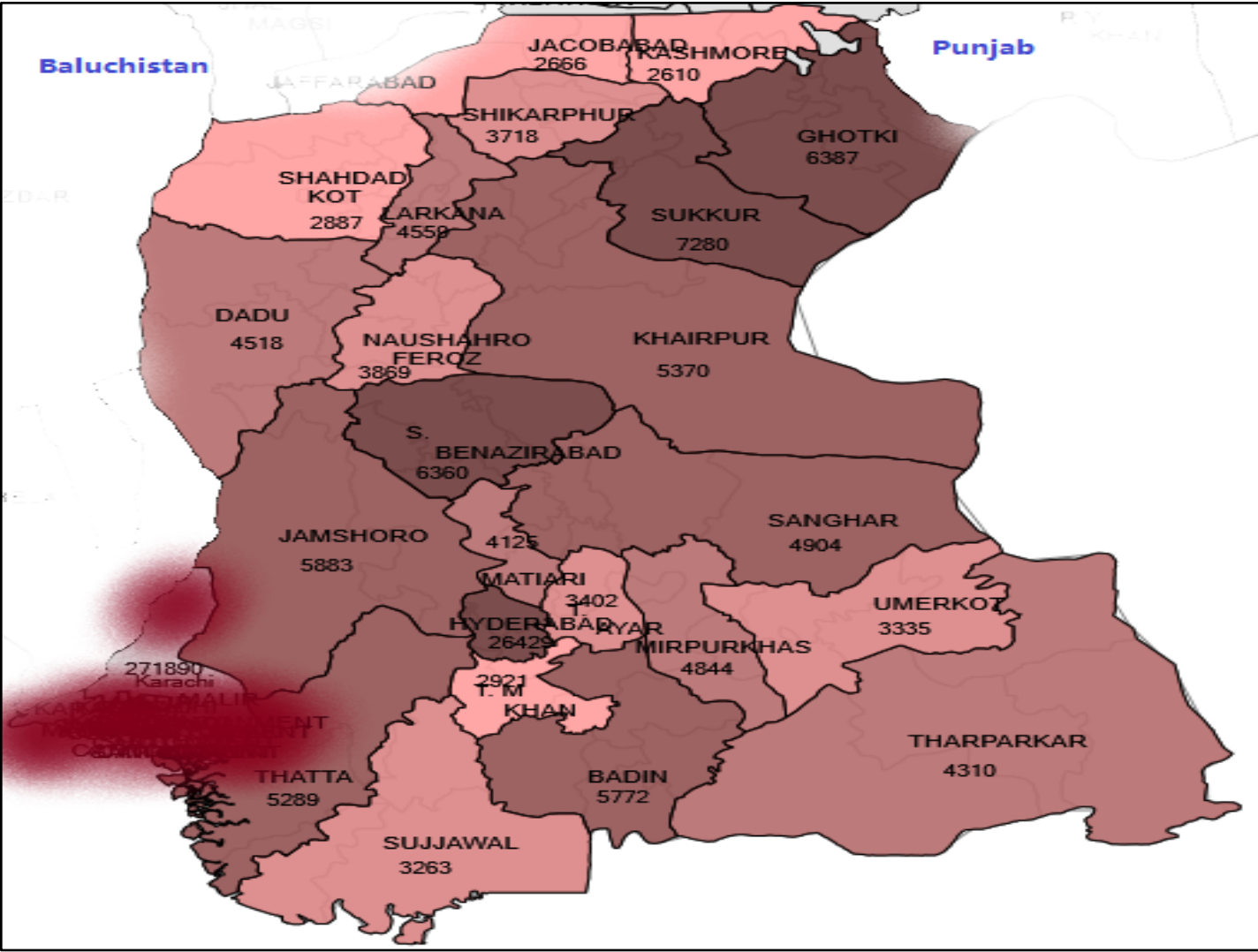
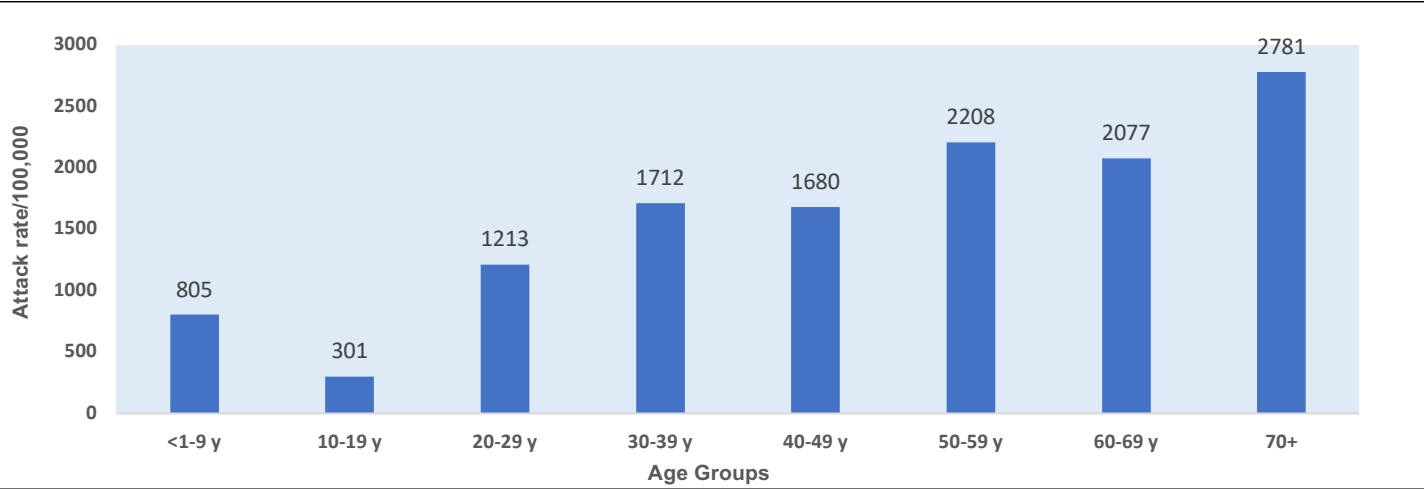


Figure-2: Sindh – Age group-wise Attack Rates /100,000 population (Aug 21, 2021)

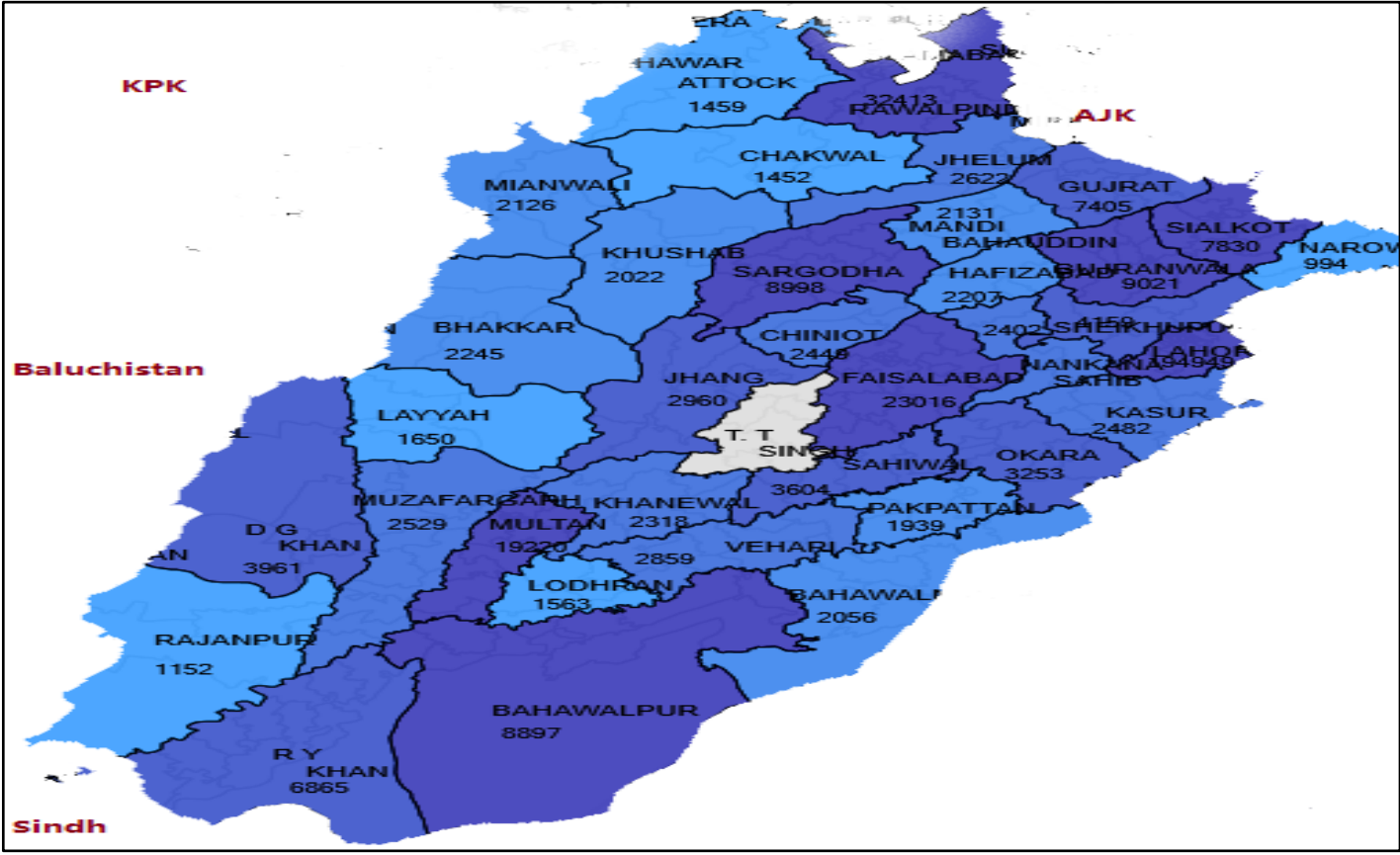


PDSRU Punjab

PDSRU Punjab has reported total 6,551,109 suspected cases of COVID-19 and out of these 380,845 were lab confirmed COVID-19 cases up to Aug 21, 2021. 344,847 cases have recovered and 11,557 cases expired due to COVID-19. District

Lahore has the highest number of confirmed cases (n=1,94,949) followed by District Rawalpindi (n=32,413), District Faisalabad (n=23,016), District Multan (n=19,220) and District Gujranwala (n=9,021) respectively.

Figure-3: Geographical Distribution of COVID-19 Cases in Punjab Province (Up to week 34)



PDSRU - Baluchistan province

The department of Health Baluchistan has reported 30,908 positive cases of COVID-19 and 335 deaths until Aug 21, 2021. 30,067 cases have recovered. District Quetta has the highest number of confirmed cases (n=19,932) followed by District Kech (n=2,267), District Khuzdar (n=1,170) and District

Lasbela (n=787). Age group 30-44 has the highest number of COVID-19 cases (n=9,660) followed by age group 15-29 (n=8,949) & age group 45-59 (n=5,164).

Figure-4: Geographical Distribution of COVID-19 Cases in Baluchistan Province (Cumulative up to Week 34)

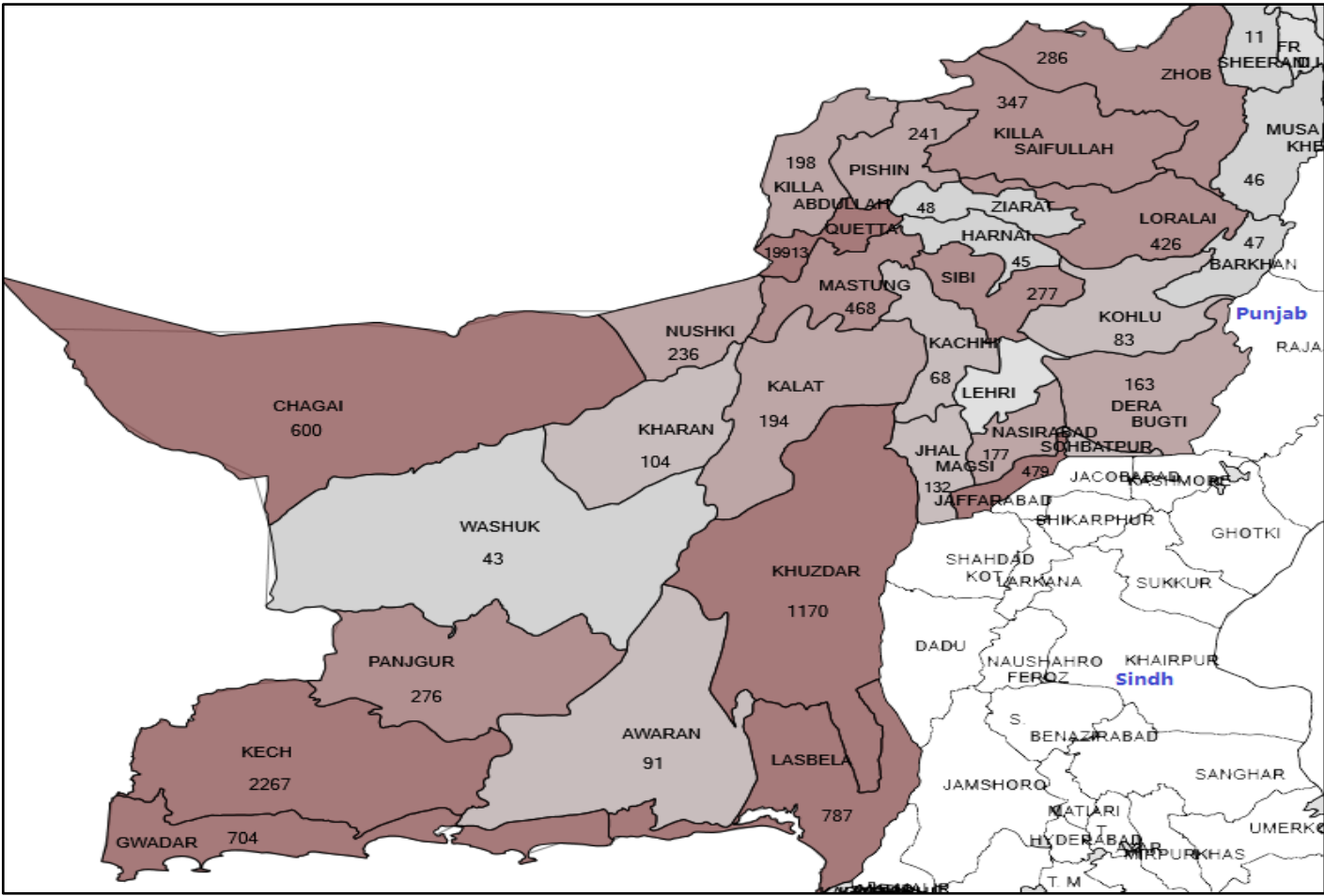
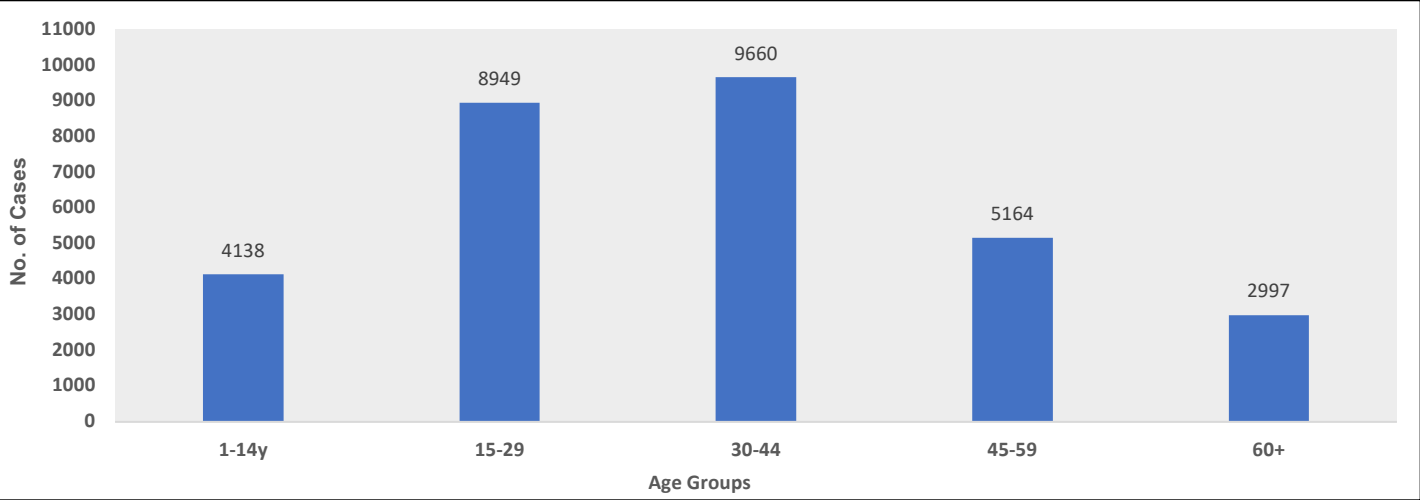


Figure-5: Baluchistan –Age group wise distribution of COVID-19 positive cases (up to Aug 21,2021)



PDSRU- Gilgit-Baltistan (GB)

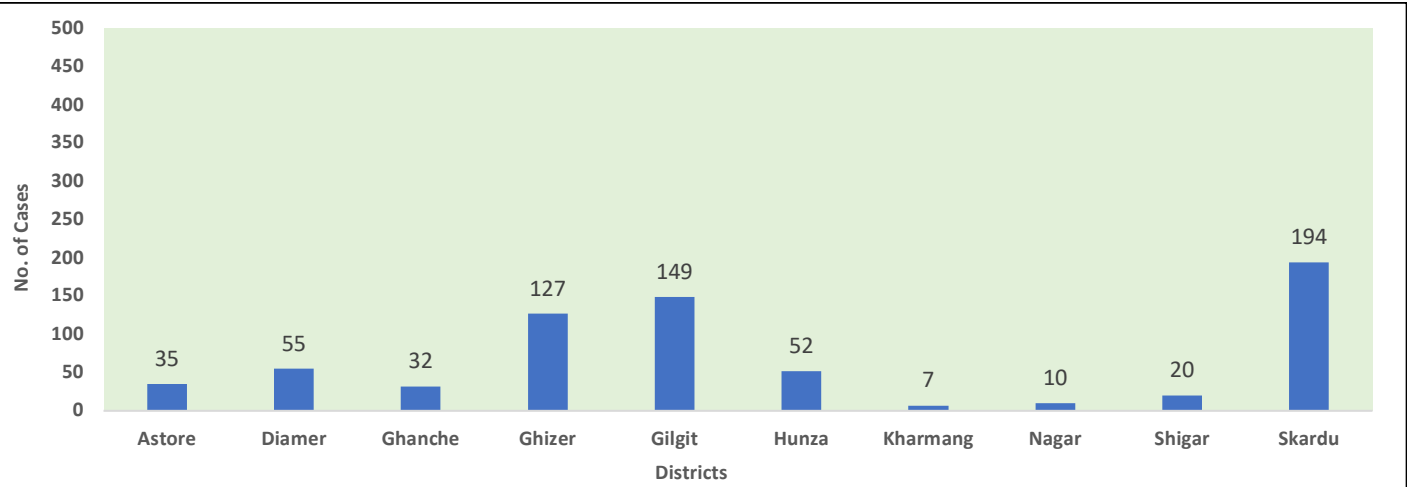
PDSRU GB has reported total 166,211 suspected cases of COVID-19 and out of these 12,633 were lab confirmed COVID-19 up to Aug 21,2021 and 681 cases were detected during last week, while no lab results are awaited. 143,776 suspects were declared

negative for COVID-19. 8,484 cases have recovered from COVID-19 while 170 cases expired. During current week highest number of COVID-19 cases were detected in District Skardu (n=194) followed by District Gilgit (n=149) and District Ghizer (n=127).

Table -2 Detail of number of samples, confirmed Covid-19 cases & Deaths in GB up to Aug 21,2021

District	Number of Suspects	Negative	Positive	Awaited	Recovered	Expired	Samples Discarded
Astore	17838	15896	35	00	516	05	60
Diamer	21471	19063	55	00	466	05	46
Ghanche	10053	9536	32	00	266	06	59
Ghizer	14620	13346	127	00	642	08	112
Gilgit	39036	34213	149	00	3419	78	189
Hunza	20087	12226	52	00	919	03	39
Kharmang	6502	6233	07	00	225	00	38
Nagar	7461	6690	10	00	255	05	30
Shigar	6177	5796	20	00	242	04	40
Skardu	22966	20777	194	00	1534	56	238
Grand Total	166211	143776	681	00	8484	170	851

Figure-6: GB-District-Wise distribution of confirmed COVID-19 cases, Aug 15-21,2021



PDSRU-AJK

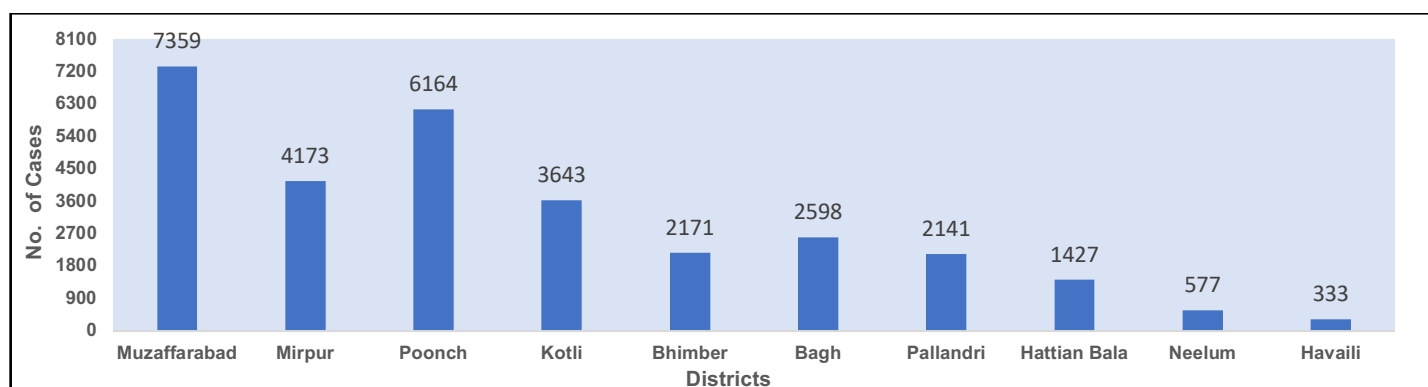
PDSRU AJK has reported total 268,576 suspected cases of COVID-19 and out of these 30,746 were lab confirmed COVID-19 up to Aug 21, 2021 while no lab-results of suspected cases are awaited. 25,881

cases have recovered from COVID-19 and 680 cases expired due to COVID-19. District Muzaffarabad has the highest number of cases (n=7,359) followed by District Poonch (n=6,164), District Mirpur (n=4,173) and District Kotli (n=3,643).

Table -3: Distribution of suspected and confirmed Covid-19 cases in AJK up to Aug 21,2021

Total Suspected Cases	Lab Tests Conducted	Lab Confirmed Cases	Active Cases	Recovered	Total Deaths
268,576	268,237	30,746	4,185	25,881	680

Figure-7: AJK-District-Wise distribution of confirmed COVID-19 cases up to Aug 21,2021



PDSRU-KPK

PDSRU KPK has reported total 2,196,973 suspected cases of COVID-19 and out of these 1,57,148 were lab confirmed COVID-19 up to Aug 21, 2021 while 4,797 patients expired. District Peshawar has the highest number of cases (n=57,745) followed by

District Mardan (n=9,993), District Swat (n=8,915) and District Nowshera (n=6,416). Age group 60-69 years has the highest attack rate/100,000 (AR=1106) followed by 40-49 years age group (AR=1017) and 50-59 years age group (AR=863).

Figure-8: Geographical Distribution of COVID-19 Cases in KPK Province (Cumulative up to Week 34)

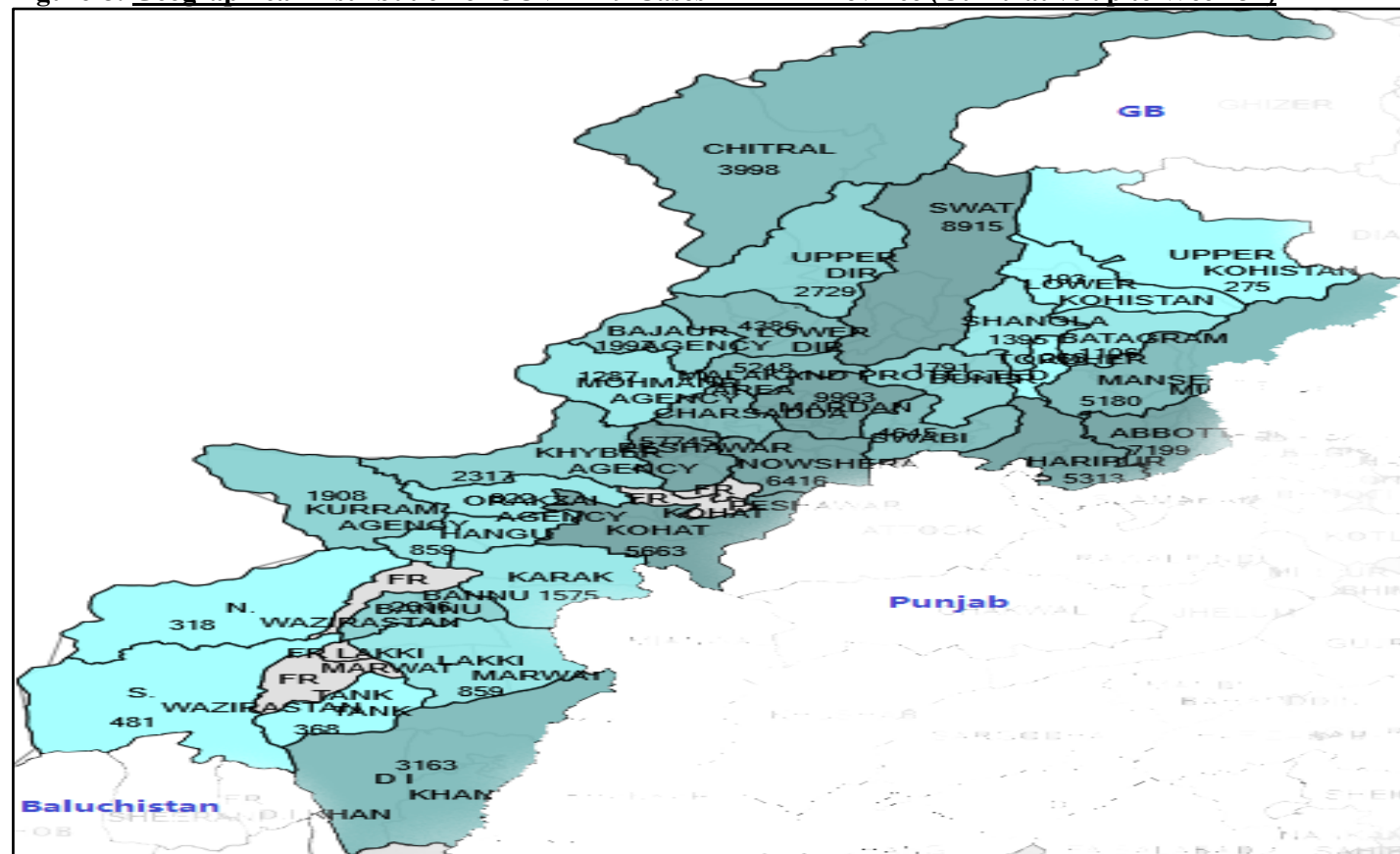
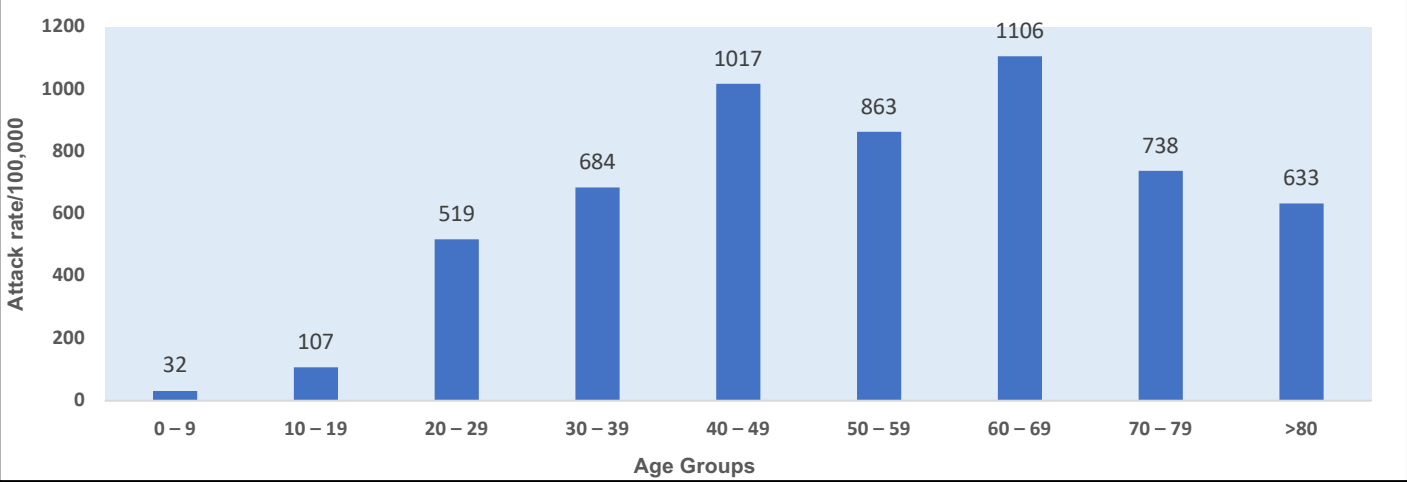


Figure-9: KPK –Attack rates /100,000 population in different age groups (up to Aug 21, 2021)



Communicable Disease Surveillance

Measles Surveillance:

In 2020, total **1986** confirmed Measles cases reported from all PDSRUs/RDSRUs. In week 34, 38 cases of measles were reported from KPK & Baluchistan.

Dengue Surveillance:

In 2018, total **3204** Dengue cases reported from Sindh. In 2019 total **24,610** cases reported which includes **48** new case reported from Baluchistan. In week 34, 160 cases were reported from Baluchistan & Sindh.

Diphtheria/Pertussis Surveillance:

During 2018 total **464** and during 2019 total **614**-suspected cases of diphtheria were reported. In week 34, no case of diphtheria was reported from any province or region.

CCHF Surveillance:

In 2018, total **63** CCHF (suspected and confirmed) cases were reported from DSRUs and **75** cases have been reported in 2019. During week 34, 03 new cases were reported from Baluchistan.

Table-4: Weekly and Cumulative Diseases Updates Aug 21, 2021

	Disease	Total Cases in 2020	Aug 15-21, 2021	Total Cases in 2021
1	CCHF	19	3	28
2	Varicella	235	0	0
3	Dengue	4024	160	2875
4	Chikungunya	0	0	0
5	Measles	1986	38	4027
6	Diphtheria/Pertussis	140	0	36
7	Suspected / confirmed Seasonal Influenza	9	0	0
8	NNT	150	0	28

Table 5: Dengue cases reported in 2017, 2018, month-wise distribution in 2019 & current week (All provinces and regions)

Month	KPK	Sindh	AJK	ICT	TDs - KP	Baluch	Punjab	Total
Jan–Dec 2017	18,857	2,884	6	120	406	86	579	22,938
Jan-Dec 2018	332	2088	1	0	175	69	539	3204
Jan-Dec 2019	5214	2937	506	2847	1484	2841	8826	24547
Jan-Dec 2020	3	2722	2	184	0	493	38	3,442
Total	24406	10631	515	3151	2065	3489	9982	54131
21/08/2021	0	99	0	0	0	61	0	160
Total (2021)	0	1488	0	0	24	1363	0	2875

Extensive drug Resistant (XDR) Typhoid Fever Surveillance in Sindh Province

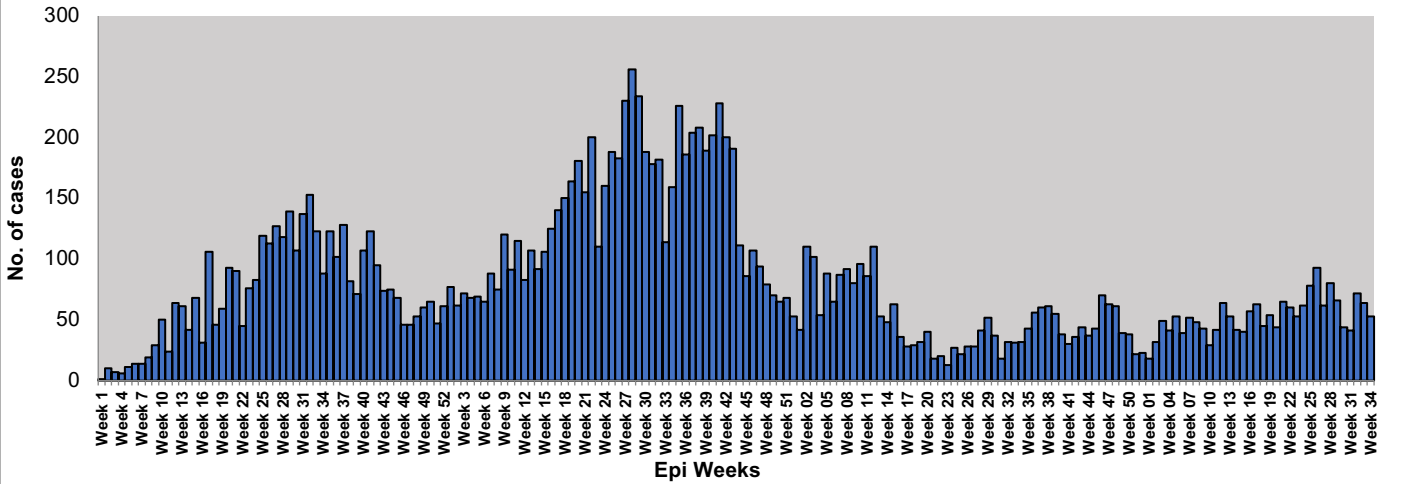
In Karachi total 15,277 cases of extensive drug resistance typhoid fever were reported from January 01, 2017 to Aug 21, 2021. During current week total 53 cases of XDR typhoid fever were reported from different hospitals in Karachi. The XDR Typhoid cases were reported mostly among the children and maximum number of XDR cases 6410 (42%) were reported in the age group 0-4 years. The overall attack rate was 76/100,000. The age group 0-4 years was the most affected (attack rate 235/100,000) followed by age group 5-9 years (attack rate 162/100,000). Females have higher attack rate 85/100,000 as compared to Males.

Table-6: Number of XDR Typhoid fever cases Karachi from January 1, 2017 to Aug 21, 2021

Year	Year	XDR Cases
Jan to December	2017	175
Jan to December	2018	3712
Jan to December	2019	7088
Jan to December	2020	2510
Till Aug 21, 2021	2021	1792

Total15,277

Figure 10: Week-wise number of XDR Typhoid fever cases in Karachi, from January 1, 2017 to Aug 21, 2021



XDR Typhoid Surveillance Data Sindh-Province (Excluding Karachi)

Total 7758 Salmonella Typhoid cases reported from November 2016 to Aug 21, 2021 from different districts of Sindh province (excluding Karachi). Among these cases 5926 were Extensive Drug Resistant cases. Out of these cases n=4116 (69.5%) were reported from District Hyderabad. The most affected age group was 0 to 4 years (n=1510) with attack rate 51.2/10000 population followed by 5-9 years of age group (n= 1138) with attack rate 38.8/10000 population. Over all attack rate is 18.8/10000 population (n=4116).

Table 7: Extensive drug Resistant (XDR) Typhoid Fever Surveillance Hyderabad and other districts

Year	Hyderabad	Other District	Total
2016	12	0	12
2017	485	4	489
2018	891	207	1098
2019	1645	998	2643
2020	708	415	1123
January 01 – Aug 14, 2021	360	175	540
Current week Aug 15-21, 2021	15	6	21
Total	4116	1805	5926

Figure 11:XDR Typhoid Cases District Hyderabad Nov-2016 to Aug 21, 2021

