



## **WEEKLY FIELD EPIDEMIOLOGY REPORT**

Volume 3—Issue 25 May Jun 13-19, 2021

Date: June 23, 2021

Provincial Technical Officers and fellows of FELTP assigned at the Disease Surveillance, Response Units (DSRU's) are working with provincial, and district health authorities on event based disease surveillance and outbreak response. DSRUs are sharing the disease surveillance data, outbreak reports and activities of FELTP fellows to the Federal Disease Surveillance and Response Unit (FDSRU) at the Field Epidemiology and Disease Surveillance Division (FEDSD) National Institute of Health (NIH) Islamabad on weekly basis.

### **COVID-19 Surveillance**

PDSRUs in Provinces are working with the provincial department of health on COVID-19 surveillance, response and contact tracing since February, 2020 in Pakistan. FELTP fellows Alumni are actively involved in COVID-19 Surveillance throughout Pakistan. Data is being shared with FDSRU on daily basis and a SitRep is being issued by FEDSD National Institute of Health Islamabad. FDSRU has developed a mechanism for tracking of travelers from other countries to Pakistan since 02

February 2020. Daily flights data from international airports in Pakistan is being shared by the Central Health establishment (CHE) Islamabad with FDSRU teams who conduct daily calls on given contact numbers of the travelers to ask about their health status, advise them for immediate contact at the nearest designated hospital in case of COVID-19 symptoms. Total 136,533 travelers have been traced and contacted by June 19, 2021.

**Table-1: Weekly Surveillance data COVID-19 by June 19, 2021**

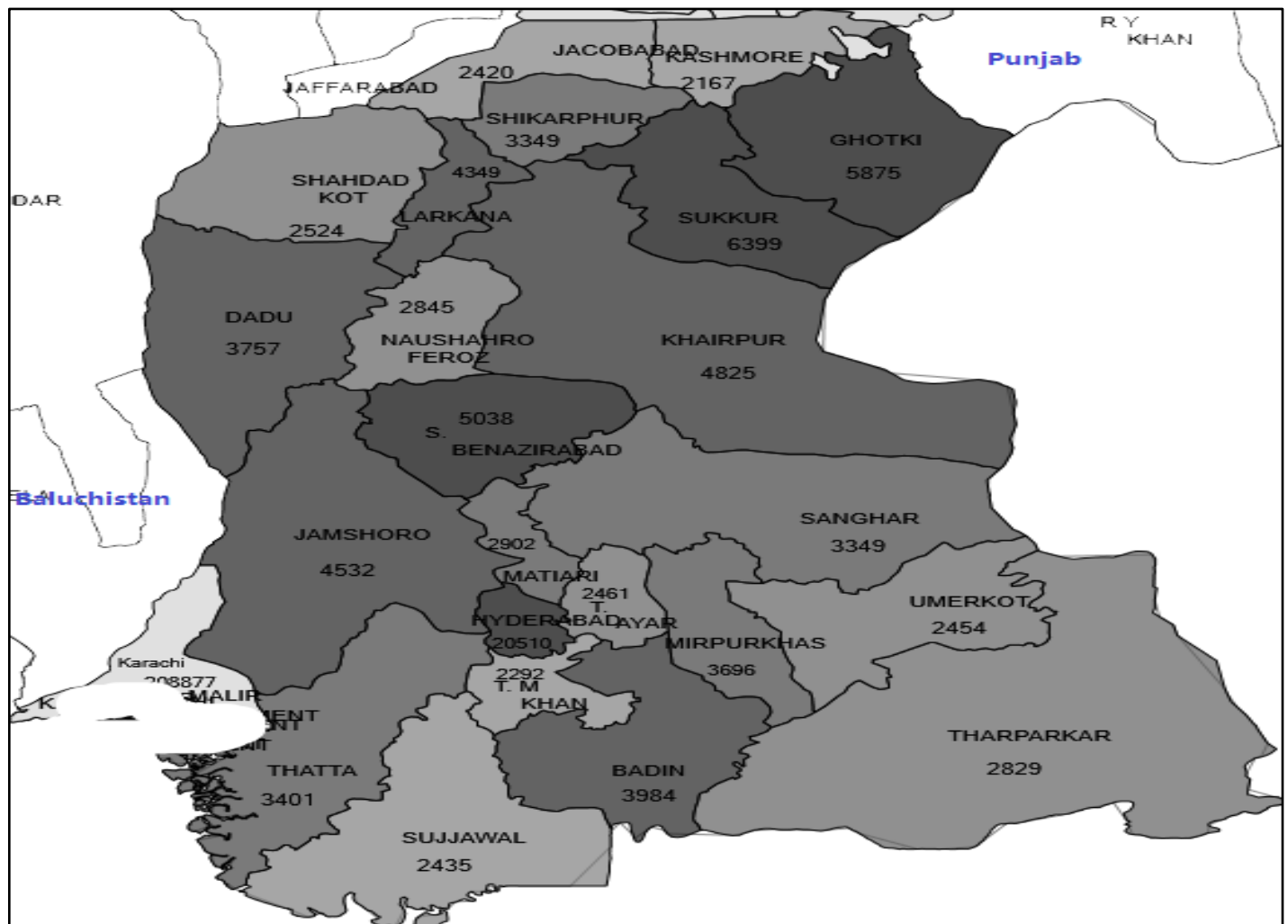
Province/ Region	Suspected cases reported		Lab Update		Hospital Update	
	Cumulative	Tests performed (Cumulative)	Tested positive cases (Cumulative)	Still admitted	Discharged/Recovered	Expired
<b>AJK</b>	208,061	208,061	19,934	34	18,905	571
<b>Baluchistan</b>	213,811	292,549	26,585	22	25,507	301
<b>GB</b>	126,319	128,039	5,803	22	5,566	108
<b>Islamabad</b>	1,654,099	1,654,099	82,344	131	80,399	775
<b>KP</b>	1,669,616	1,975,539	136,973	613	130,345	4,262
<b>Punjab</b>	5,434,906	5,478,938	344,970	1,137	324,530	10,633
<b>Sindh</b>	4,376,445	4,376,445	331,659	632	307,067	5,327
<b>Total</b>	<b>13,683,257</b>	<b>14,113,670</b>	<b>948,268</b>	<b>2,591</b>	<b>892,319</b>	<b>21,977</b>

### **PDSRU SINDH**

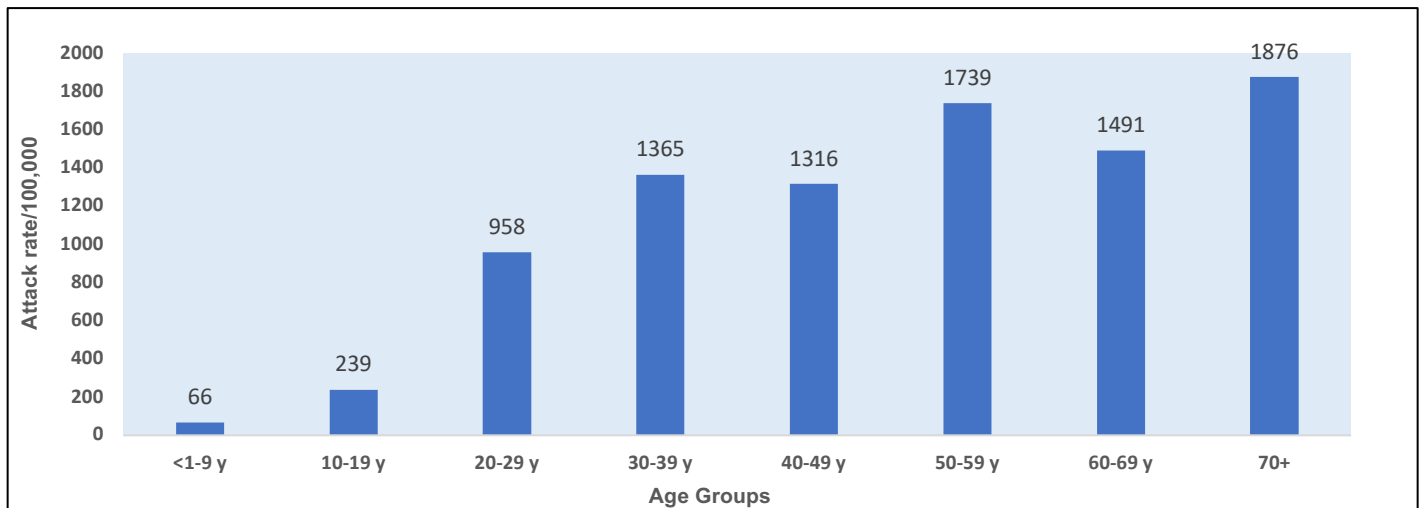
Total 332,237 confirmed COVID-19 cases were reported from Sindh until June 19,2021. 307,112 cases have recovered while 5,374 cases expired due to COVID-19. Most of these cases were reported from District Karachi (n=208,877) followed by District Hyderabad (n=20,510), District Sukkur

(n=6,399) and District Ghotki (n=5,875). Age group ≥70 has the highest attack rate (1876/100,000) followed by 50-59 years age group (1739/100,000), 60-69 years age group (1491/100,000) & 30-39 years age group (1365/100,000 population).

**Figure-1: Sindh - District-wise distribution of COVID-19 cases (Cumulative up to week 25)**



**Figure-2: Sindh – Age group-wise Attack Rates /100,000 population (June 19, 2021)**

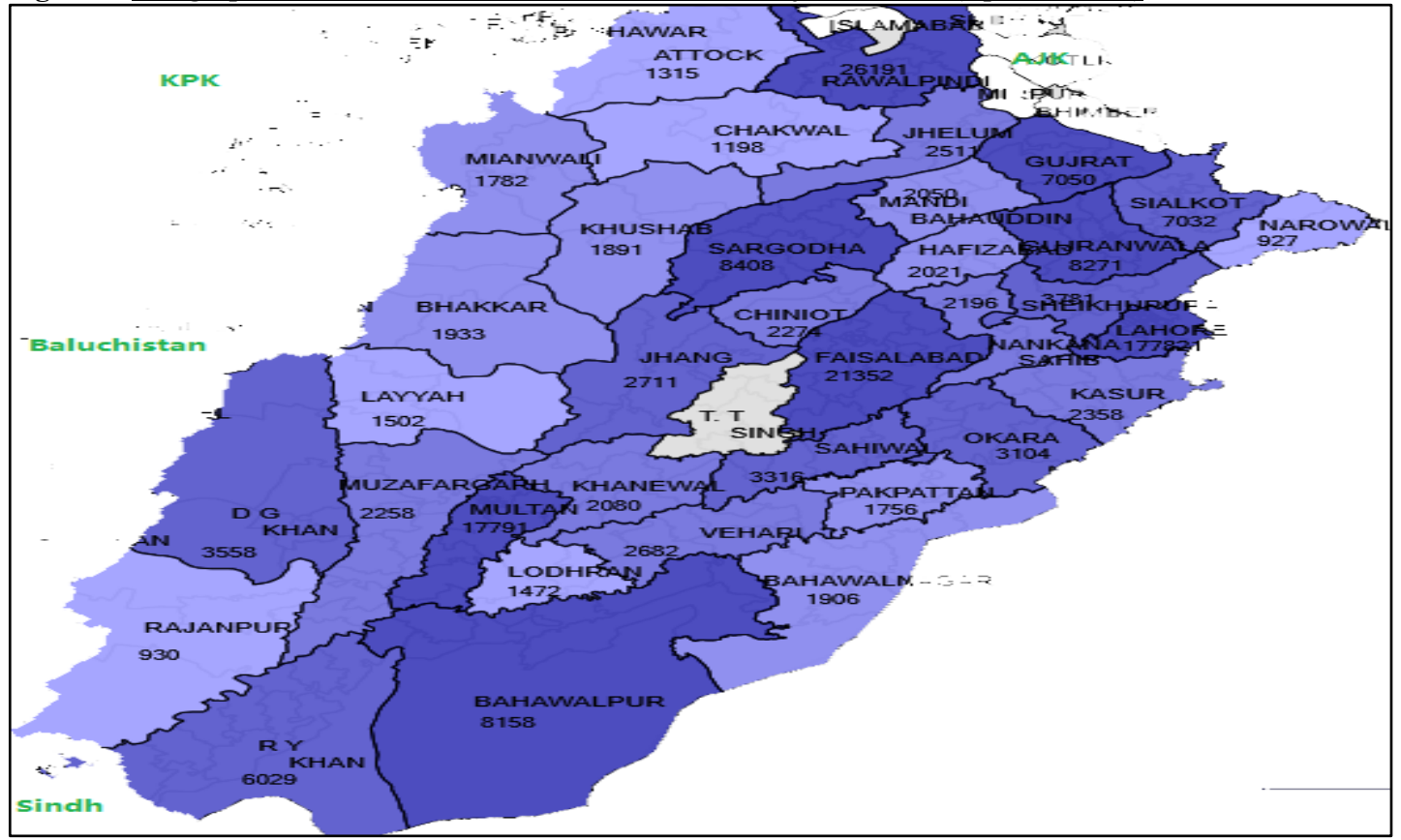


**PDSRU Punjab**

PDSRU Punjab has reported total 5,434,906 suspected cases of COVID-19 and out of these 344,970 were lab confirmed COVID-19 cases up to June 19, 2021. 324,530 cases have recovered and 10,633 cases expired due to COVID-19. District

Lahore has the highest number of confirmed cases (n=1,77,821) followed by District Rawalpindi (n=26,191), District Faisalabad (n=21,352), District Multan (n=17,791) and District Gujranwala (n=8,271) respectively.

**Figure-3: Geographical Distribution of COVID-19 Cases in Punjab Province (Up to week 25)**

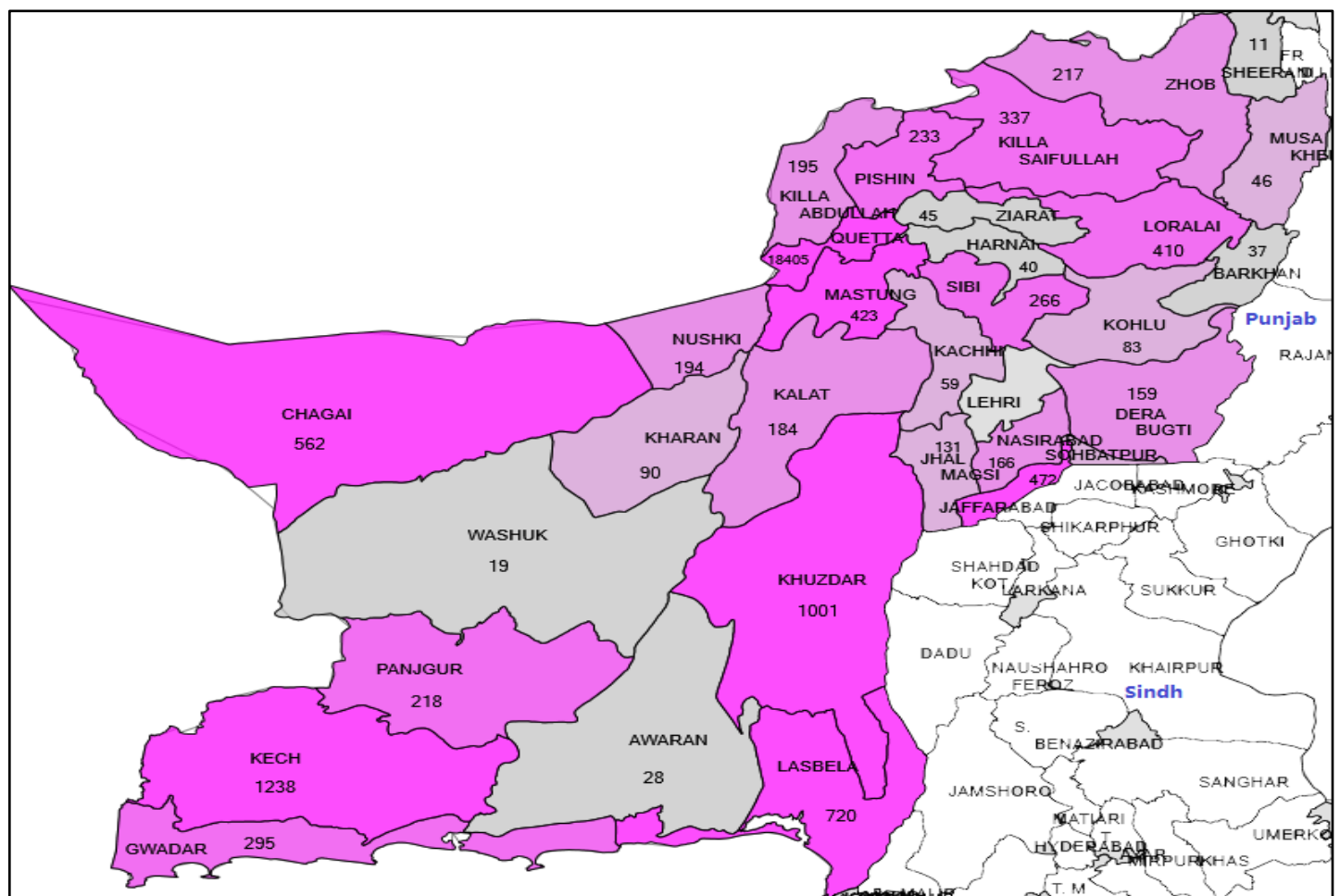


**PDSRU - Baluchistan province**

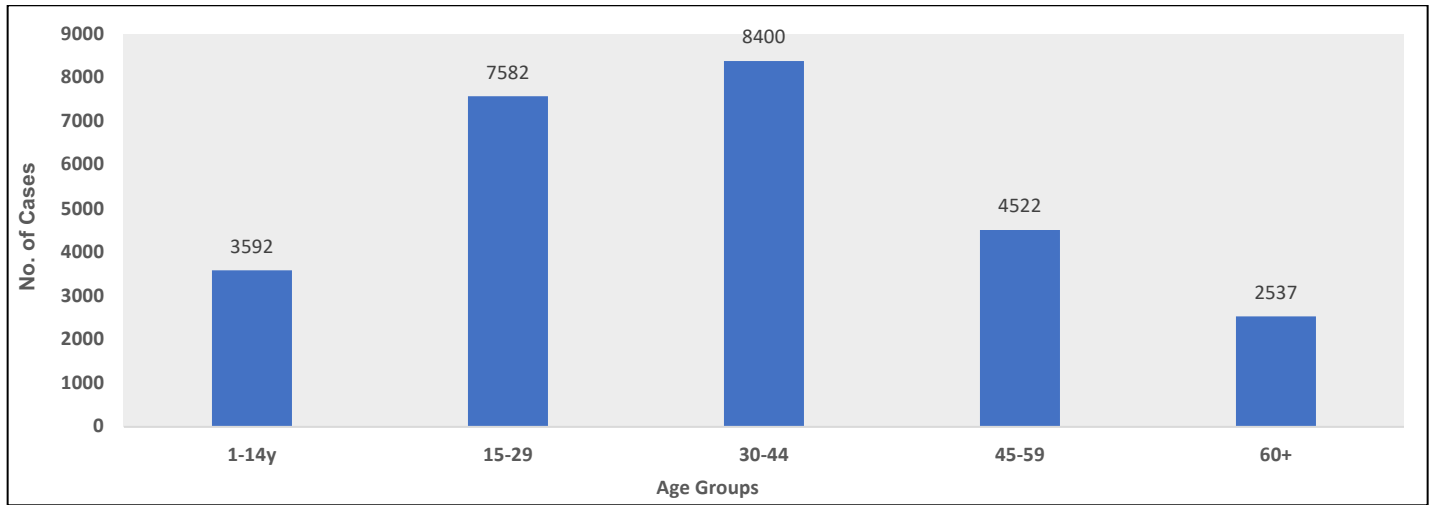
The department of Health Baluchistan has reported 26,633 positive cases of COVID-19 and 301 deaths until June 19, 2021. 25,579 cases have recovered. District Quetta has the highest number of confirmed cases (n=18,405) followed by District Kech

(n=1238), District Khuzdar (n=1001) and District Lasbela (n=720). Age group 30-44 has the highest number of COVID-19 cases (n=8,400) followed by age group 15-29 (n=7,582) & age group 45-59 (n=4,522).

**Figure-4: Geographical Distribution of COVID-19 Cases in Baluchistan Province (Cumulative up to Week 25)**



**Figure-5: Baluchistan –Age group wise distribution of COVID-19 positive cases (up to June 19,2021)**



**PDSRU- Gilgit-Baltistan (GB)**

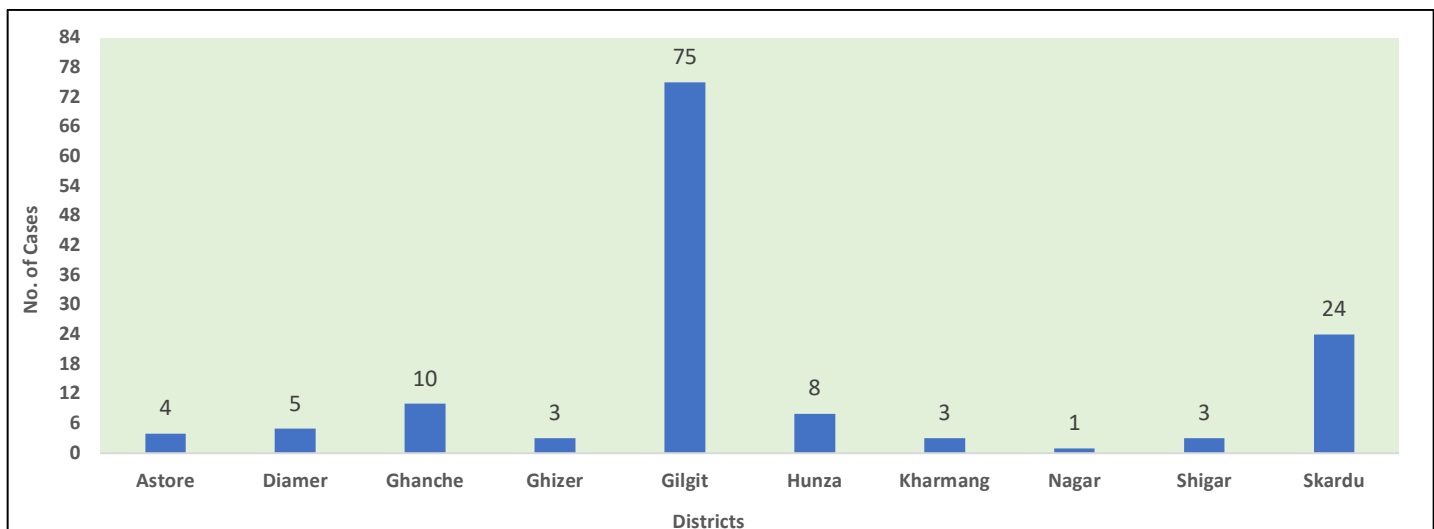
PDSRU GB has reported total 126,710 suspected cases of COVID-19 and out of these 7,209 were lab confirmed COVID-19 up to June 19,2021 and 136 cases were detected during last week, while no lab results are awaited. 126,364 samples were processed and 111,386 suspects were declared negative for

COVID-19. 5,347 cases have recovered from COVID-19 while 108 cases expired. During current week highest number of COVID-19 cases were detected in District Gilgit (n=75) followed by District Skardu (n=24) and District Ganche (n=10).

**Table -2 Detail of number of samples, confirmed Covid-19 cases & Deaths in GB up to June 19,2021**

District	Number of Suspects	Negative	Total Samples Processed	Positive	Awaited	Recovered	Expired	Samples Discarded
Astore	13896	13073	13888	04	00	409	05	08
Diamer	15972	14396	15971	05	00	315	05	01
Ghanche	8134	7668	8038	10	00	141	06	96
Ghizer	9223	8590	9221	03	00	445	07	02
Gilgit	29341	26486	29257	75	00	2093	40	84
Hunza	17135	10355	17118	08	00	651	03	17
Kharmang	5558	5381	5532	03	00	131	00	26
Nagar	6220	5676	6218	01	00	214	04	02
Shigar	5262	4943	5234	03	00	169	04	28
Skardu	15969	14818	15887	24	00	779	34	82
<b>Grand Total</b>	<b>126710</b>	<b>111386</b>	<b>126364</b>	<b>136</b>	<b>00</b>	<b>5347</b>	<b>108</b>	<b>346</b>

**Figure-6: GB-District-Wise distribution of confirmed COVID-19 cases, May June 13-19,2021**



**PDSRU-AJK**

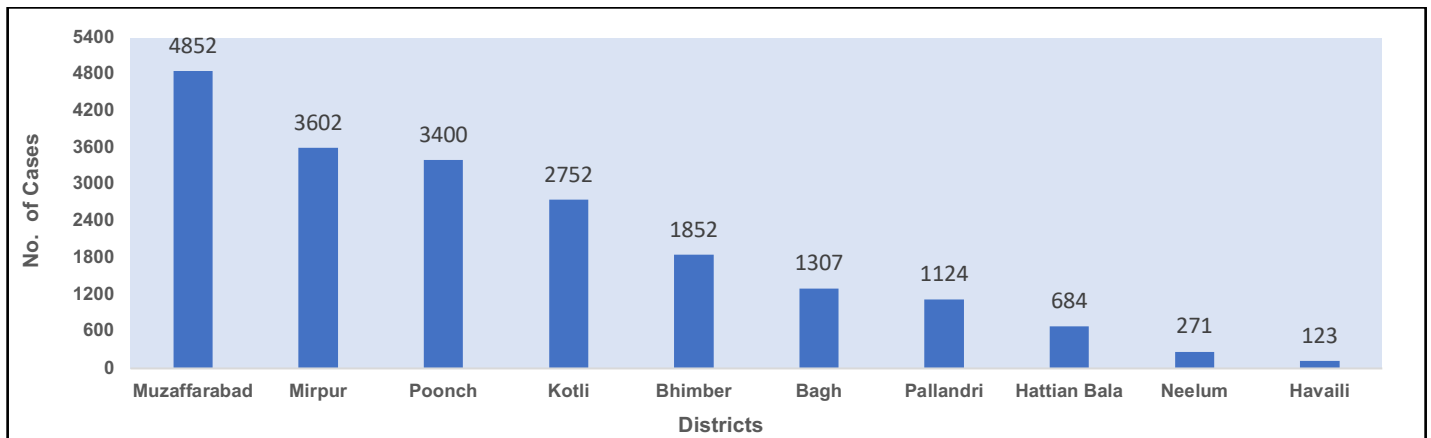
PDSRU AJK has reported total 208,235 suspected cases of COVID-19 and out of these 19,967 were lab confirmed COVID-19 up to June 19, 2021 while no lab-results of suspected cases are awaited. 18,936

cases have recovered from COVID-19 and 571 cases expired due to COVID-19. District Muzaffarabad has the highest number of cases (n=4,852) followed by District Mirpur (n=3,602), District Poonch (n=3,400) and District Kotli (n=2,752).

**Table -3: Distribution of suspected and confirmed Covid-19 cases in AJK up to June 19,2021**

Total Suspected Cases	Lab Tests Conducted	Lab Confirmed Cases	Active Cases	Recovered	Total Deaths
208,235	208,536	19,967	460	18,936	571

**Figure-7: AJK-District-Wise distribution of confirmed COVID-19 cases up to June 19,2021**

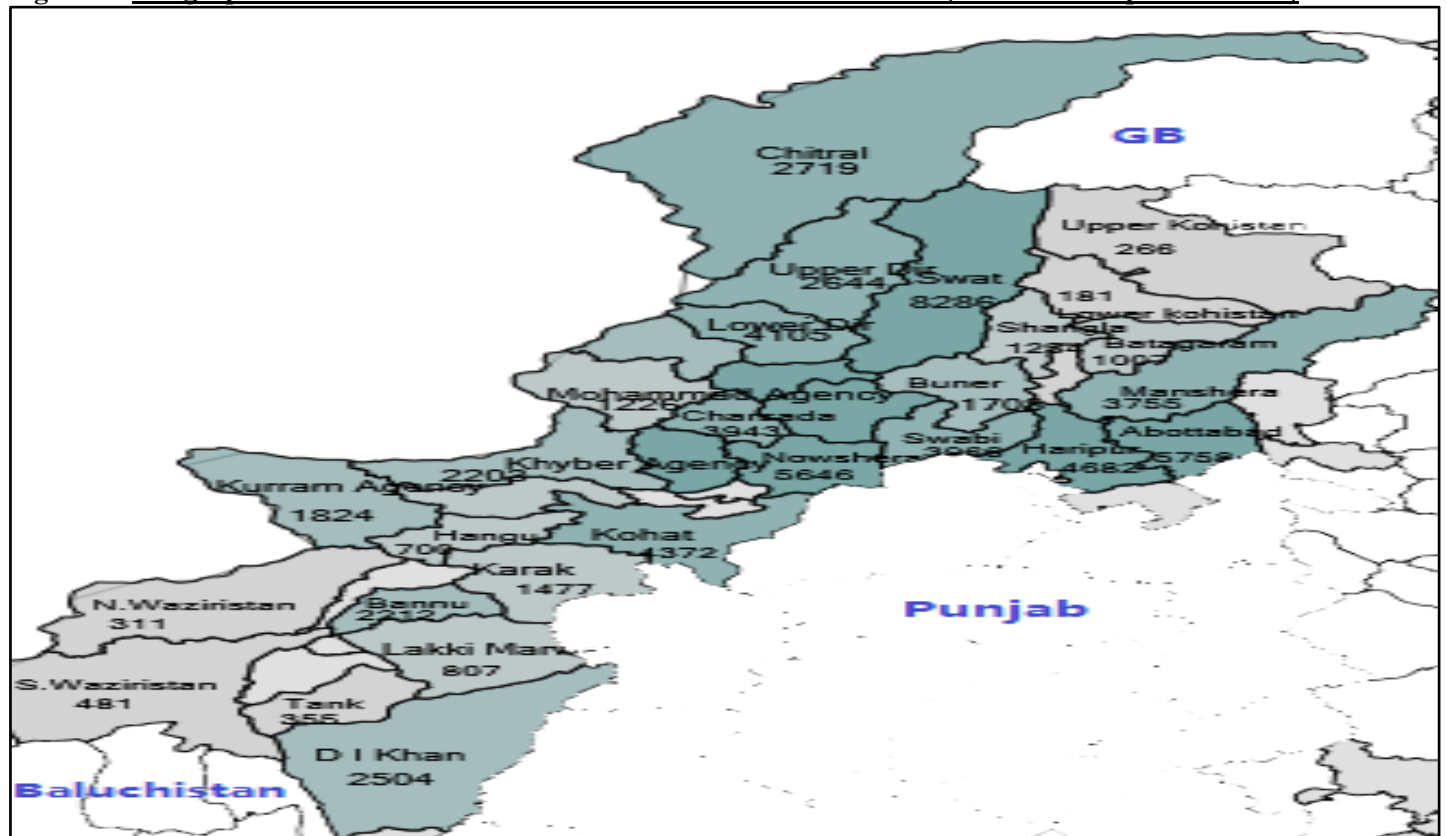


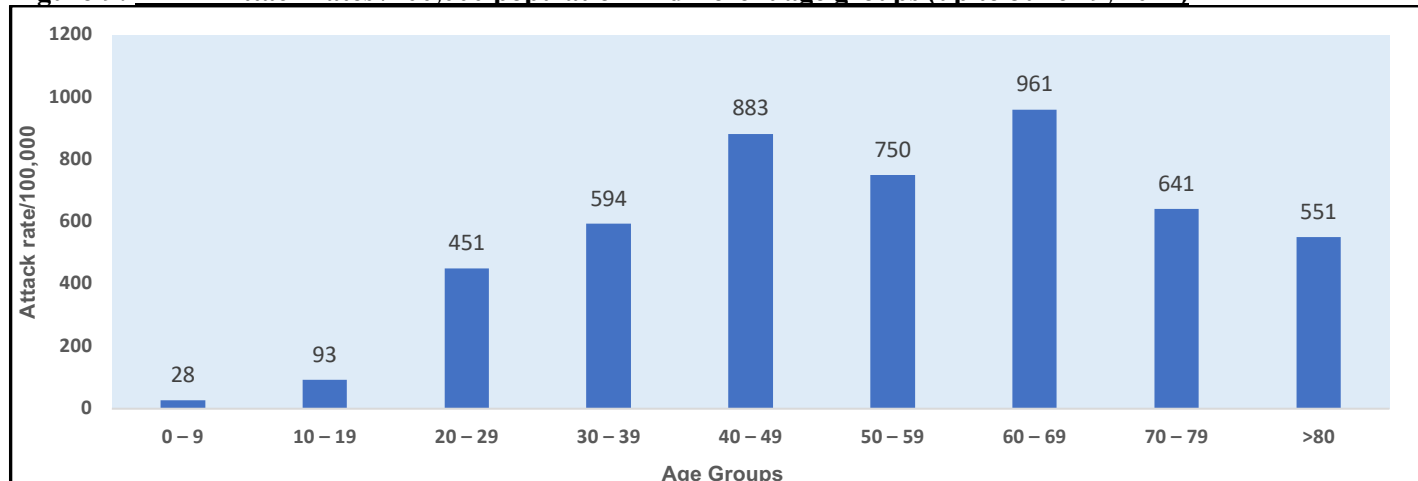
**PDSRU-KPK**

PDSRU KPK has reported total 1,669,616 suspected cases of COVID-19 and out of these 1,37,075 were lab confirmed COVID-19 up to June 19, 2021 while 4,269 patients expired. District Peshawar has the highest number of cases (n=50,035) followed by

District Mardan (n=8,899), District Swat (n=8,286) and District Nowshera (n=5,646). Age group 60-69 years has the highest attack rate/100,000 (AR=961) followed by 40-49 years age group (AR=883) and 50-59 years age group (AR=750).

**Figure-8: Geographical Distribution of COVID-19 Cases in KPK Province (Cumulative up to Week 25)**



**Figure-9: KPK –Attack rates /100,000 population in different age groups (up to June 19, 2021)**

### Communicable Disease Surveillance

#### **Measles Surveillance:**

In 2020, total **1986** confirmed Measles cases reported from all PDSRUs/RDSRUs. In week 25, 146 cases of measles were reported from KPK & Baluchistan.

#### **Dengue Surveillance:**

In 2018, total **3204** Dengue cases reported from Sindh. In 2019 total **24,610** cases reported which includes **48** new case reported from Baluchistan. In week 25, 102 cases were reported from Sindh & Baluchistan.

#### **Diphtheria/Pertussis Surveillance:**

During 2018 total **464** and during 2019 total **614**-suspected cases of Diphtheria were reported. In week 25, no cases of diphtheria/pertussis was reported.

#### **CCHF Surveillance:**

In 2018, total **63** CCHF (suspected and confirmed) cases were reported from DSRUs and **75** cases have been reported in 2019. During week 25, no case was reported from any province or region.

**Table-4: Weekly and Cumulative Diseases Updates June 19, 2021**

	Disease	Total Cases in 2020	June 13-19, 2021	Total Cases in 2021
1	CCHF	19	0	4
2	Varicella	235	0	0
3	Dengue	4024	102	1807
4	Chikungunya	0	0	0
5	Measles	1986	146	3058
6	Diphtheria/Pertussis	140	0	34
7	Suspected / confirmed Seasonal Influenza	9	0	0
8	NNT	150	0	24

**Table 5: Dengue cases reported in 2017, 2018, month-wise distribution in 2019 & current week (All provinces and regions)**

Month	KPK	Sindh	AJK	ICT	TDs - KP	Baluch	Punjab	Total
Jan-Dec 2017	18,857	2,884	6	120	406	86	579	22,938
Jan-Dec 2018	332	2088	1	0	175	69	539	3204
Jan-Dec 2019	5214	2937	506	2847	1484	2841	8826	24547
Jan-Dec 2020	3	2722	2	184	0	493	38	3,442
Total	24406	10631	515	3151	2065	3489	9982	54131
19/06/2021	0	97	0	0	0	5	0	102
Total (2021)	0	1023	0	0	0	784	0	1807

**Extensive drug Resistant (XDR) Typhoid Fever Surveillance in Sindh Province**

In Karachi total 14,480 cases of extensive drug resistance typhoid fever were reported from January 01, 2017 to June 19, 2021. During current week total 63 cases of XDR typhoid fever were reported from different hospitals in Karachi. The XDR Typhoid cases were reported mostly among the children and maximum number of XDR cases 6124 (41%) were

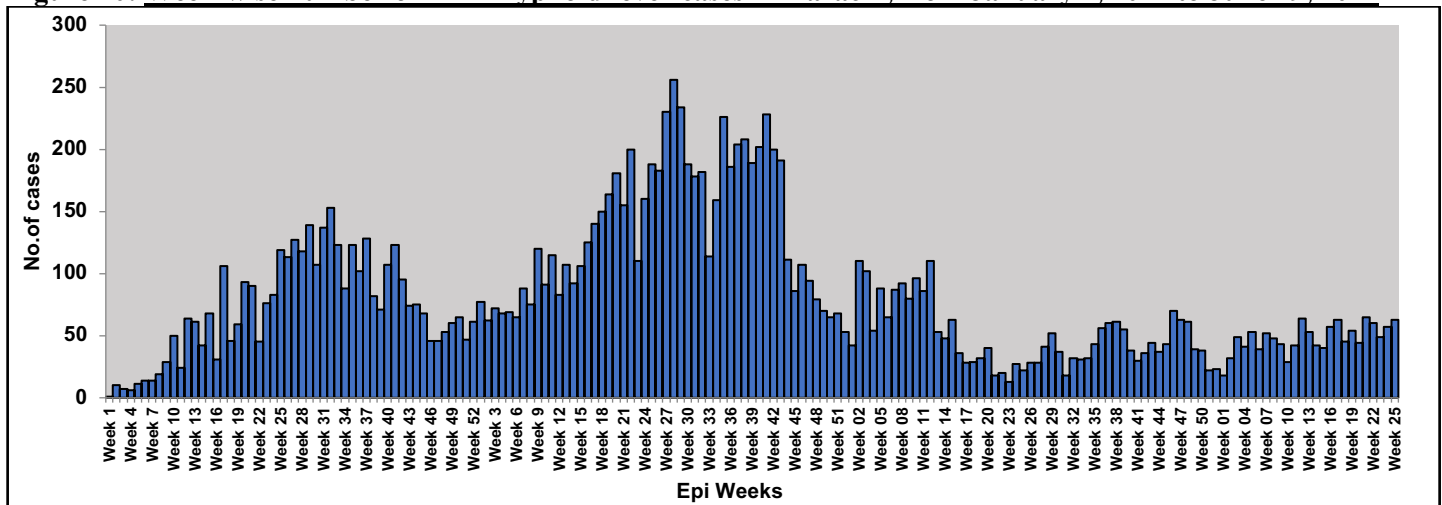
reported in the age group 0-4 years. The overall attack rate was 73/100,000. The age group 0-4 years was the most affected (attack rate 225/100,000) followed by age group 5-9 years (attack rate 157/100,000). Females have higher attack rate 82/100,000 as compared to Males.

**Table-6: Number of XDR Typhoid fever cases Karachi from January 1, 2017 to June 19, 2021**

Year	Year	XDR Cases
Jan to December	2017	175
Jan to December	2018	3712
Jan to December	2019	7088
Jan to December	2020	2510
Till June 19, 2021	2021	995

**Total** **14,480**

**Figure 10: Week-wise number of XDR Typhoid fever cases in Karachi, from January 1, 2017 to June 19, 2021**



**XDR Typhoid Surveillance Data Sindh-Province (Excluding Karachi)**

Total 7567 Salmonella Typhoid cases reported from November 2016 to June 19, 2021 from different districts of Sindh province (excluding Karachi). Among these cases 5774 were Extensive Drug Resistant cases. Out of these cases n=4010 (69.5%) were reported from District Hyderabad. The most

affected age group was 0 to 4 years (n=1480) with attack rate 50.1/10000 population followed by 5-9 years of age group (n= 1113) with attack rate 38.0/10000 population. Over all attack rate is 18.3/10000 population (n=4010).

**Table 7: Extensive drug Resistant (XDR) Typhoid Fever Surveillance Hyderabad and other districts**

Year	Hyderabad	Other District	Total
2016	12	0	12
2017	485	4	489
2018	891	207	1098
2019	1645	998	2643
2020	708	415	1123
January 01 – June 12, 2021	259	129	393
Current week Jun 13-19, 2021	10	6	16
<b>Total</b>	<b>4010</b>	<b>1759</b>	<b>5774</b>

**Figure 11: XDR Typhoid Cases District Hyderabad Nov-2016 to June 19, 2021**

