



WEEKLY FIELD EPIDEMIOLOGY REPORT

Volume 3—Issue 23. May 30-Jun 05, 2021

Date: June 09, 2021

Provincial Technical Officers and fellows of FELTP assigned at the Disease Surveillance, Response Units (DSRU's) are working with provincial, and district health authorities on event based disease surveillance and outbreak response. DSRUs are sharing the disease surveillance data, outbreak reports and activities of FELTP fellows to the Federal Disease Surveillance and Response Unit (FDSRU) at the Field Epidemiology and Disease Surveillance Division (FEDSD) National Institute of Health (NIH) Islamabad on weekly basis.

COVID-19 Surveillance

PDSRUs in Provinces are working with the provincial department of health on COVID-19 surveillance, response and contact tracing since February, 2020 in Pakistan. FELTP fellows Alumni are actively involved in COVID-19 Surveillance throughout Pakistan. Data is being shared with FDSRU on daily basis and a SitRep is being issued by FEDSD National Institute of Health Islamabad. FDSRU has developed a mechanism for tracking of travelers from other countries to Pakistan since 02

February 2020. Daily flights data from international airports in Pakistan is being shared by the Central Health establishment (CHE) Islamabad with FDSRU teams who conduct daily calls on given contact numbers of the travelers to ask about their health status, advise them for immediate contact at the nearest designated hospital in case of COVID-19 symptoms. Total 133,431 travelers have been traced and contacted by June 05, 2021.

Table-1: Weekly Surveillance data COVID-19 by June 05, 2021

Province/ Region	Suspected cases reported	Lab Update		Hospital Update		
		Cumulative	Tests performed (Cumulative)	Tested positive cases (Cumulative)	Still admitted	Discharged/Recovered Expired
AJK	201,138	201,138	19,493	36	18,209	554
Baluchistan	204,500	278,537	25,729	26	24,303	289
GB	121,332	123,050	5,633	13	5,419	107
Islamabad	1,606,006	1,606,006	81,700	194	77,874	765
KP	1,538,516	1,846,994	134,321	745	125,859	4,144
Punjab	5,230,375	5,276,594	342,192	1,619	317,190	10,290
Sindh	4,191,280	4,191,280	323,072	941	294,257	5,116
Total	13,093,147	13,523,599	932,140	3,574	863,111	21,265

PDSRU SINDH

Total 325,415 confirmed COVID-19 cases were reported from Sindh until June 05, 2021. 296,609 cases have recovered while 5,216 cases expired due to COVID-19. Most of these cases were reported from District Karachi (n=205,715) followed by District Hyderabad (n=20,067), District Sukkur

(n=6,340) and District Ghotki (n=5,861). Age group ≥ 70 has the highest attack rate (1837/100,000) followed by 50-59 years age group (1703/100,000), 60-69 years age group (1461/100,000) & 30-39 years age group (1337/100,000 population).

Figure-1: Sindh - District-wise distribution of COVID-19 cases (Cumulative up to week 23)

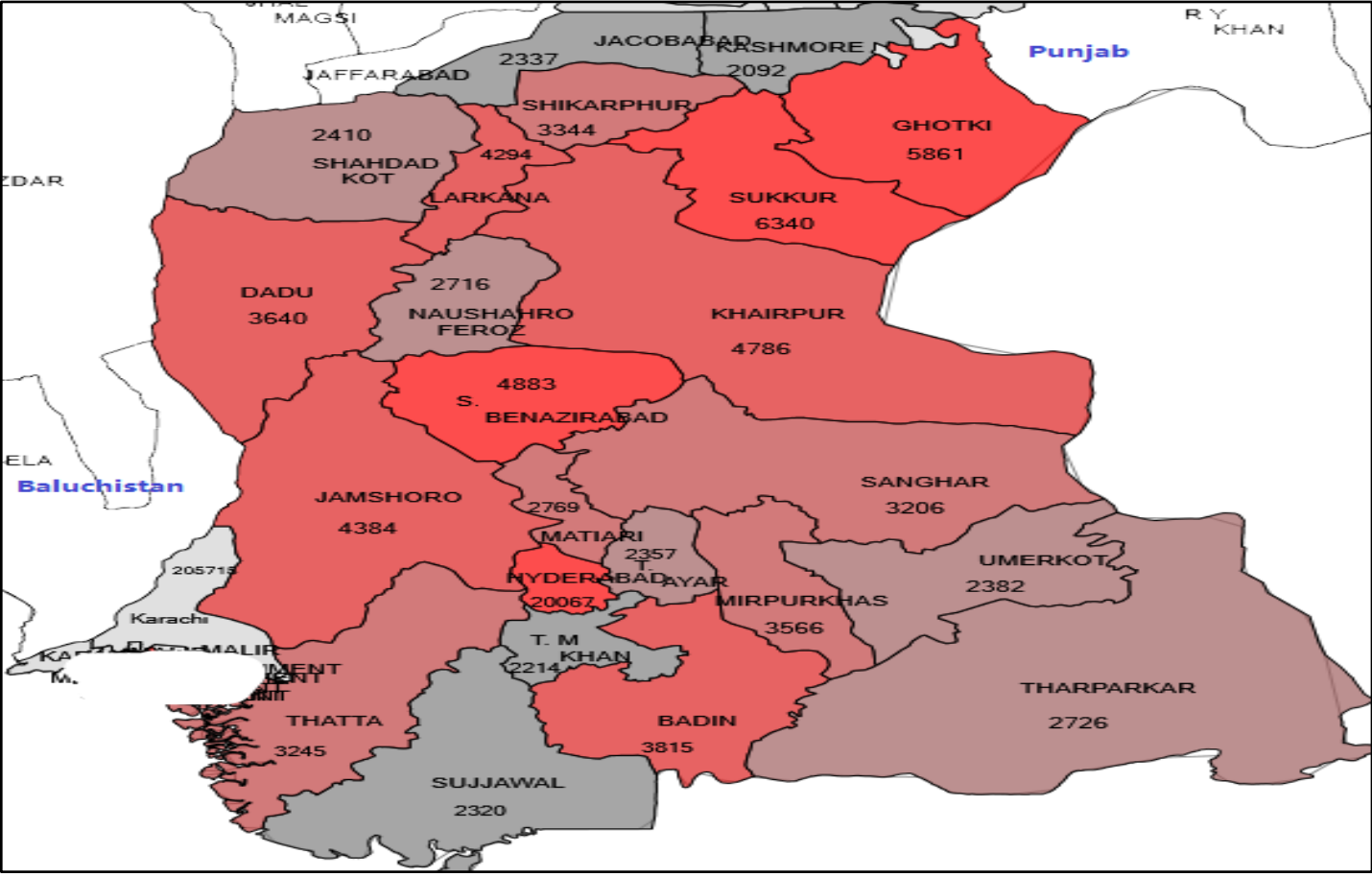
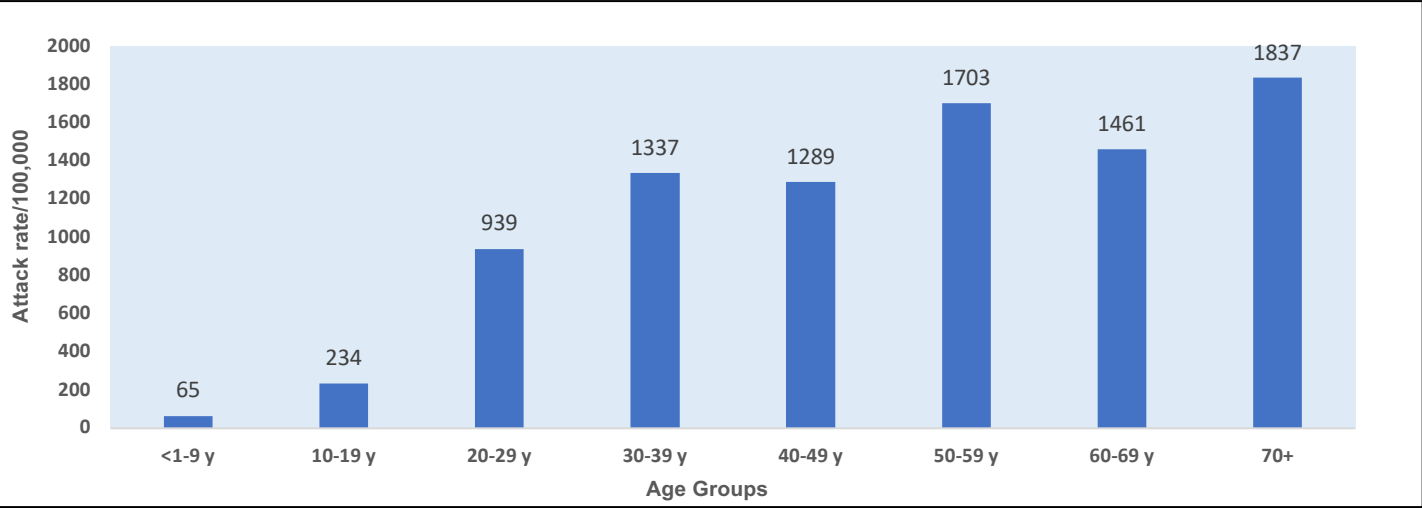


Figure-2: Sindh – Age group-wise Attack Rates /100,000 population (June 05, 2021)

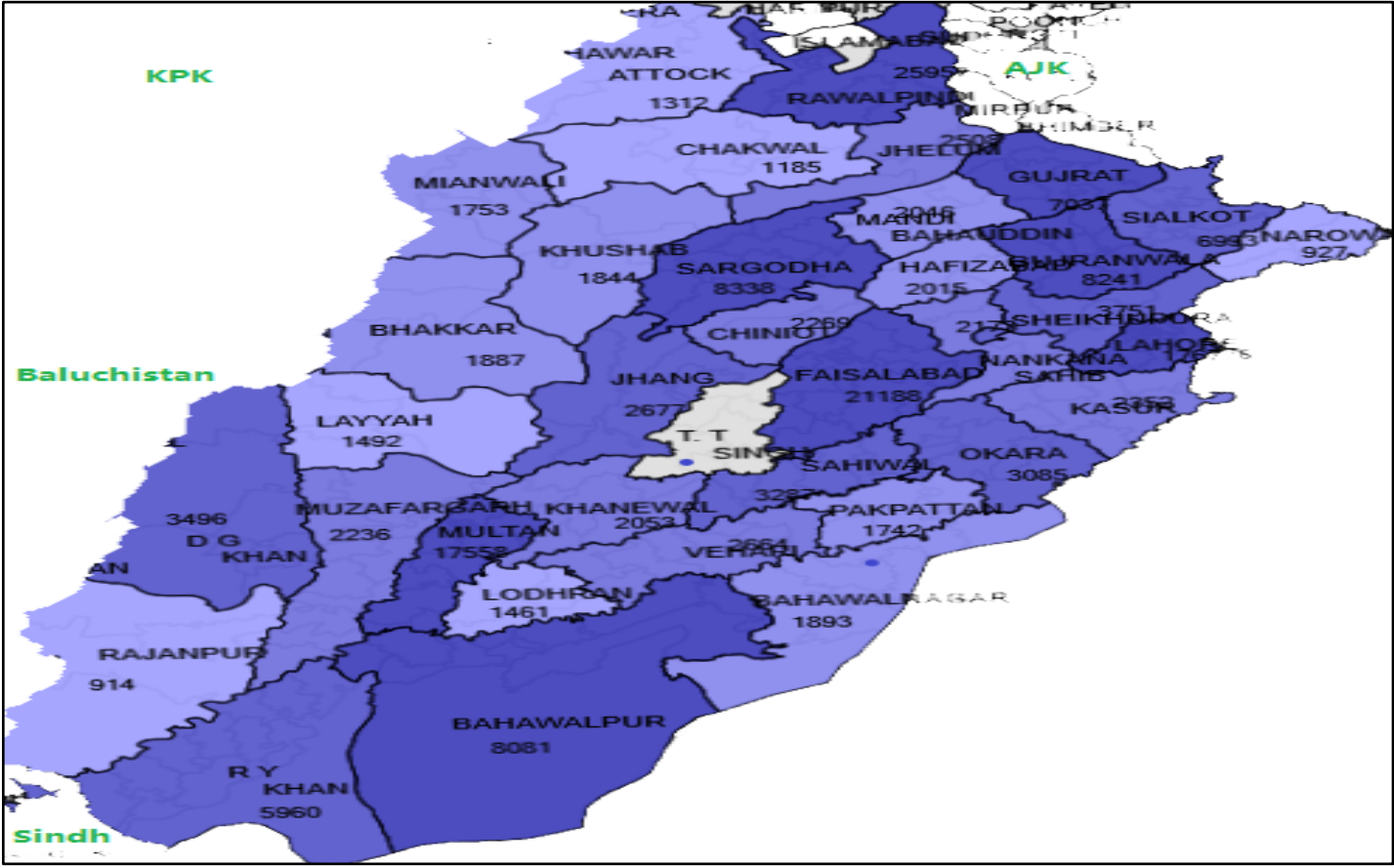


PDSRU Punjab

PDSRU Punjab has reported total 5,252,026 suspected cases of COVID-19 and out of these 344,498 were lab confirmed COVID-19 cases up to June 05, 2021. 317,947 cases have recovered and 10,314 cases expired due to COVID-19. District

Lahore has the highest number of confirmed cases (n=1,76,776) followed by District Rawalpindi (n=25,957), District Faisalabad (n=21,188), District Multan (n=17,558) and District Gujranwala (n=8,241) respectively.

Figure-3: Geographical Distribution of COVID-19 Cases in Punjab Province (Up to week 23)



PDSRU - Baluchistan province

The department of Health Baluchistan has reported 25,819 positive cases of COVID-19 and 289 deaths until June 05, 2021. 24,391 cases have recovered. District Quetta has the highest number of confirmed cases (n=17,914) followed by District Kech (n=1126), District Khuzdar (n=967) and District

Lasbela (n=675). Age group 30-44 has the highest number of COVID-19 cases (n=8,172) followed by age group 15-29 (n=7,339) & age group 45-59 (n=4,400).

Figure-4: Geographical Distribution of COVID-19 Cases in Baluchistan Province (Cumulative up to Week 23)

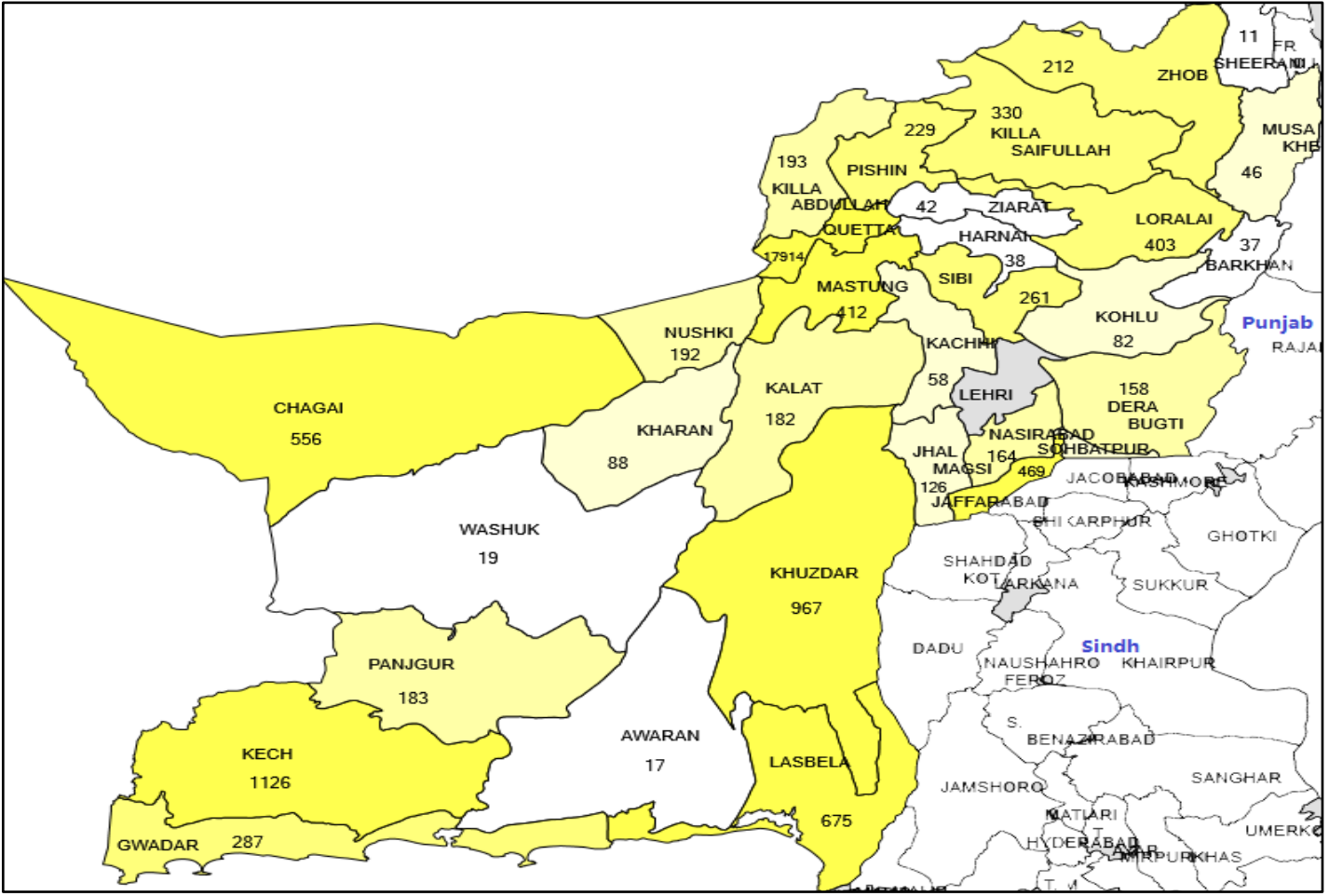
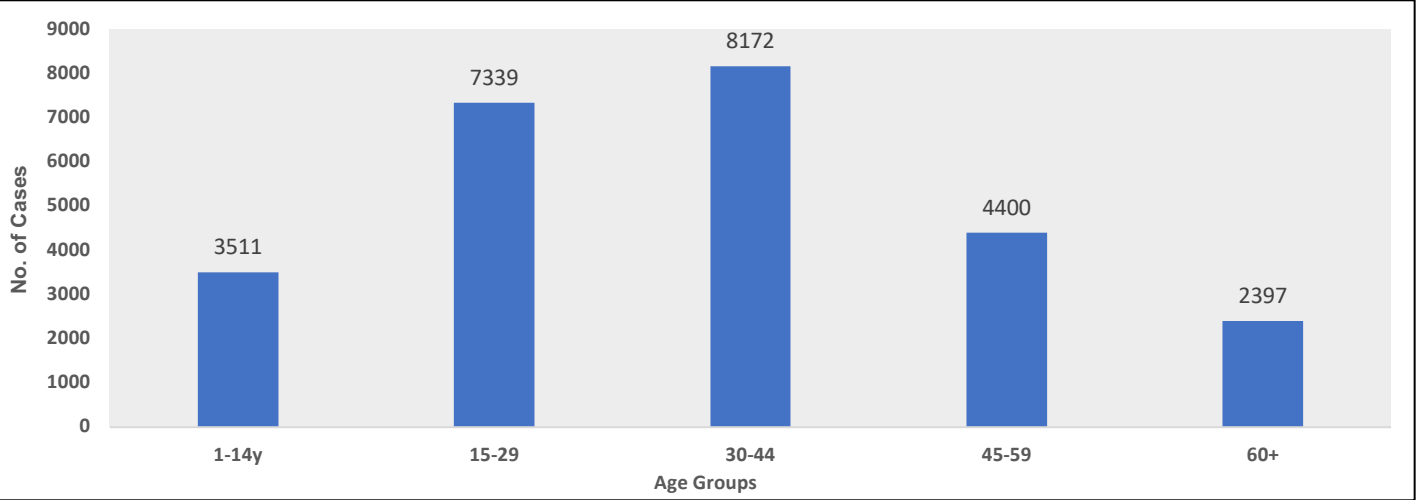


Figure-5: Baluchistan –Age group wise distribution of COVID-19 positive cases (up to June 05,2021)



PDSRU- Gilgit-Baltistan (GB)

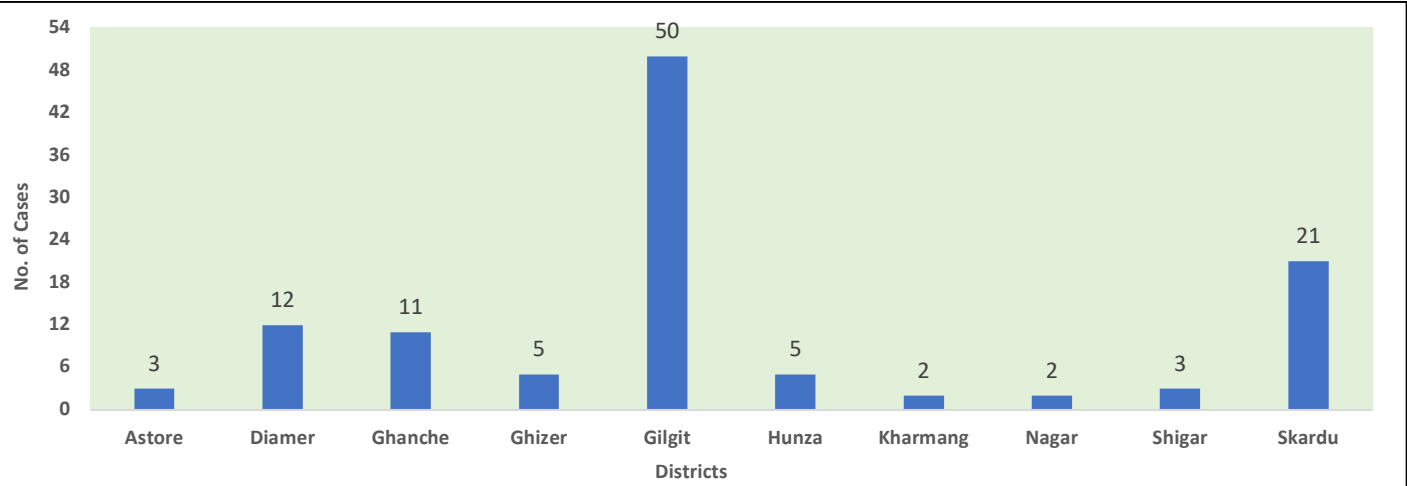
PDSRU GB has reported total 121,656 suspected cases of COVID-19 and out of these 6,972 were lab confirmed COVID-19 up to June 05,2021 and 114 cases were detected during last week, while no lab results are awaited. 121,310 samples were processed and 106,630 suspects were declared negative for

COVID-19. 5,199 cases have recovered from COVID-19 while 107 cases expired. During current week highest number of COVID-19 cases were detected in District Gilgit (n=50) followed by District Skardu (n=21) and District Diamer (n=12).

Table -2 Detail of number of samples, confirmed Covid-19 cases & Deaths in GB up to June 05,2021

District	Number of Suspects	Negative	Total Samples Processed	Positive	Awaited	Recovered	Expired	Samples Discarded
Astore	13430	12610	13422	03	00	407	05	08
Diamer	15056	13486	15055	12	00	302	05	01
Ghanche	7722	7267	7626	11	00	130	05	96
Ghizer	8925	8294	8923	05	00	441	07	02
Gilgit	28036	25284	27952	50	00	2015	40	84
Hunza	16600	9954	16583	05	00	647	03	17
Kharmang	5468	5294	5442	02	00	129	00	26
Nagar	6004	5461	6002	02	00	212	04	02
Shigar	5107	4791	5079	03	00	166	04	28
Skardu	15308	14189	15226	21	00	750	34	82
Grand Total	121656	106630	121310	114	00	5199	107	346

Figure-6: GB-District-Wise distribution of confirmed COVID-19 cases, May 30- June 05,2021



PDSRU-AJK

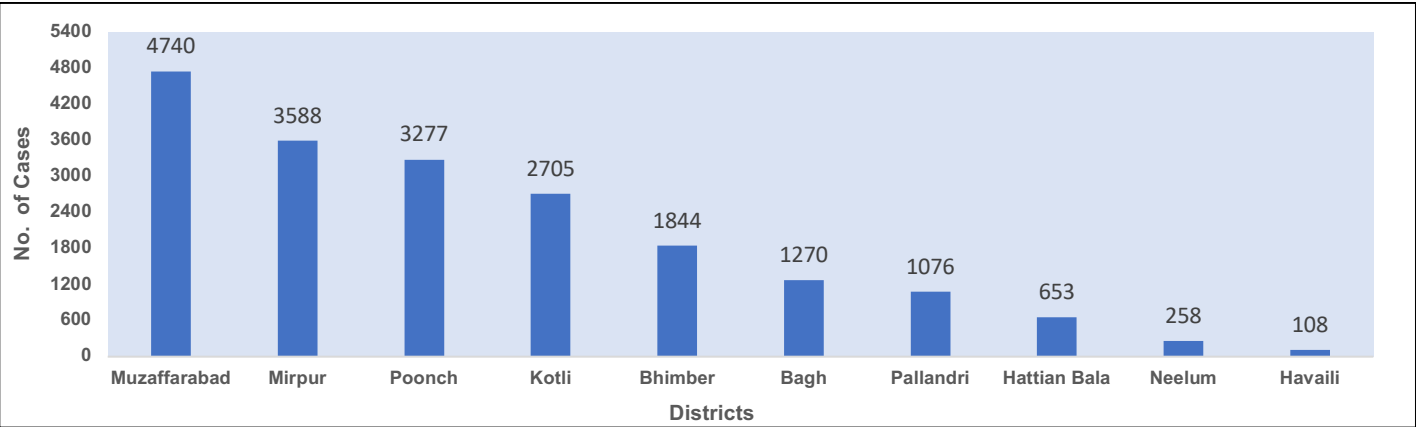
PDSRU AJK has reported total 201,343 suspected cases of COVID-19 and out of these 19519 were lab confirmed COVID-19 up to June 05, 2021 while no lab-results of suspected cases are awaited. 18,261

cases have recovered from COVID-19 and 553 cases expired due to COVID-19. District Muzaffarabad has the highest number of cases (n=4,740) followed by District Mirpur (n=3,588), District Poonch (n=3,277) and District Kotli (n=2,705).

Table -3: Distribution of suspected and confirmed Covid-19 cases in AJK up to June 05,2021

Total Suspected Cases	Lab Tests Conducted	Lab Confirmed Cases	Active Cases	Recovered	Total Deaths
201,343	201,863	19,519	704	18,261	553

Figure-7: AJK-District-Wise distribution of confirmed COVID-19 cases up to June 05,2021



PDSRU-KPK

PDSRU KPK has reported total 1,538,516 suspected cases of COVID-19 and out of these 1,34,558 were lab confirmed COVID-19 up to June 05, 2021 while 4,158 patients expired. District Peshawar has the highest number of cases (n=49,454) followed by

District Mardan (n=8,753), District Swat (n=8,153) and District Nowshera (n=5,572). Age group 60-69 years has the highest attack rate/100,000 (AR=940) followed by 40-49 years age group (AR=864) and 50-59 years age group (AR=734).

Figure-8: Geographical Distribution of COVID-19 Cases in KPK Province (Cumulative up to Week 23)

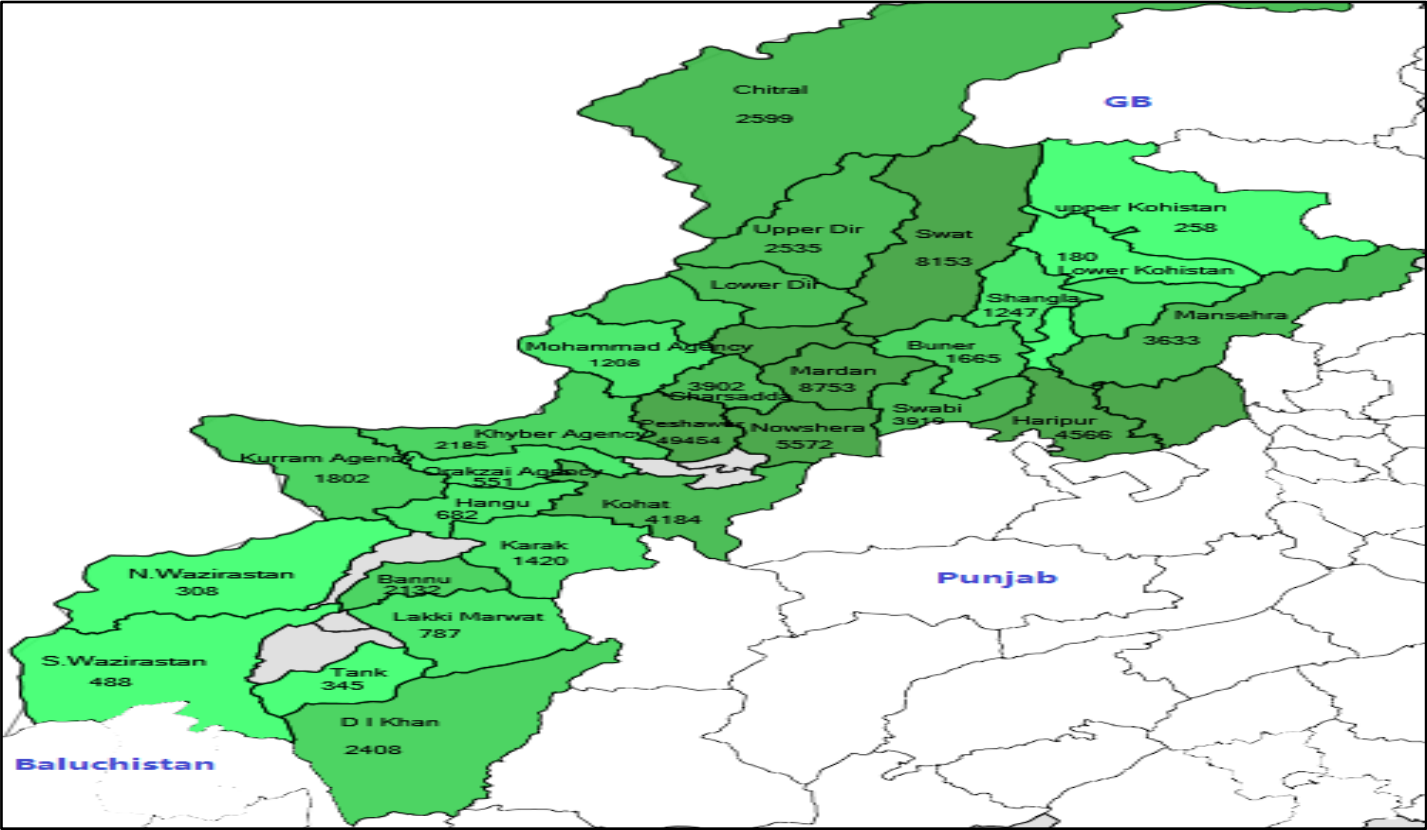
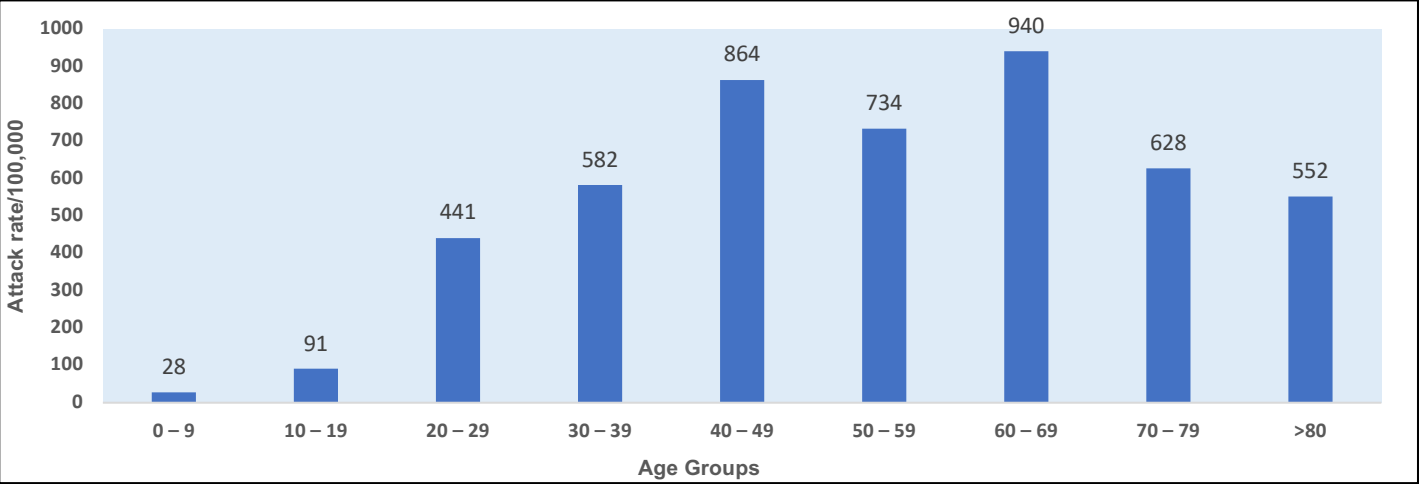


Figure-9: KPK –Attack rates /100,000 population in different age groups (up to June 05, 2021)



Communicable Disease Surveillance

Measles Surveillance:

In 2020, total **1986** confirmed Measles cases reported from all PDSRUs/RDSRUs. In week 23, 183 cases of measles were reported from KPK & Baluchistan.

Dengue Surveillance:

In 2018, total **3204** Dengue cases reported from Sindh. In 2019 total **24,610** cases reported which includes **48** new case reported from Baluchistan. In week 23, 110 cases were reported from Sindh & Baluchistan.

Diphtheria/Pertussis Surveillance:

During 2018 total **464** and during 2019 total **614**-suspected cases of Diphtheria were reported. In week 23, 01 cases of diphtheria was reported from KPK.

CCHF Surveillance:

In 2018, total **63** CCHF (suspected and confirmed) cases were reported from DSRUs and **75** cases have been reported in 2019. During week 23, no case was reported from any province or region.

Table-4: Weekly and Cumulative Diseases Updates June 05, 2021

	Disease	Total Cases in 2020	May 30-June 05, 2021	Total Cases in 2021
1	CCHF	19	0	4
2	Varicella	235	0	0
3	Dengue	4024	110	1559
4	Chikungunya	0	0	0
5	Measles	1986	183	2841
6	Diphtheria/Pertussis	140	1	32
7	Suspected / confirmed Seasonal Influenza	9	0	0
8	NNT	150	0	24

Table 5: Dengue cases reported in 2017, 2018, month-wise distribution in 2019 & current week (All provinces and regions)

Month	KPK	Sindh	AJK	ICT	TDs - KP	Baluch	Punjab	Total
Jan–Dec 2017	18,857	2,884	6	120	406	86	579	22,938
Jan-Dec 2018	332	2088	1	0	175	69	539	3204
Jan-Dec 2019	5214	2937	506	2847	1484	2841	8826	24547
Jan-Dec 2020	3	2722	2	184	0	493	38	3,442
Total	24406	10631	515	3151	2065	3489	9982	54131
05/06/2021	0	43	0	0	0	67	0	110
Total (2021)	0	817	0	0	0	742	0	1559

Extensive drug Resistant (XDR) Typhoid Fever Surveillance in Sindh Province

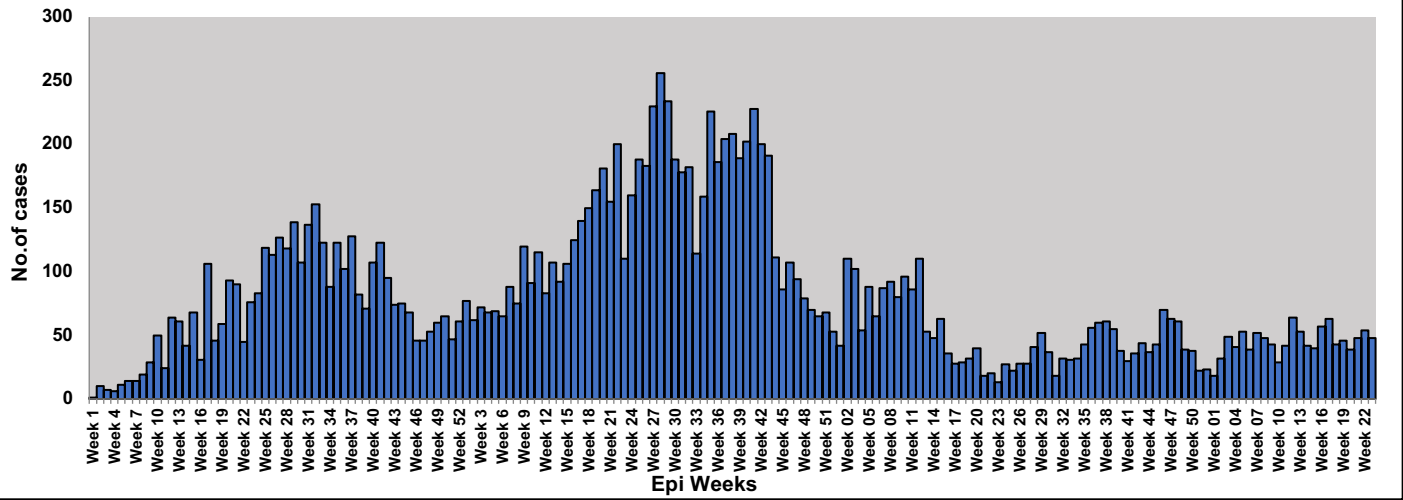
In Karachi total 14,360 cases of extensive drug resistance typhoid fever were reported from January 01, 2017 to June 05, 2021. During current week total 48 cases of XDR typhoid fever were reported from different hospitals in Karachi. The XDR Typhoid cases were reported mostly among the children and maximum number of XDR cases 6043 (41%) were reported in the age group 0-4 years. The overall attack rate was 72/100,000. The age group 0-4 years was the most affected (attack rate 222/100,000) followed by age group 5-9 years (attack rate 156/100,000). Females have higher attack rate 81/100,000 as compared to Males.

Table-6: Number of XDR Typhoid fever cases Karachi from January 1, 2017 to June 05, 2021

Year	Year	XDR Cases
Jan to December	2017	175
Jan to December	2018	3712
Jan to December	2019	7088
Jan to December	2020	2510
Till June 05, 2021	2021	875

Total14,360

Figure 10: Week-wise number of XDR Typhoid fever cases in Karachi, from January 1, 2017 to June 05, 2021



XDR Typhoid Surveillance Data Sindh-Province (Excluding Karachi)

Total 7523 Salmonella Typhoid cases reported from November 2016 to June 05, 2021 from different districts of Sindh province (excluding Karachi). Among these cases 5741 were Extensive Drug Resistant cases. Out of these cases n=3988 (69.5%) were reported from District Hyderabad. The most affected age group was 0 to 4 years (n=1474) with attack rate 49.9/10000 population followed by 5-9 years of age group (n= 1108) with attack rate 37.8/10000 population. Over all attack rate is 18.2/10000 population (n=3988).

Table 7: Extensive drug Resistant (XDR) Typhoid Fever Surveillance Hyderabad and other districts

Year	Hyderabad	Other District	Total
2016	12	0	12
2017	485	4	489
2018	891	207	1098
2019	1645	998	2643
2020	708	415	1123
January 01 – May 29, 2021	237	120	362
Current week May 30-Jun 05, 2021	10	4	14
Total	3988	1748	5741

Figure 11:XDR Typhoid Cases District Hyderabad Nov-2016 to June 05, 2021

