



WEEKLY FIELD EPIDEMIOLOGY REPORT

Volume 3—Issue 22 May 23-29, 2021

Date: June 02, 2021

Provincial Technical Officers and fellows of FELTP assigned at the Disease Surveillance, Response Units (DSRU's) are working with provincial, and district health authorities on event based disease surveillance and outbreak response. DSRUs are sharing the disease surveillance data, outbreak reports and activities of FELTP fellows to the Federal Disease Surveillance and Response Unit (FDSRU) at the Field Epidemiology and Disease Surveillance Division (FEDSD) National Institute of Health (NIH) Islamabad on weekly basis.

COVID-19 Surveillance

PDSRUs in Provinces are working with the provincial department of health on COVID-19 surveillance, response and contact tracing since February, 2020 in Pakistan. FELTP fellows Alumni are actively involved in COVID-19 Surveillance throughout Pakistan. Data is being shared with FDSRU on daily basis and a SitRep is being issued by FEDSD National Institute of Health Islamabad. FDSRU has developed a mechanism for tracking of travelers from other countries to Pakistan since 02

February 2020. Daily flights data from international airports in Pakistan is being shared by the Central Health establishment (CHE) Islamabad with FDSRU teams who conduct daily calls on given contact numbers of the travelers to ask about their health status, advise them for immediate contact at the nearest designated hospital in case of COVID-19 symptoms. Total 131,856 travelers have been traced and contacted by May 29, 2021.

Table-1: Weekly Surveillance data COVID-19 by May 29, 2021

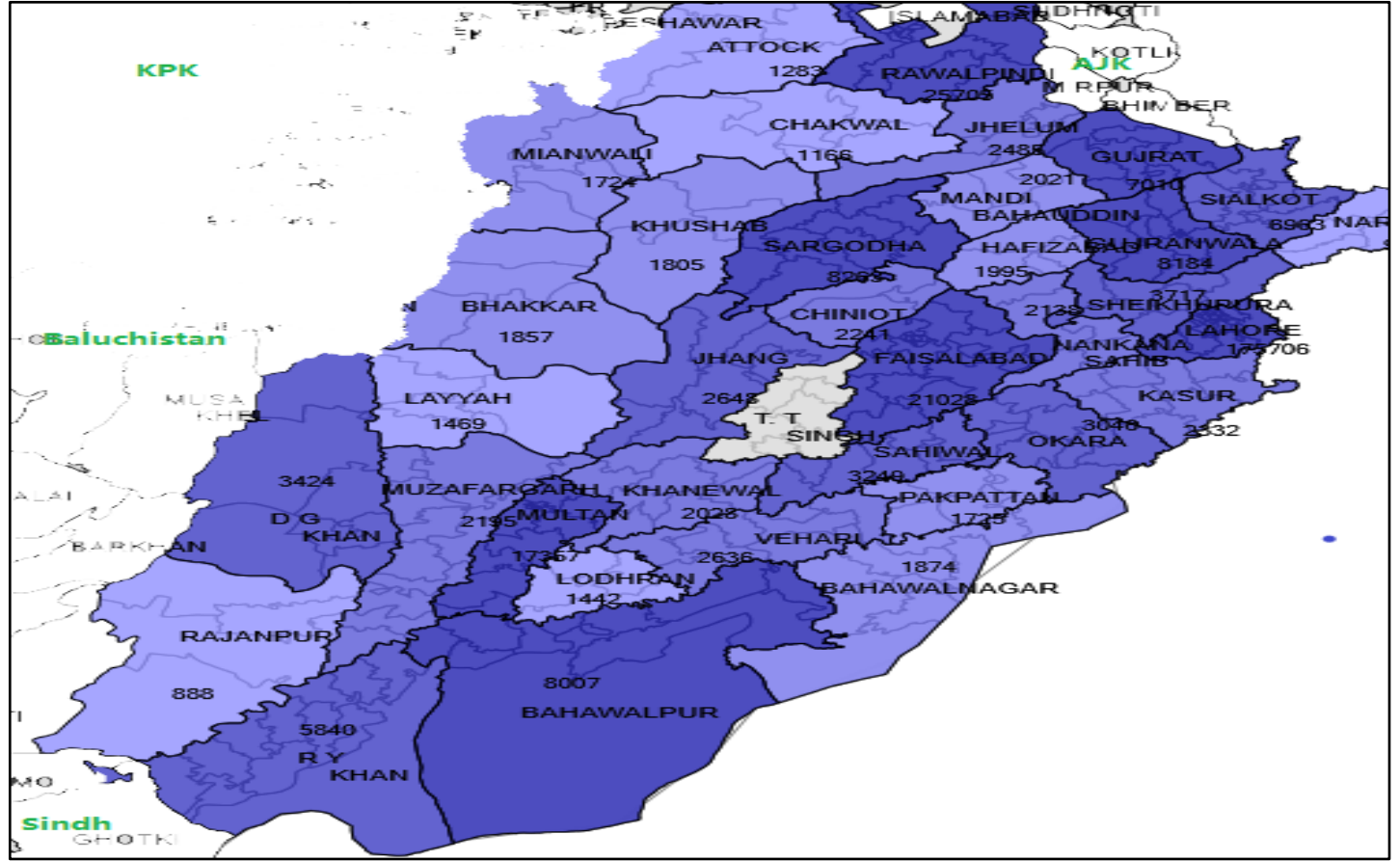
Province/ Region	Suspected cases reported	Lab Update		Hospital Update		
		Cumulative	Tests performed (Cumulative)	Tested positive cases (Cumulative)	Still admitted	Discharged/Recovered
AJK	196,397	196,397	19,170	48	17,294	540
Baluchistan	198,845	267,934	25,083	31	23,595	276
GB	118,981	120,698	5,572	09	5,356	107
Islamabad	1,578,080	1,578,080	81,116	248	74,791	757
KP	1,484,257	1,791,369	132,170	909	122,795	4,060
Punjab	5,075,899	5,123,420	339,073	2,054	308,733	9,982
Sindh	4,091,460	4,091,460	316,752	1,032	286,758	5,014
Total	12,743,919	13,169,358	918,936	4,331	839,322	20,736

PDSRU Punjab

PDSRU Punjab has reported total 5,098,253 suspected cases of COVID-19 and out of these 339,662 were lab confirmed COVID-19 cases up to May 29, 2021. 309,488 cases have recovered and 9,999 cases expired due to COVID-19. District

Lahore has the highest number of confirmed cases (n=1,75,706) followed by District Rawalpindi (n=25,299), District Faisalabad (n=25,705), District Multan (n=17,357) and District Gujranwala (n=8,184) respectively.

Figure-3: Geographical Distribution of COVID-19 Cases in Punjab Province (Up to week 22)



PDSRU - Baluchistan province

The department of Health Baluchistan has reported 25,083 positive cases of COVID-19 and 276 deaths until May 29, 2021. 23,595 cases have recovered. District Quetta has the highest number of confirmed cases (n=17,428) followed by District Kech

(n=1070), District Khuzdar (n=942) and District Lasbela (n=658). Age group 30-44 has the highest number of COVID-19 cases (n=7,951) followed by age group 15-29 (n=7,165) & age group 45-59 (n=4,269)

Figure-4: Geographical Distribution of COVID-19 Cases in Baluchistan Province (Cumulative up to Week 22)

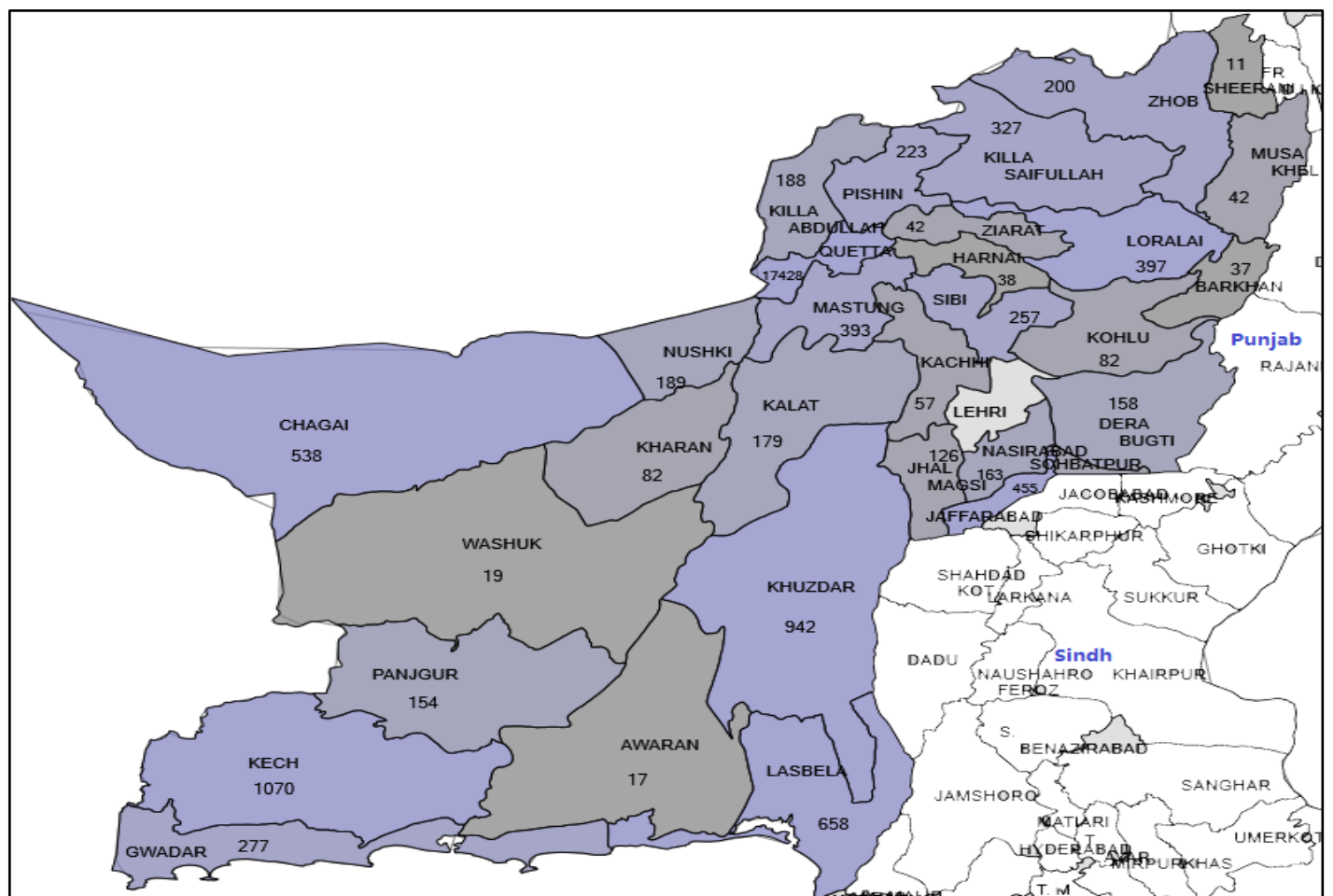
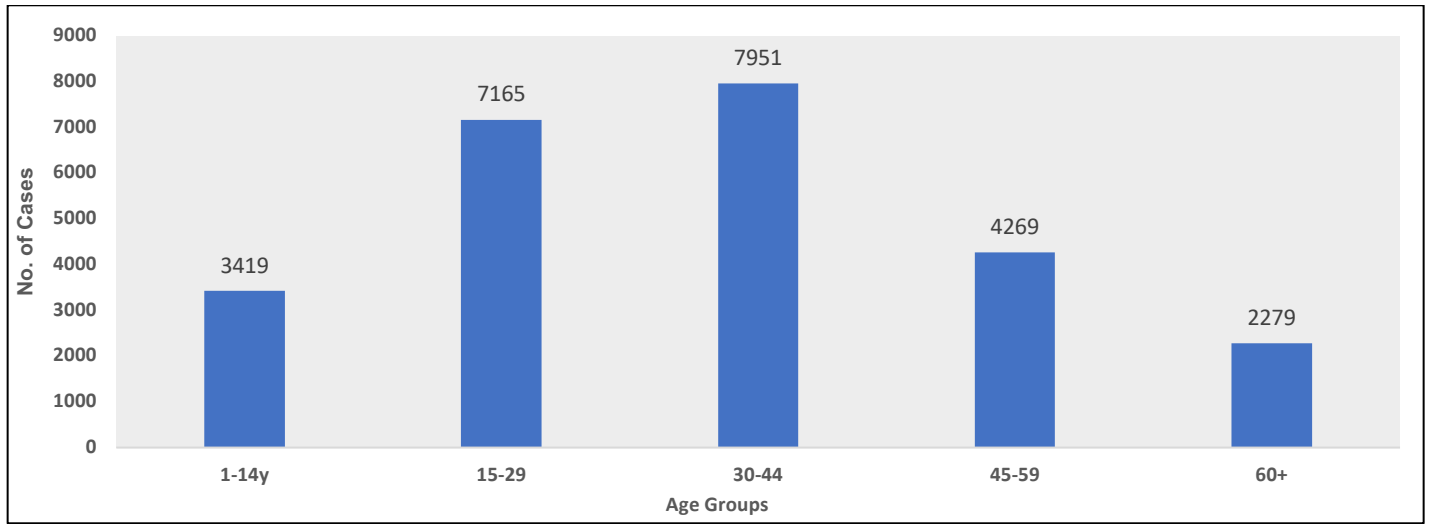


Figure-5: Baluchistan –Age group wise distribution of COVID-19 positive cases (up to May 29,2021)



PDSRU- Gilgit-Baltistan (GB)

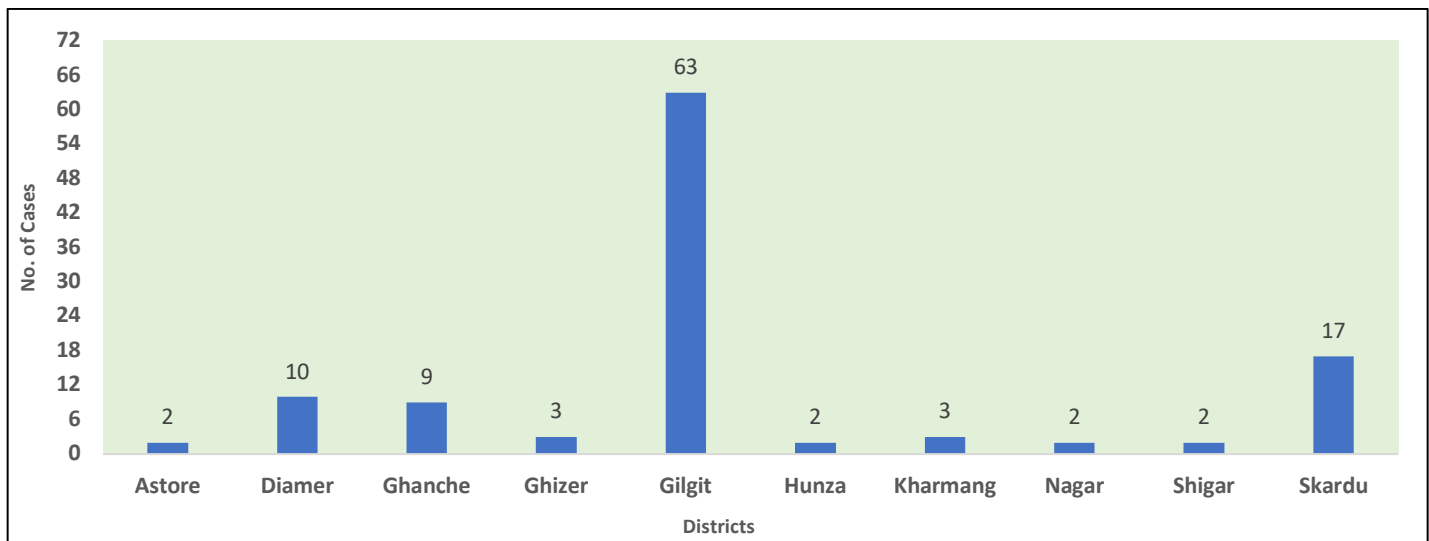
PDSRU GB has reported total 119,394 suspected cases of COVID-19 and out of these 6,858 were lab confirmed COVID-19 up to May 29,2021 and 113 cases were detected during last week, while no lab results are awaited. 119,048 samples were processed and 104,504 suspects were declared negative for

COVID-19. 5,136 cases have recovered from COVID-19 while 107 cases expired. During current week highest number of COVID-19 cases were detected in District Gilgit (n=63) followed by District Skardu (n=17) and District Diamer (n=10).

Table -2 Detail of number of samples, confirmed Covid-19 cases & Deaths in GB up to May 29,2021

District	Number of Samples	Negative	Total Samples Processed	Positive	Awaited	Recovered	Expired	Samples Discarded
Astore	13108	12289	13100	02	00	407	05	08
Diamer	14680	13114	14679	10	00	300	05	01
Ghanche	7541	7092	7445	09	00	126	05	96
Ghizer	8893	8264	8891	03	00	441	07	02
Gilgit	27507	24786	27423	63	00	1971	40	84
Hunza	16313	9742	16296	02	00	647	03	17
Kharmang	5405	5231	5379	03	00	128	00	26
Nagar	5934	5391	5932	02	00	212	04	02
Shigar	5036	4721	5008	02	00	166	04	28
Skardu	14977	13874	14895	17	00	738	34	82
Grand Total	119394	104504	119048	113	00	5136	107	346

Figure-6: GB-District-Wise distribution of confirmed COVID-19 cases, May 23-29,2021



PDSRU-AJK

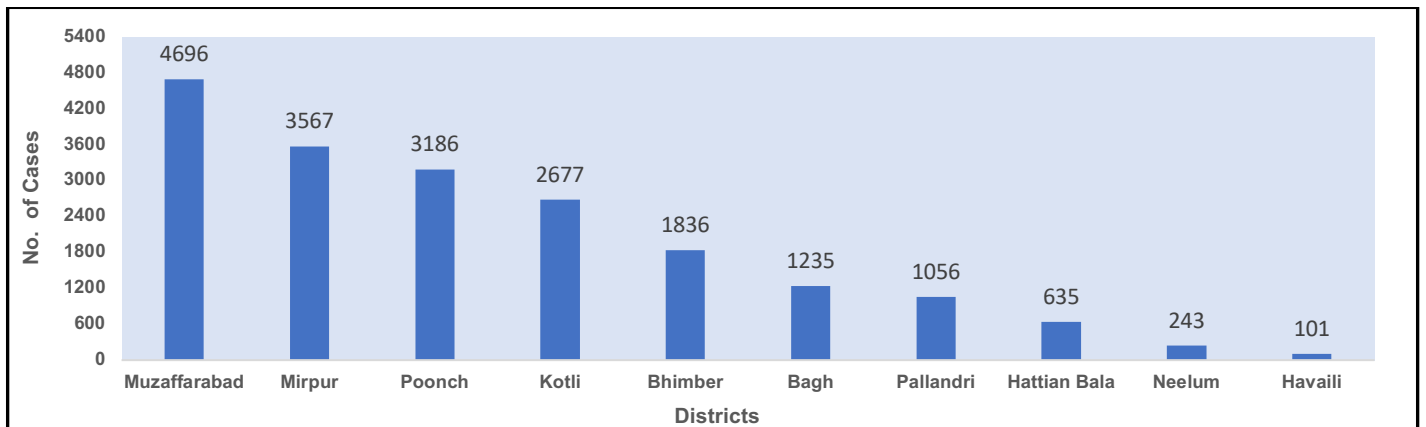
PDSRU AJK has reported total 196,988 suspected cases of COVID-19 and out of these 19,232 were lab confirmed COVID-19 up to May 29, 2021 while no lab-results of suspected cases are awaited. 17,503

cases have recovered from COVID-19 and 543 cases expired due to COVID-19. District Muzaffarabad has the highest number of cases (n=4,696) followed by District Mirpur (n=3,567), District Poonch (n=3,186) and District Kotli (n=2,677).

Table -3: Distribution of suspected and confirmed Covid-19 cases in AJK up to May 29,2021

Total Suspected Cases	Lab Tests Conducted	Lab Confirmed Cases	Active Cases	Recovered	Total Deaths
196,988	197,039	19,232	1,186	17,503	543

Figure-7: AJK-District-Wise distribution of confirmed COVID-19 cases up to May 29,2021



PDSRU-KPK

PDSRU KPK has reported total 1,484,257 suspected cases of COVID-19 and out of these 1,32,549 were lab confirmed COVID-19 up to May 29, 2021 while 4,073 patients expired. District Peshawar has the highest number of cases (n=48,974) followed by

District Mardan (n=8,608), District Swat (n=8,044) and District Nowshera (n=5,501). Age group 60-69 years has the highest attack rate/100,000 (AR=926) followed by 40-49 years age group (AR=851) and 50-59 years age group (AR=723).

Figure-8: Geographical Distribution of COVID-19 Cases in KPK Province (Cumulative up to Week 22)

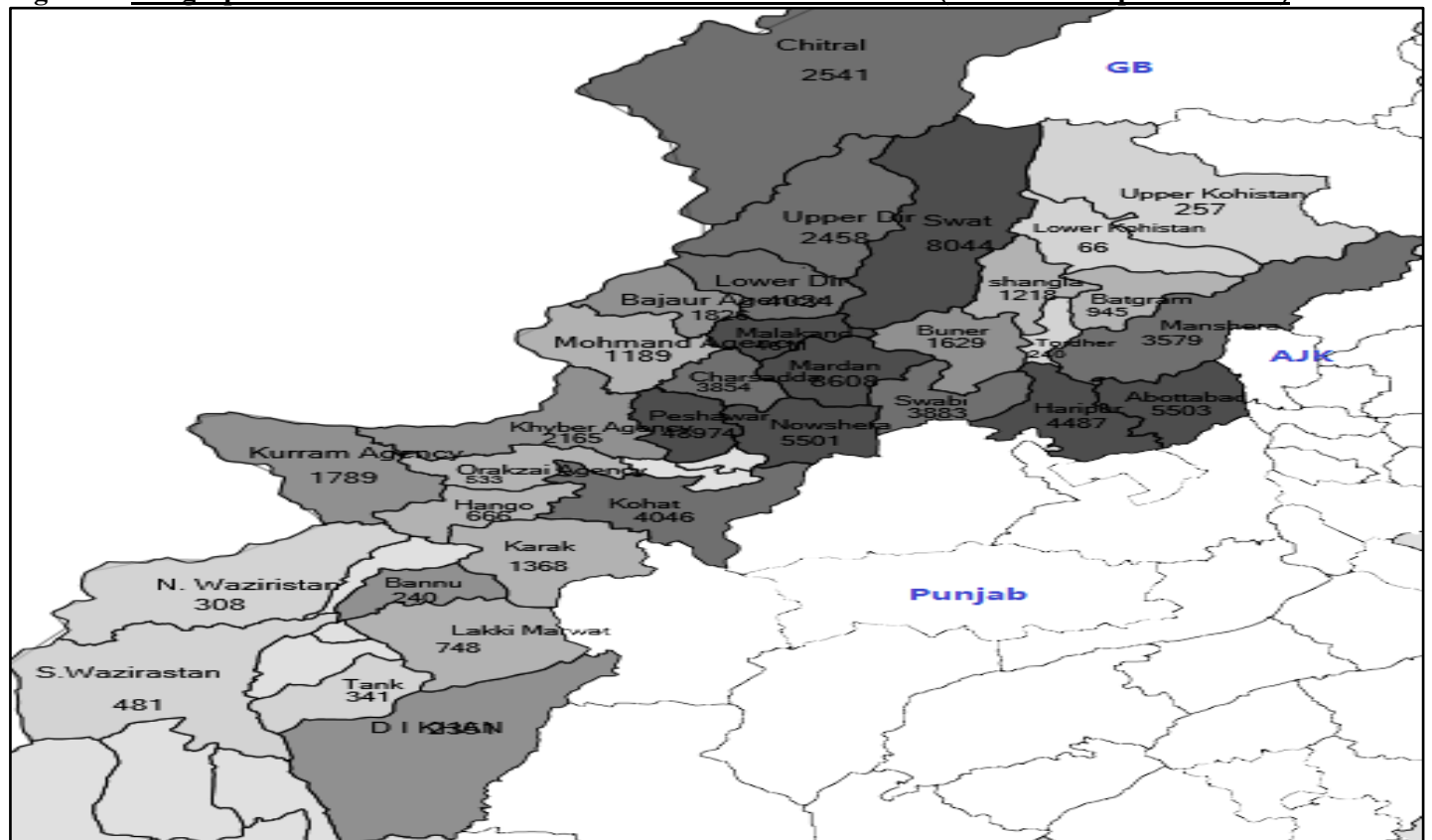
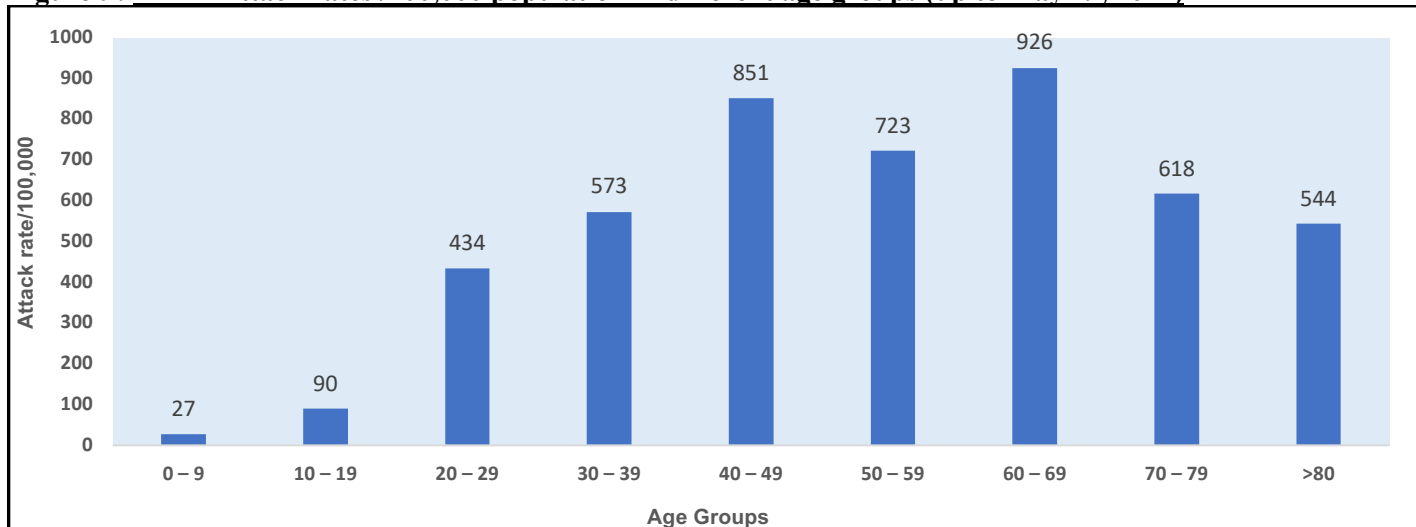


Figure-9: KPK –Attack rates /100,000 population in different age groups (up to May 29, 2021)

Communicable Disease Surveillance

Measles Surveillance:

In 2020, total **1986** confirmed Measles cases reported from all PDSRUs/RDSRUs. In week 22, 170 cases of measles were reported from KPK & Baluchistan.

Dengue Surveillance:

In 2018, total **3204** Dengue cases reported from Sindh. In 2019 total **24,610** cases reported which includes **48** new case reported from Baluchistan. In week 22, 182 cases were reported from Sindh & Baluchistan.

Diphtheria/Pertussis Surveillance:

During 2018 total **464** and during 2019 total **614**-suspected cases of Diphtheria were reported. In week 22, 05 cases of pertussis were reported from Baluchistan.

CCHF Surveillance:

In 2018, total **63** CCHF (suspected and confirmed) cases were reported from DSRUs and **75** cases have been reported in 2019. During week 22, no case was reported from any province or region.

Table-4: Weekly and Cumulative Diseases Updates May 29, 2021

	Disease	Total Cases in 2020	May 23-29, 2021	Total Cases in 2021
1	CCHF	19	0	4
2	Varicella	235	0	0
3	Dengue	4024	182	1449
4	Chikungunya	0	0	0
5	Measles	1986	170	2658
6	Diphtheria/Pertussis	140	5	31
7	Suspected / confirmed Seasonal Influenza	9	0	0
8	NNT	150	4	24

Table 5: Dengue cases reported in 2017, 2018, month-wise distribution in 2019 & current week (All provinces and regions)

Month	KPK	Sindh	AJK	ICT	TDs - KP	Baluch	Punjab	Total
Jan-Dec 2017	18,857	2,884	6	120	406	86	579	22,938
Jan-Dec 2018	332	2088	1	0	175	69	539	3204
Jan-Dec 2019	5214	2937	506	2847	1484	2841	8826	24547
Jan-Dec 2020	3	2722	2	184	0	493	38	3,442
Total	24406	10631	515	3151	2065	3489	9982	54131
29/05/2021	0	109	0	0	0	73	0	182
Total (2021)	0	774	0	0	0	675	0	1449

Extensive drug Resistant (XDR) Typhoid Fever Surveillance in Sindh Province

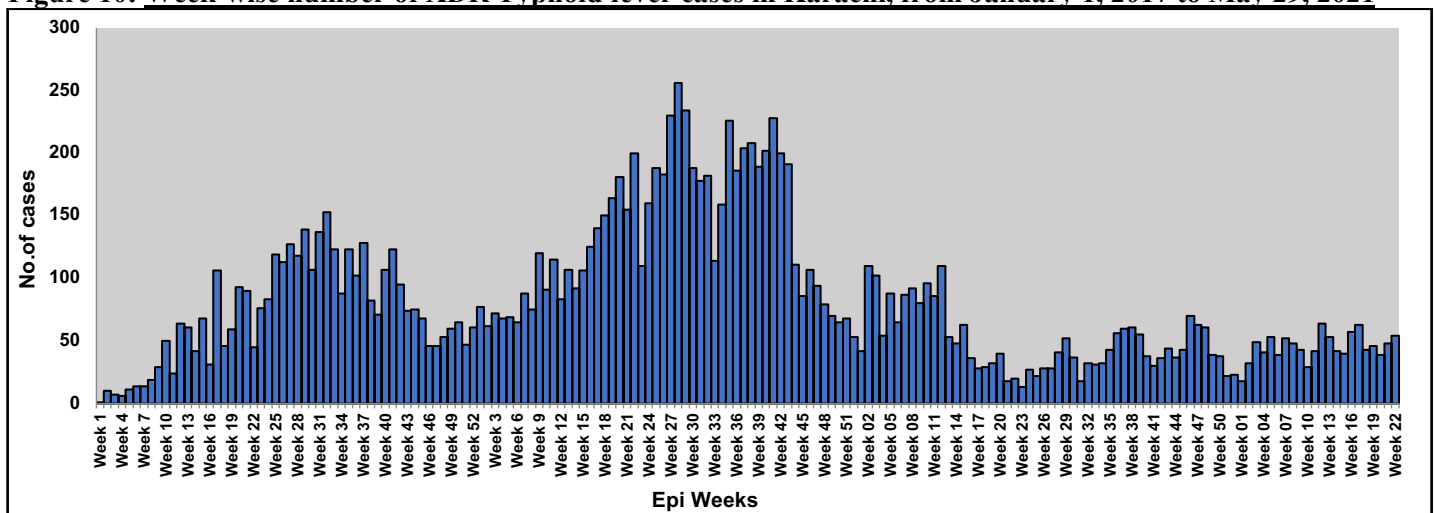
In Karachi total 14,312 cases of extensive drug resistance typhoid fever were reported from January 01, 2017 to May 29, 2021. During current week total 54 cases of XDR typhoid fever were reported from different hospitals in Karachi. The XDR Typhoid cases were reported mostly among the children and maximum number of XDR cases 6023 (41%) were

reported in the age group 0-4 years. The overall attack rate was 72/100,000. The age group 0-4 years was the most affected (attack rate 221/100,000) followed by age group 5-9 years (attack rate 155/100,000). Females have higher attack rate 81/100,000 as compared to Males.

Table-6: Number of XDR Typhoid fever cases Karachi from January 1, 2017 to May 29, 2021

Year	Year	XDR Cases
Jan to December	2017	175
Jan to December	2018	3712
Jan to December	2019	7088
Jan to December	2020	2510
Till May 29, 2021	2021	827
Total		14,312

Figure 10: Week-wise number of XDR Typhoid fever cases in Karachi, from January 1, 2017 to May 29, 2021



XDR Typhoid Surveillance Data Sindh-Province (Excluding Karachi)

Total 7505 Salmonella Typhoid cases reported from November 2016 to May 29, 2021 from different districts of Sindh province (excluding Karachi). Among these cases 5727 were Extensive Drug Resistant cases. Out of these cases n=3978 (69.5%) were reported from District Hyderabad. The most

affected age group was 0 to 4 years (n=1470) with attack rate 49.8/10000 population followed by 5-9 years of age group (n= 1106) with attack rate 37.8/10000 population. Over all attack rate is 18.2/10000 population (n=3978).

Table 7: Extensive drug Resistant (XDR) Typhoid Fever Surveillance Hyderabad and other districts

Year	Hyderabad	Other District	Total
2016	12	0	12
2017	485	4	489
2018	891	207	1098
2019	1645	998	2643
2020	708	415	1123
January 01 – May 22, 2021	225	114	344
Current week May 23-29, 2021	12	6	18
Total	3978	1744	5727

Figure 11: XDR Typhoid Cases District Hyderabad Nov-2016 to May 29, 2021

