



## **WEEKLY FIELD EPIDEMIOLOGY REPORT**

Volume 3—Issue 17 Apr 18-24, 2021

Date: April 28, 2021

Provincial Technical Officers and fellows of FELTP assigned at the Disease Surveillance, Response Units (DSRU's) are working with provincial, and district health authorities on event based disease surveillance and outbreak response. DSRUs are sharing the disease surveillance data, outbreak reports and activities of FELTP fellows to the Federal Disease Surveillance and Response Unit (FDSRU) at the Field Epidemiology and Disease Surveillance Division (FEDSD) National Institute of Health (NIH) Islamabad on weekly basis.

### **COVID-19 Surveillance**

PDSRUs in Provinces are working with the provincial department of health on COVID-19 surveillance, response and contact tracing since February, 2020 in Pakistan. FELTP fellows Alumni are actively involved in COVID-19 Surveillance throughout Pakistan. Data is being shared with FDSRU on daily basis and a SitRep is being issued by FEDSD National Institute of Health Islamabad. FDSRU has developed a mechanism for tracking of travelers from other countries to Pakistan since 02

February 2020. Daily flights data from international airports in Pakistan is being shared by the Central Health establishment (CHE) Islamabad with FDSRU teams who conduct daily calls on given contact numbers of the travelers to ask about their health status, advise them for immediate contact at the nearest designated hospital in case of COVID-19 symptoms. Total 124,957 travelers have been traced and contacted by April 24, 2021.

**Table-1: Weekly Surveillance data COVID-19 by April 24, 2021**

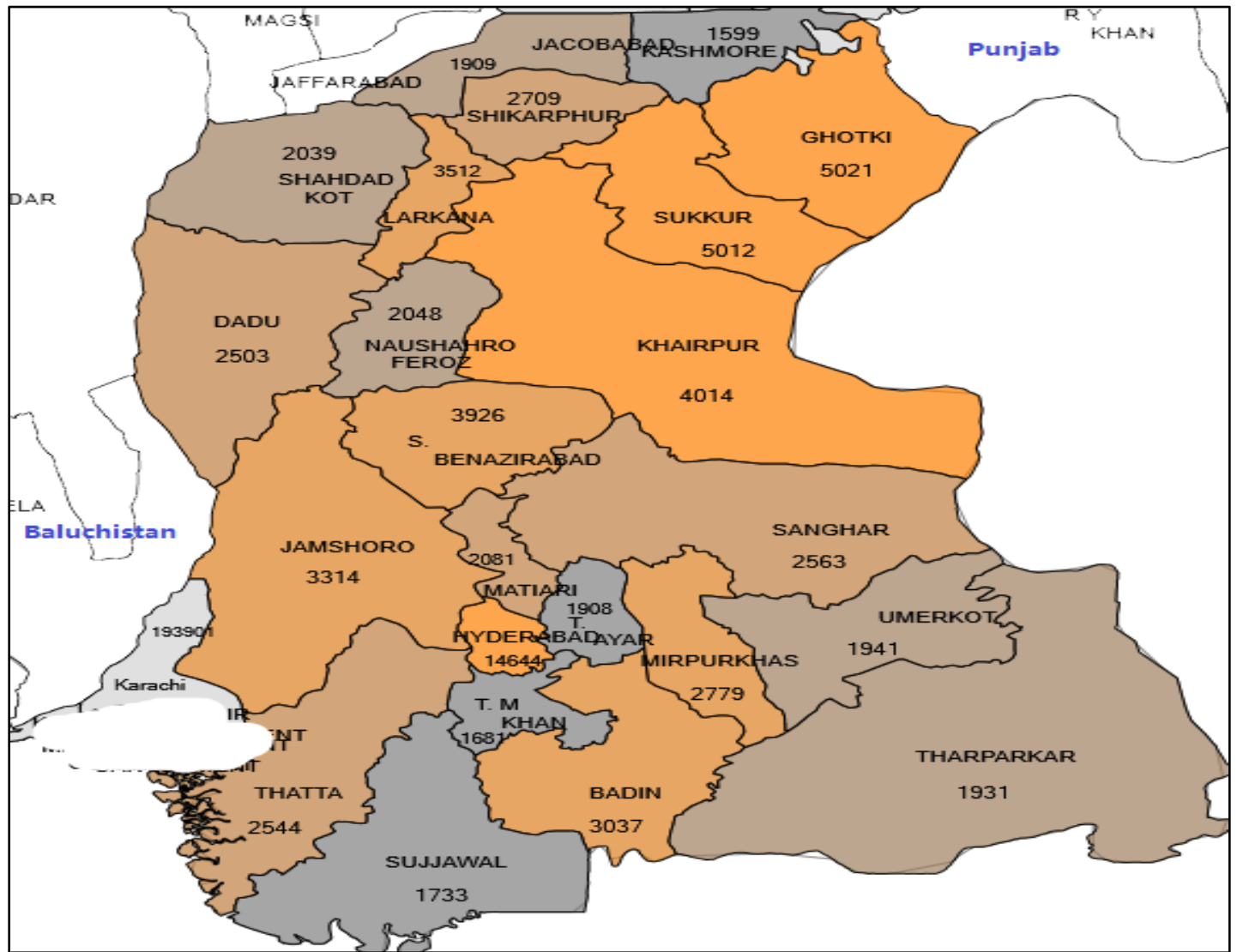
Province/ Region	Suspected cases reported		Lab Update		Hospital Update	
	Cumulative	Tests performed (Cumulative)	Tested positive cases (Cumulative)	Still admitted	Discharged/Recovered	Expired
<b>AJK</b>	171,792	171,792	16,463	91	13,714	461
<b>Baluchistan</b>	172,060	231,709	21,618	22	20,159	232
<b>GB</b>	106,467	108,178	5,253	14	5,040	104
<b>Islamabad</b>	1,449,647	1,449,647	72,981	517	59,591	660
<b>KP</b>	1,261,854	1,545,869	113,121	1,856	95,515	3,103
<b>Punjab</b>	4,422,457	4,482,189	288,598	2,783	233,655	7,964
<b>Sindh</b>	3,549,387	3,549,387	277,593	508	262,138	4,593
<b>Total</b>	<b>11,133,664</b>	<b>11,538,771</b>	<b>795,627</b>	<b>5,791</b>	<b>689,812</b>	<b>17,117</b>

### **PDSRU SINDH**

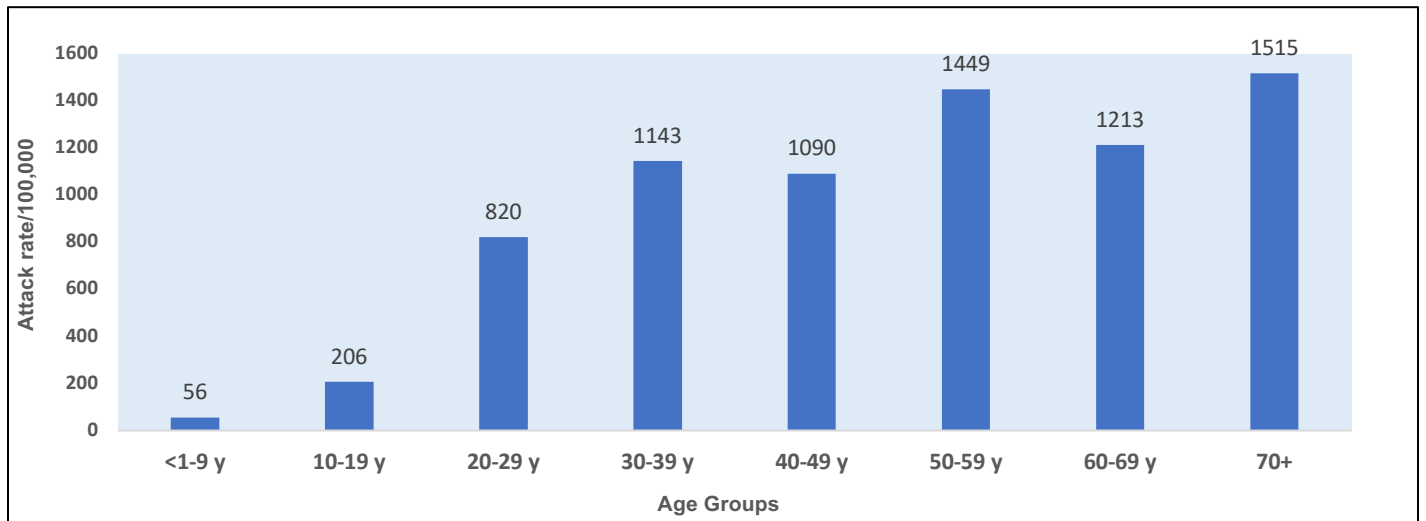
Total 278,554 confirmed COVID-19 cases were reported from Sindh until Apr 24,2021. 263,160 cases have recovered while 4,631 cases expired due to COVID-19. Most of these cases were reported from District Karachi (n=193,901) followed by District Hyderabad (n=14,644), District Ghotki

(n=5,021) and District Sukkur (n=5,012). Age group  $\geq 70$  has the highest attack rate (1515/100,000) followed by 50-59 years age group (1449/100,000), 60-69 years age group (1213/100,000) & 30-39 years age group (1143/100,000 population).

**Figure-1: Sindh - District-wise distribution of COVID-19 cases (Cumulative up to week 17)**



**Figure-2: Sindh – Age group-wise Attack Rates /100,000 population (Apr 24, 2021)**



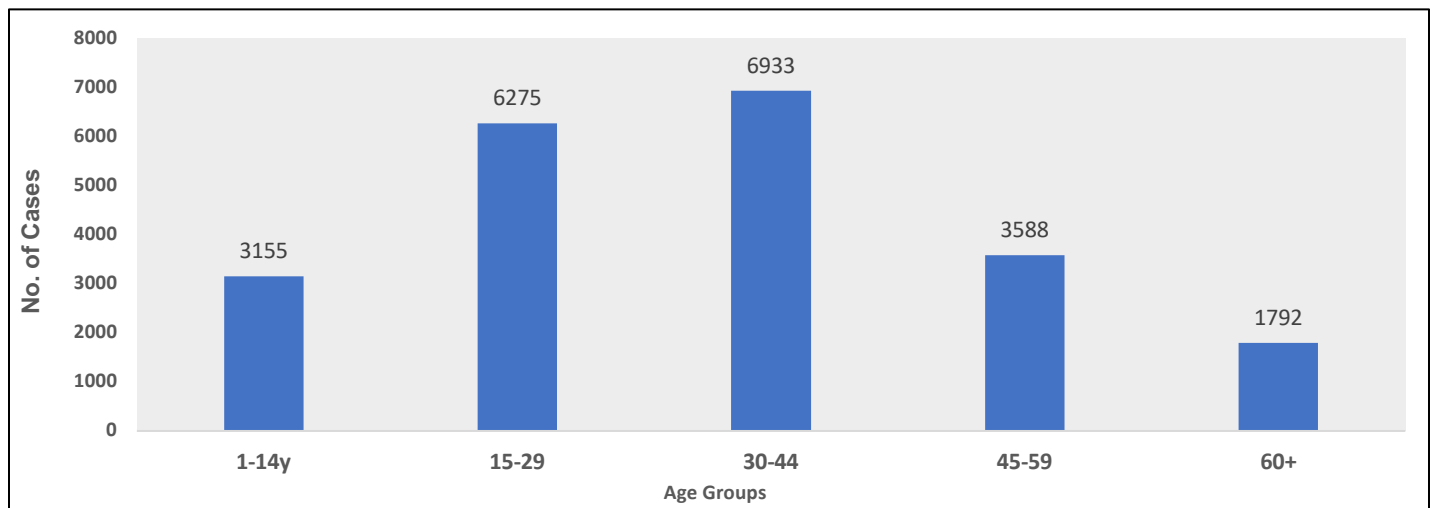
**PDSRU Punjab**

PDSRU Punjab has reported total 4,422,457 suspected cases of COVID-19 and out of these 288,598 were lab confirmed COVID-19 cases up to Apr 24, 2021. 233,655 cases have recovered and 7,964 cases expired due to COVID-19. District

Lahore has the highest number of confirmed cases (n=1,52921) followed by District Rawalpindi (n=22,693), District Multan (n=13,583), District Faisalabad (n=17,612) and Gujranwala (n=7,274) respectively.



**Figure-5: Baluchistan –Age group wise distribution of COVID-19 positive cases (up to Apr 24,2021)**



**PDSRU- Gilgit-Baltistan (GB)**

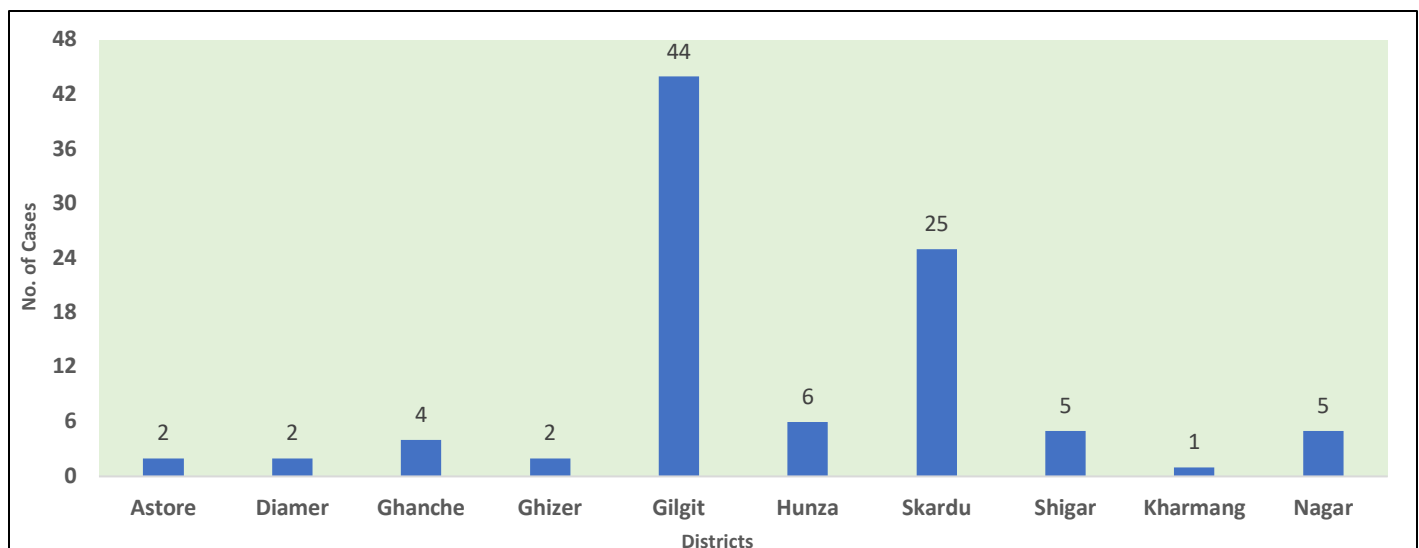
PDSRU GB has reported total 106,800 suspected cases of COVID-19 and out of these 6,362 were lab confirmed COVID-19 up to April 24,2021 and 96 cases were detected during last week, while no lab results are awaited. 106,454 samples were processed and 92,436 suspects were declared negative for

COVID-19. 4,837 cases have recovered from COVID-19 while 105 cases expired. During current week highest number of cases COVID-19 were detected in District Gilgit (n=44) followed by District Skardu (n=25) and District Hunza (n=6).

**Table -2 Detail of number of samples, confirmed Covid-19 cases & Deaths in GB up to April 24,2021**

District	Number of Samples	Negative	Total Samples Processed	Positive	Awaited	Recovered	Expired	Samples Discarded
Astore	11385	10579	11377	02	00	394	05	08
Diamer	12955	11417	12954	02	00	280	05	01
Ghanche	6844	6406	6748	04	00	120	05	96
Ghizer	7980	7363	7978	02	00	432	07	02
Gilgit	24529	21974	24445	44	00	1828	39	84
Hunza	14915	8560	14898	06	00	630	03	17
Kharmang	4847	4684	4821	01	00	119	00	26
Nagar	5500	4962	5498	05	00	204	04	02
Shigar	4677	4377	4649	05	00	148	04	28
Skardu	13168	12114	13086	25	00	682	33	82
<b>Grand Total</b>	<b>106800</b>	<b>92436</b>	<b>106454</b>	<b>96</b>	<b>00</b>	<b>4837</b>	<b>105</b>	<b>346</b>

**Figure-6: GB-District-Wise distribution of confirmed COVID-19 cases, April 18-24,2021**



**PDSRU-AJK**

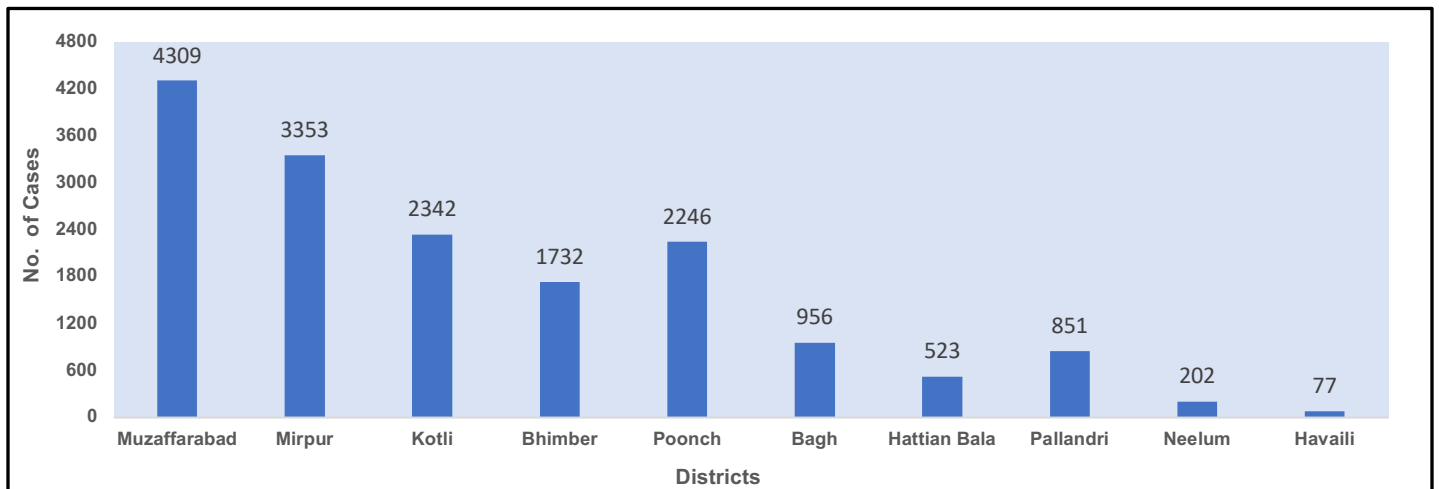
PDSRU AJK has reported total 172,397 suspected cases of COVID-19 and out of these 16,591 were lab confirmed COVID-19 up to April 24, 2021 while no lab-results of suspected cases are awaited. 13,823

cases have recovered from COVID-19 and 462 cases expired due to COVID-19. District Muzaffarabad has the highest number of cases (n=4309) followed by District Mirpur (n=3353), District Kotli (n=2342) and District Poonch (n=2246).

**Table -3: Distribution of suspected and confirmed Covid-19 cases in AJK up to April 24,2021**

Total Suspected Cases	Lab Tests Conducted	Lab Confirmed Cases	Active Cases	Recovered	Total Deaths
172,397	172,767	16,591	2,306	13,823	462

**Figure-7: AJK-District-Wise distribution of confirmed COVID-19 cases up to April 24,2021**

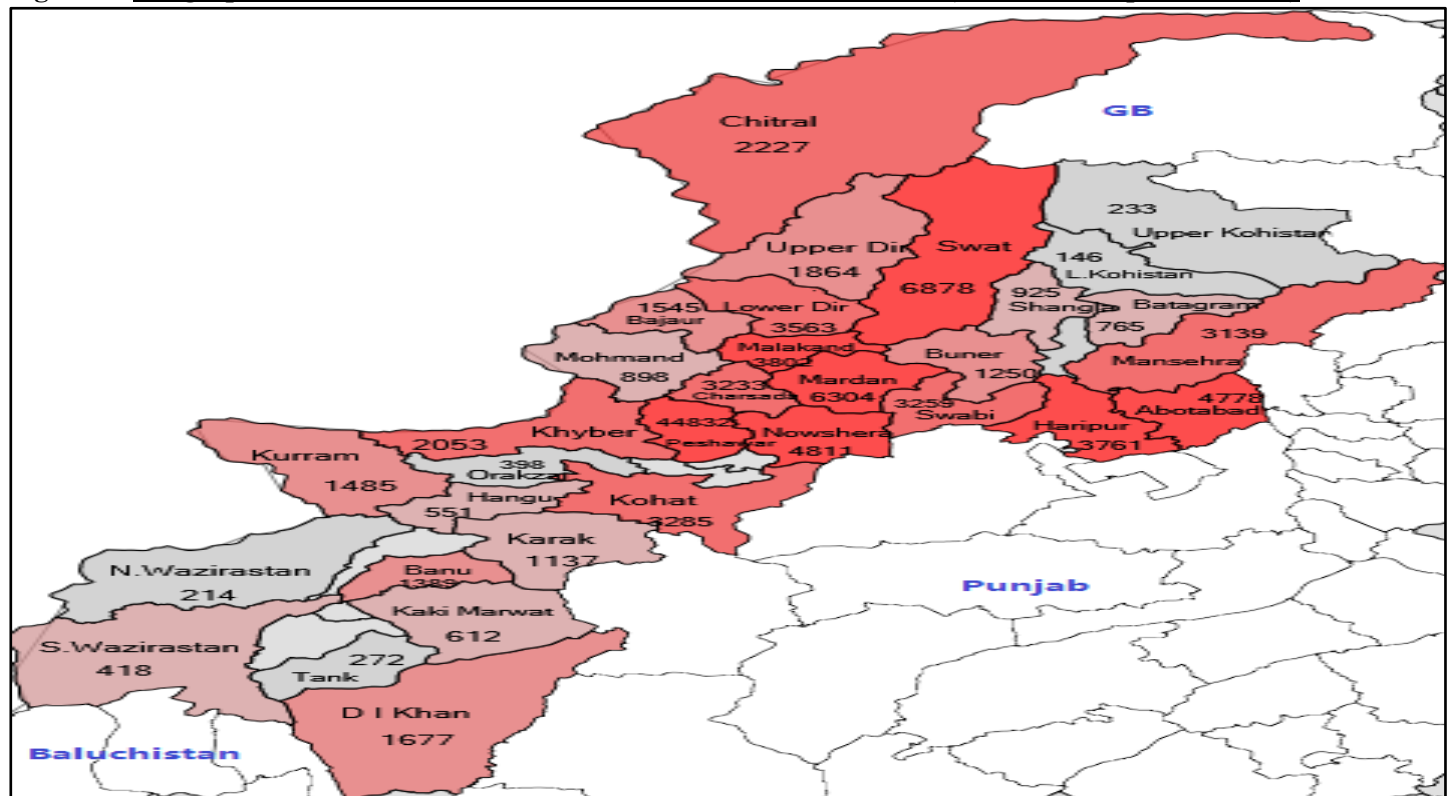


**PDSRU-KPK**

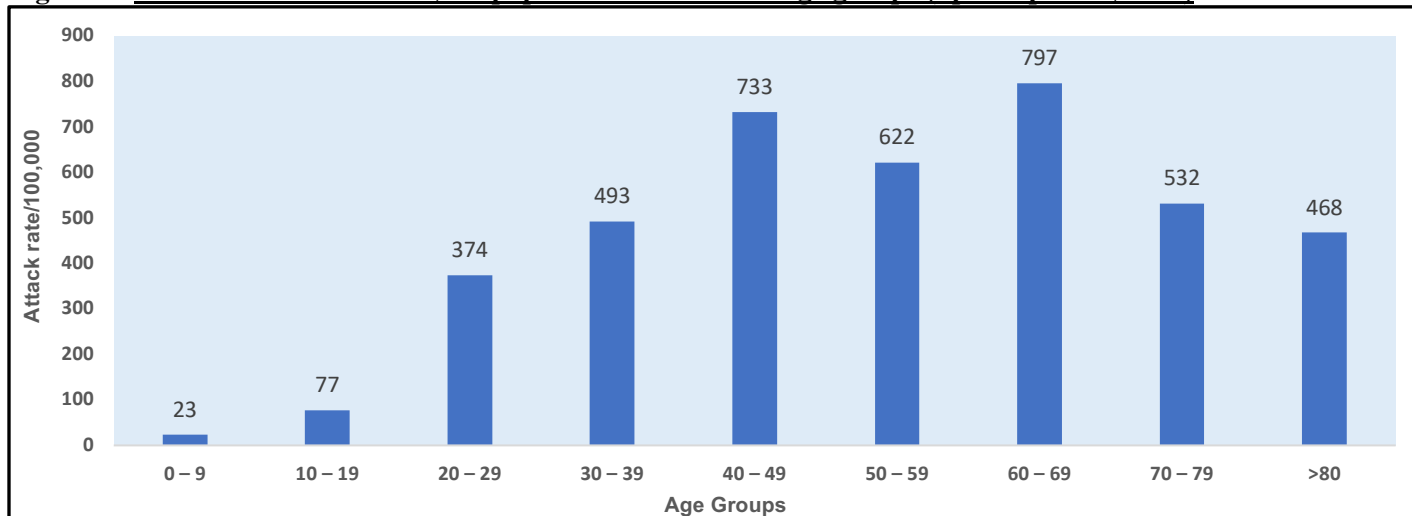
PDSRU KPK has reported total 12,61854 suspected cases of COVID-19 and out of these 1,14,077 were lab confirmed COVID-19 up to April 24, 2021 while 3,134 patients expired. District Peshawar has the highest number of cases (n=44,832) followed by

District Swat (n=6,878), District Mardan (n=6,304) and District Abbottabad (n=4,778). Age group 60-69 years has the highest attack rate/100,000 (AR=797) followed by 40-49 years age group (AR=733) and 50-59 years age group (AR=622).

**Figure-8: Geographical Distribution of COVID-19 Cases in KPK Province (Cumulative up to Week 17)**





**Figure-9: KPK –Attack rates /100,000 population in different age groups (up to April 24, 2021)**

### Communicable Disease Surveillance

#### **Measles Surveillance:**

In 2020, total **1986** confirmed Measles cases reported from all PDSRUs/RDSRUs. In week 17, 169 cases of measles were reported from KPK & Baluchistan.

#### **Dengue Surveillance:**

In 2018, total **3204** Dengue cases reported from Sindh. In 2019 total **24,610** cases reported which includes **48** new case reported from Baluchistan. In week 17, 106 cases were reported from Sindh & Baluchistan.

#### **Diphtheria/Pertussis Surveillance:**

During 2018 total **464** and during 2019 total **614**-suspected cases of Diphtheria were reported. In week 17, 06 cases of pertussis were reported from KPK & Baluchistan.

#### **CCHF Surveillance:**

In 2018, total **63** CCHF (suspected and confirmed) cases were reported from DSRUs and **75** cases have been reported in 2019. During week 17, no case was reported.

**Table-4: Weekly and Cumulative Diseases Updates Apr 24, 2021**

	Disease	Total Cases in 2020	Apr 18-24, 2021	Total Cases in 2021
1	CCHF	19	0	2
2	Varicella	235	0	0
3	Dengue	4024	106	856
4	Chikungunya	0	0	0
5	Measles	1986	169	1847
6	Diphtheria/Pertussis	140	6	14
7	Suspected / confirmed Seasonal Influenza	9	0	0
8	NNT	150	0	18

**Table 5: Dengue cases reported in 2017, 2018, month-wise distribution in 2019 & current week (All provinces and regions)**

Month	KPK	Sindh	AJK	ICT	TDs - KP	Baluch	Punjab	Total
Jan-Dec 2017	18,857	2,884	6	120	406	86	579	22,938
Jan-Dec 2018	332	2088	1	0	175	69	539	3204
Jan-Dec 2019	5214	2937	506	2847	1484	2841	8826	24547
Jan-Dec 2020	3	2722	2	184	0	493	38	3,442
Total	24406	10631	515	3151	2065	3489	9982	54131
24/04/2021	0	56	0	0	0	50	0	106
Total (2021)	0	507	0	0	0	349	0	856

**Extensive drug Resistant (XDR) Typhoid Fever Surveillance in Sindh Province**

In Karachi total 14,092 cases of extensive drug resistance typhoid fever were reported from January 01, 2017 to Apr 24, 2021. During current week total 55 cases of XDR typhoid fever were reported from different hospitals in Karachi. The XDR Typhoid cases were reported mostly among the children and maximum number of XDR cases 5896 (41%) were

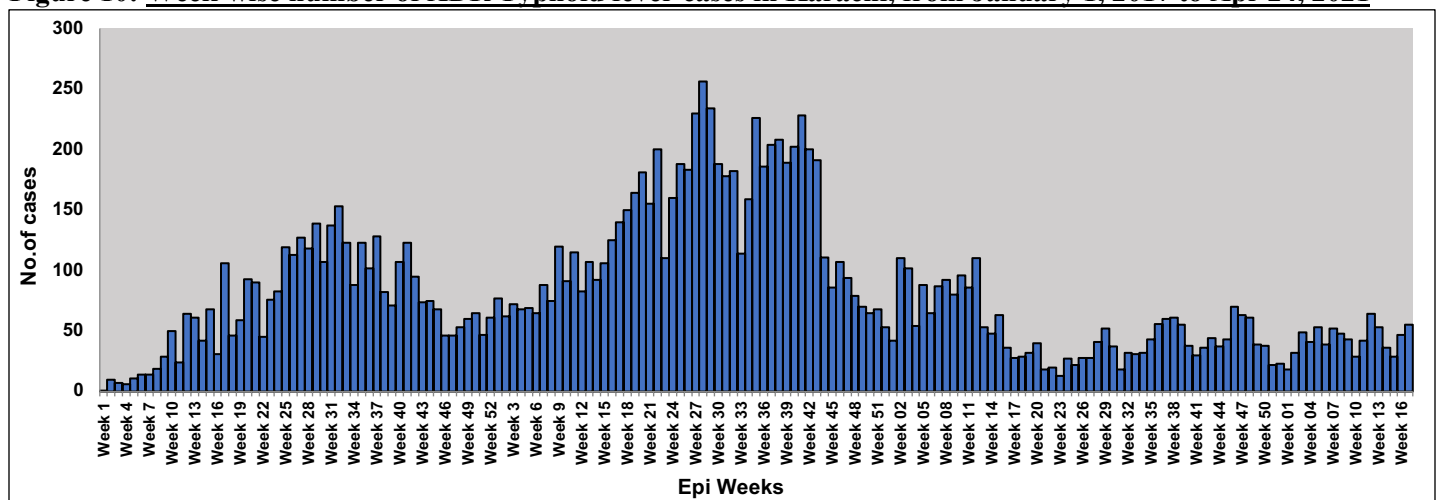
reported in the age group 0-4 years. The overall attack rate was 71/100,000. The age group 0-4 years was the most affected (attack rate 216/100,000) followed by age group 5-9 years (attack rate 153/100,000). Females have higher attack rate 80/100,000 compared to Males.

**Table-6: Number of XDR Typhoid fever cases Karachi from January 1, 2017 to Apr 24, 2021**

Year	Year	XDR Cases
Jan to December	2017	175
Jan to December	2018	3712
Jan to December	2019	7088
Jan to December	2020	2510
Till April 24, 2021	2021	607

Total 14,092

**Figure 10: Week-wise number of XDR Typhoid fever cases in Karachi, from January 1, 2017 to Apr 24, 2021**



**XDR Typhoid Surveillance Data Sindh-Province (Excluding Karachi)**

Total 7383 Salmonella Typhoid cases reported from November 2016 to Apr 24, 2021 from different districts of Sindh province (excluding Karachi). Among these cases 5634 were Extensive Drug Resistant cases. Out of these cases n=3922 (69.6%) were reported from District Hyderabad. The most

affected age group was 0 to 4 years (n=1456) with attack rate 49.3/10000 population followed by 5-9 years of age group (n= 1090) with attack rate 37.2/10000 population. Over all attack rate is 17.9/10000 population (n=3922).

**Table 7: Extensive drug Resistant (XDR) Typhoid Fever Surveillance Hyderabad and other districts**

Year	Hyderabad	Other District	Total
2016	12	0	12
2017	485	4	489
2018	891	207	1098
2019	1645	998	2643
2020	708	415	1123
January 01 – Apr 17, 2021	164	82	246
Current week Apr 18-24, 2021	17	6	23
<b>Total</b>	<b>3922</b>	<b>1712</b>	<b>5634</b>

