



WEEKLY FIELD EPIDEMIOLOGY REPORT

Volume 3—Issue 14 Mar 28-Apr 03, 2021

Date: April 07, 2021

Provincial Technical Officers and fellows of FELTP assigned at the Disease Surveillance, Response Units (DSRU's) are working with provincial, and district health authorities on event based disease surveillance and outbreak response. DSRUs are sharing the disease surveillance data, outbreak reports and activities of FELTP fellows to the Federal Disease Surveillance and Response Unit (FDSRU) at the Field Epidemiology and Disease Surveillance Division (FEDSD) National Institute of Health (NIH) Islamabad on weekly basis.

COVID-19 Surveillance

PDSRUs in Provinces are working with the provincial department of health on COVID-19 surveillance, response and contact tracing since February, 2020 in Pakistan. FELTP fellows Alumni are actively involved in COVID-19 Surveillance throughout Pakistan. Data is being shared with FDSRU on daily basis and a SitRep is being issued by FEDSD National Institute of Health Islamabad. FDSRU has developed a mechanism for tracking of travelers from other countries to Pakistan since 02

February 2020. Daily flights data from international airports in Pakistan is being shared by the Central Health establishment (CHE) Islamabad with FDSRU teams who conduct daily calls on given contact numbers of the travelers to ask about their health status, advise them for immediate contact at the nearest designated hospital in case of COVID-19 symptoms. Total 119,312 travelers have been traced and contacted by March 27, 2021.

Table-1: Weekly Surveillance data COVID-19 by April 03, 2021

Province/ Region	Suspected cases reported	Lab Update		Hospital Update		
	Cumulative	Tests performed (Cumulative)	Tested positive cases (Cumulative)	Still admitted	Discharged/Recovered	Expired
AJK	149,784	150,622	13,321	78	11,186	364
Baluchistan	208,907	209,845	19,734	08	19,143	211
GB	96,962	99,004	5,052	05	4,879	103
Islamabad	1,285,932	1,325,174	60,911	463	48,933	579
KP	1,273,251	1,381,000	91,439	1,214	78,290	2,440
Punjab	3,884,201	3,912,115	231,073	2,224	193,985	6,572
Sindh	3,313,797	3,325,575	266,378	296	256,642	4,509
Total	10,212,834	10,403,335	687,908	4,288	613,058	14,778

PDSRU SINDH

Total 266,925 confirmed COVID-19 cases were reported from Sindh until Apr 03,2021. Most of these cases were reported from District Karachi (n=191,285) followed by District Hyderabad (n=12,411), District Ghotki (n=4,796) and District

Sukkur (n=4,577). Age group ≥ 70 has the highest attack rate (1401/100,000) followed by 50-59 years age group (1395/100,000), 60-69 years age group (1182/100,000) & 30-39 years age group (1087/100,000 population).

Figure-1: Sindh - District-wise distribution of COVID-19 cases (Cumulative up to week 14)

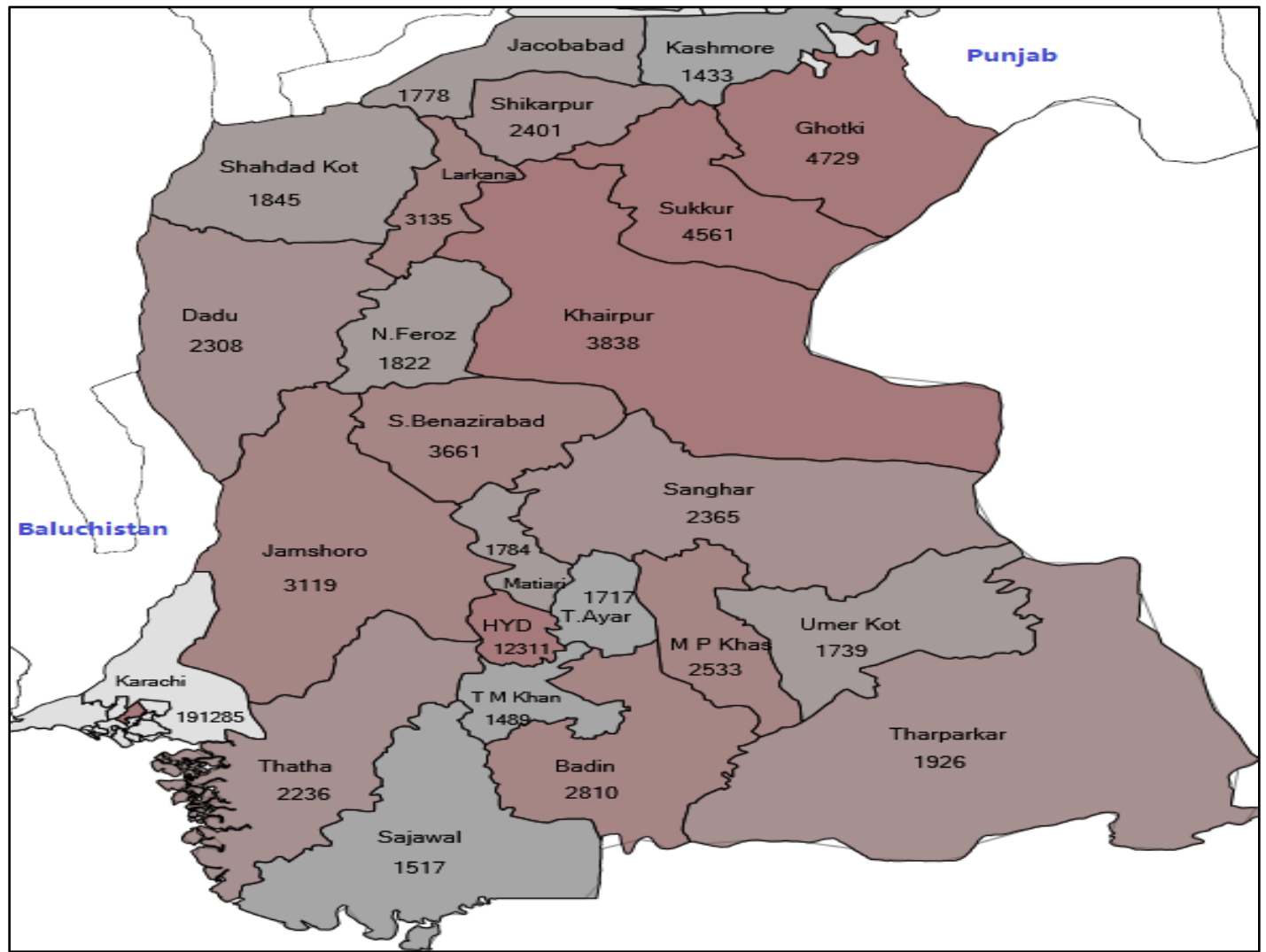
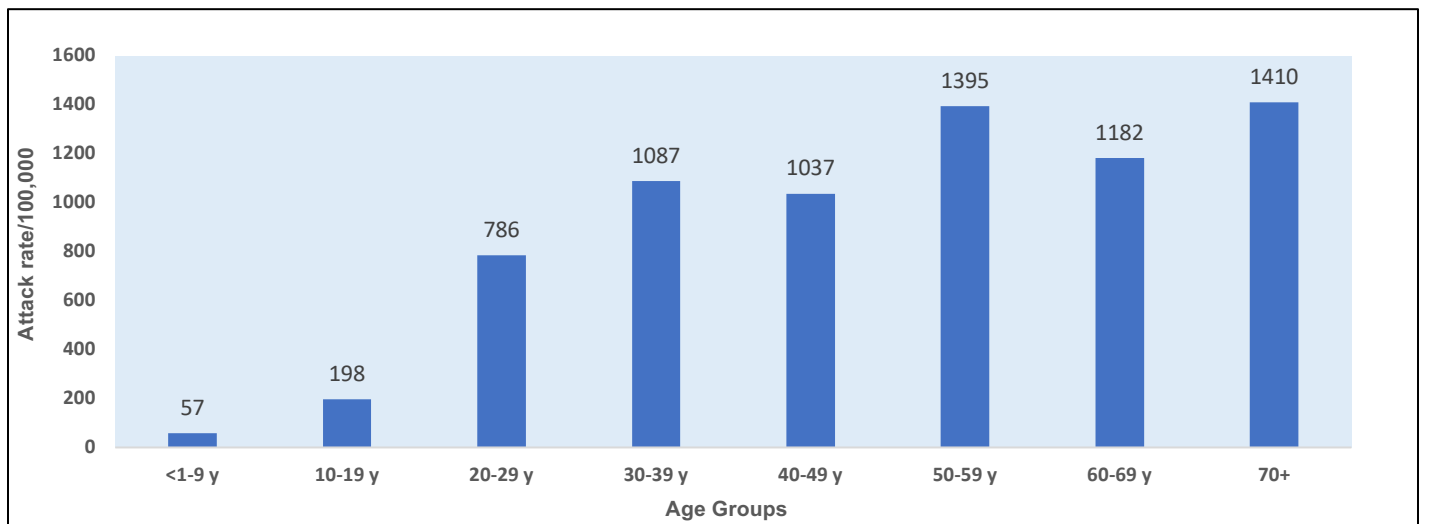


Figure-2: Sindh – Age group-wise Attack Rates /100,000 population (Apr 03, 2021)



PDSRU - Baluchistan province

The department of Health Baluchistan has reported 19,785 positive cases of COVID-19 and 211 deaths until April 03, 2021. 19,162 cases have recovered. District Quetta has the highest number of confirmed cases(n=13,517) followed by District Kech (n=948), District Khuzdar (n=622) and District Lasbela

(n=591). Age group 30-44 has the highest number of COVID-19 cases (n=6,467) followed by age group 15-29 (n=5,713) & age group 45-59 (n=3,244).

Figure-5: Geographical Distribution of COVID-19 Cases in Baluchistan Province (Cumulative up to Week 14)

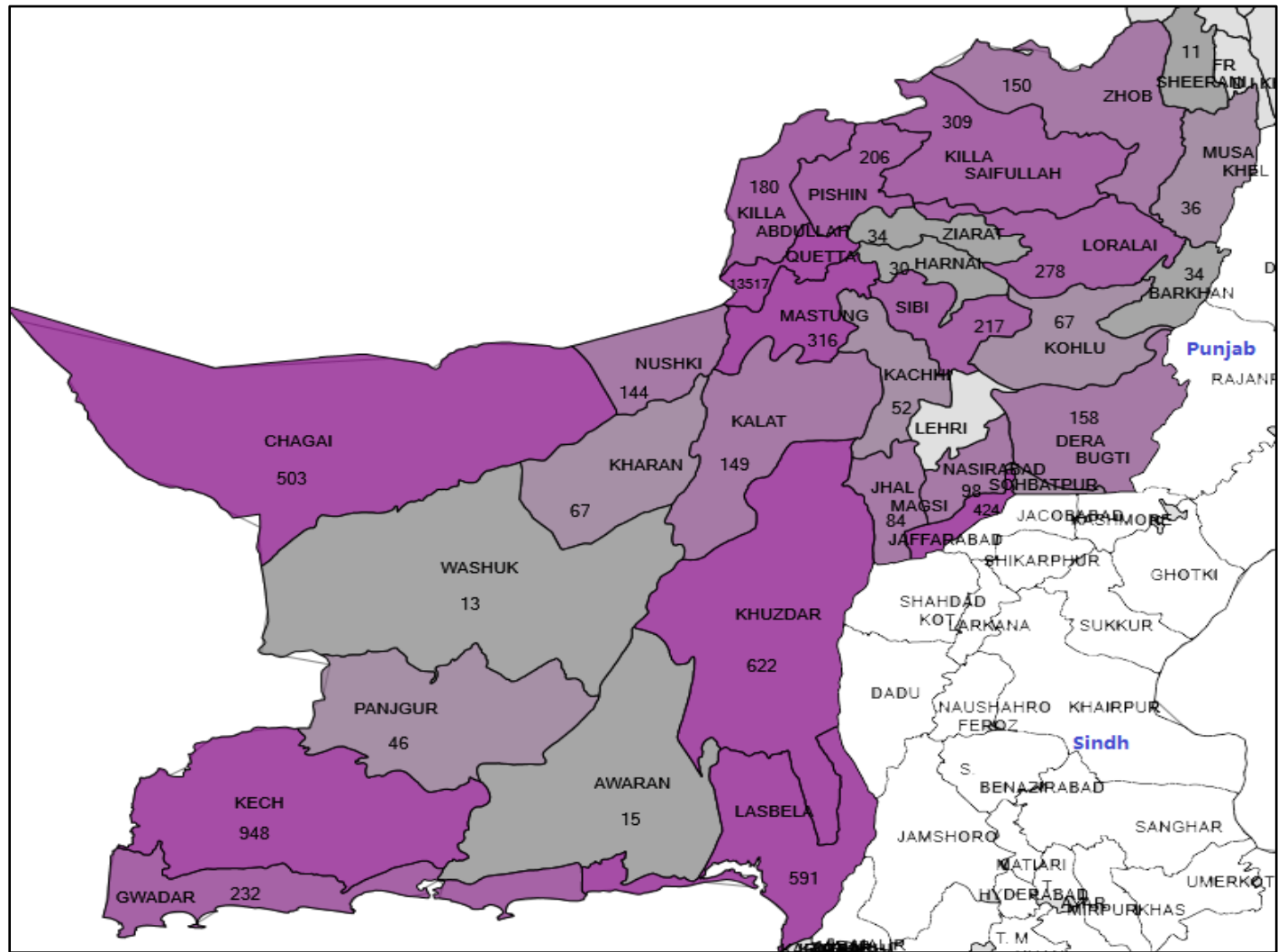
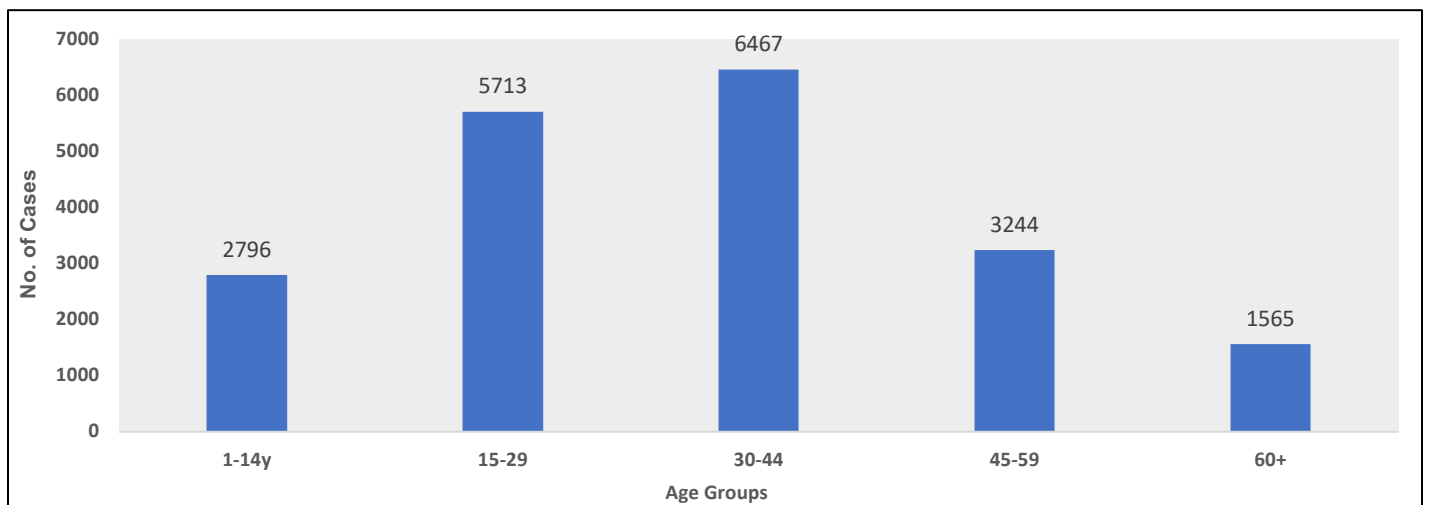


Figure-6: Baluchistan –Age group wise distribution of COVID-19 positive cases (up to Apr 03,2021)



PDSRU- Gilgit-Baltistan (GB)

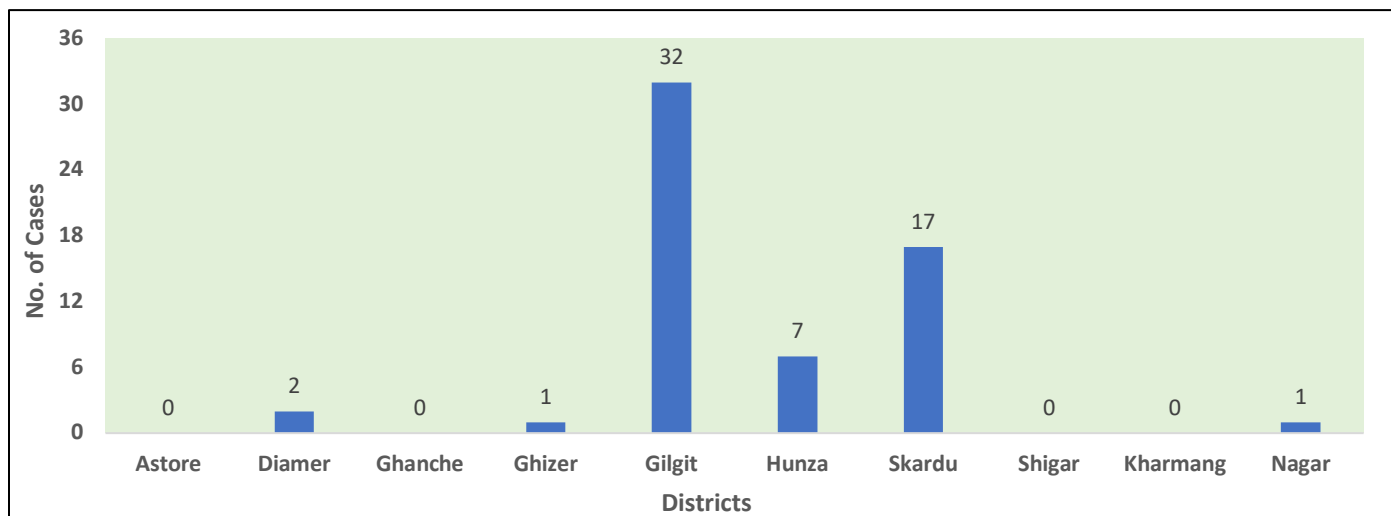
PDSRU GB has reported total 97,649 suspected cases of COVID-19 and out of these 6,072 were lab confirmed COVID-19 up to April 03,2021 and 60 cases were detected during last week, while no lab results are awaited. 97,303 samples were processed and 83,770 suspects were declared negative for

COVID-19. 4,684 cases have recovered from COVID-19 while 103 cases expired. During current week highest number of cases COVID-19 were detected in District Gilgit (n=32) followed by District Skardu (n=17) and District Hunza (n=7).

Table -2 Detail of number of samples, confirmed Covid-19 cases & Deaths in GB up to April 03,2021

District	Number of Samples	Negative	Total Samples Processed	Positive	Awaited	Recovered	Expired	Samples Discarded
Astore	10547	9743	10539	00	00	394	05	08
Diamer	12100	10568	12099	02	00	274	05	01
Ghanche	6263	5829	6167	00	00	120	05	96
Ghizer	7461	6848	7459	01	00	430	07	02
Gilgit	22149	19693	22065	32	00	1743	39	84
Hunza	13534	7480	13517	07	00	619	03	17
Kharmang	4631	4472	4605	00	00	116	00	26
Nagar	5033	4500	5031	01	00	203	04	02
Shigar	4303	4012	4275	00	00	144	04	28
Skardu	11628	10625	11546	17	00	641	31	82
Grand Total	97649	83770	97303	60	00	4684	103	346

Figure-7: GB-District-Wise distribution of confirmed COVID-19 cases, Mar 28-April 03,2021



PDSRU-AJK

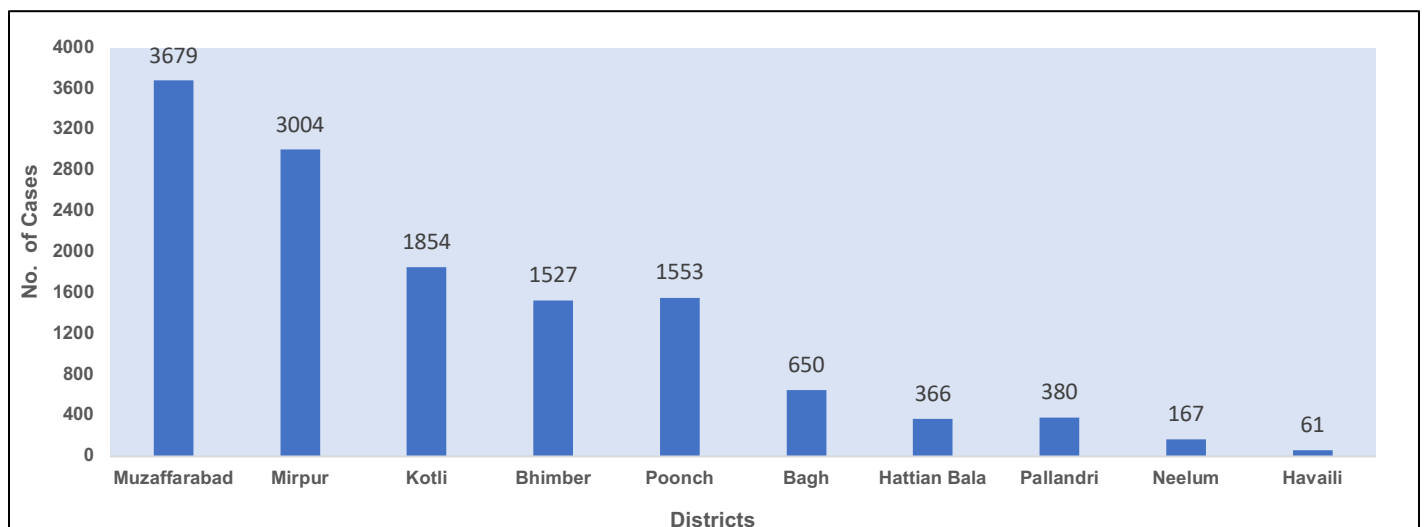
PDSRU AJK has reported total 151,325 suspected cases of COVID-19 and out of these 13,446 were lab confirmed COVID-19 up to April 03, 2021 while no lab-results of suspected cases are awaited. 11,260

cases have recovered from COVID-19 and 371 cases expired due to COVID-19. District Muzaffarabad has the highest number of cases (n=3679) followed by District Mirpur (n=3004), District Kotli (n=1854) and District Poonch (n=1553).

Table -3: Distribution of suspected and confirmed Covid-19 cases in AJK up to April 03,2021

Total Suspected Cases	Lab Tests Conducted	Lab Confirmed Cases	Active Cases	Recovered	Total Deaths
151,325	151,612	13,446	1815	11,260	371

Figure-8: AJK-District-Wise distribution of confirmed COVID-19 cases up to April 03,2021



PDSRU-KPK

PDSRU KPK has reported total 12,73251 suspected cases of COVID-19 and out of these 92,423 were lab confirmed COVID-19 up to April 03, 2021 while 2,457 patients expired. District Peshawar has the highest number of cases (n=37,849) followed by

District Swat (n=5,476), District Abbottabad (n=4,113) and District Nowshera (n=3,849). Age group 60-69 years has the highest attack rate/100,000 (AR=646) followed by 40-49 years age group (AR=594) and 50-59 years age group (AR=504).

Figure-11: Geographical Distribution of COVID-19 Cases in KPK Province (Cumulative up to Week 14)

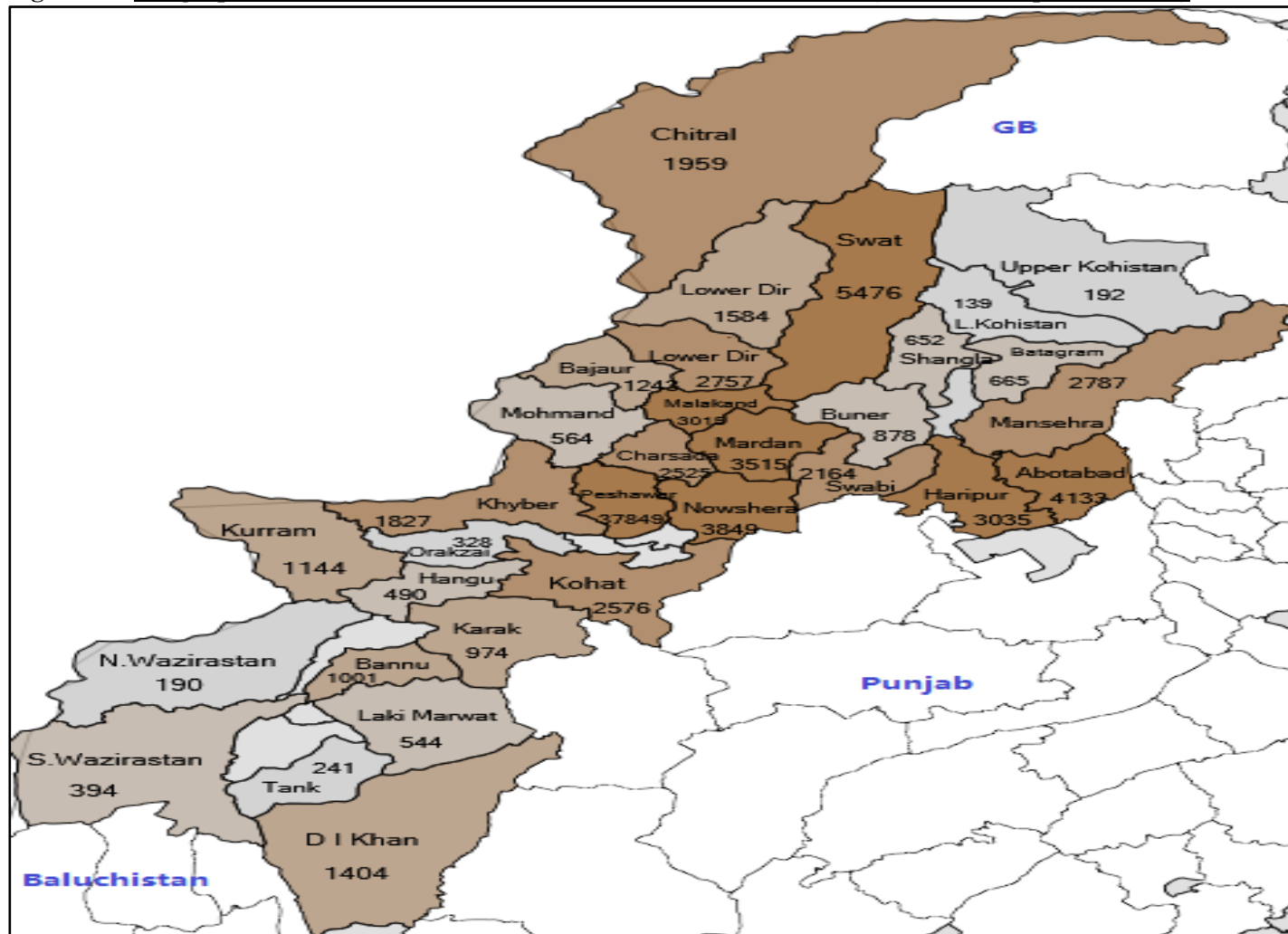
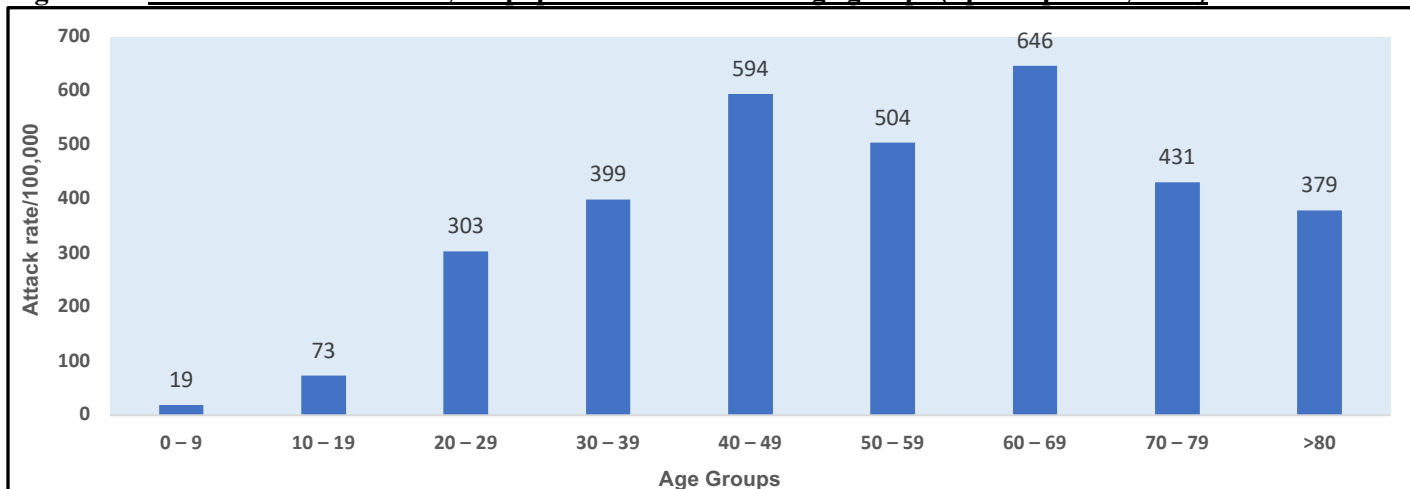


Figure-12: KPK –Attack rates /100,000 population in different age groups (up to April 03, 2021)



Communicable Disease Surveillance

Measles Surveillance:

In 2020, total 1986 confirmed Measles cases reported from all PDSRUs/RDSRUs. In week 14, 133 cases of measles were reported from KPK & Baluchistan.

Diphtheria Surveillance:

During 2018 total 464 and during 2019 total 614-suspected cases of Diphtheria were reported. In week 14, no case was reported.

Dengue Surveillance:

In 2018, total **3204** Dengue cases reported from Sindh. In 2019 total **24,610** cases reported which includes **48** new case reported from Baluchistan. In week 14, 77 cases were reported from Sindh & Baluchistan.

CCHF Surveillance:

In 2018, total **63** CCHF (suspected and confirmed) cases were reported from DSRUs and **75** cases have been reported in 2019. During week 14, 01 case was reported from Sindh.

Table-4: Weekly and Cumulative Diseases Updates Apr 03, 2021

	Disease	Total Cases in 2020	Mar 28-Apr 03, 2021	Total Cases in 2021
1	CCHF	19	1	2
2	Varicella	235	0	0
3	Dengue	4024	77	608
4	Chikungunya	0	0	0
5	Measles	1986	133	1372
6	Diphtheria	140	0	7
7	Suspected / confirmed Seasonal Influenza	9	0	0
8	NNT	150	2	10

Table 5: Dengue cases reported in 2017, 2018, month-wise distribution in 2019 & current week (All provinces and regions)

Month	KPK	Sindh	AJK	ICT	TDs - KP	Baluch	Punjab	Total
Jan-Dec 2017	18,857	2,884	6	120	406	86	579	22,938
Jan-Dec 2018	332	2088	1	0	175	69	539	3204
Jan-Dec 2019	5214	2937	506	2847	1484	2841	8826	24547
Jan-Dec 2020	3	2722	2	184	0	493	38	3,442
Total	24406	10631	515	3151	2065	3489	9982	54131
03/04/2021	0	47	0	0	0	30	0	77
Total (2021)	0	382	0	0	0	226	0	608

Extensive drug Resistant (XDR) Typhoid Fever Surveillance in Sindh Province

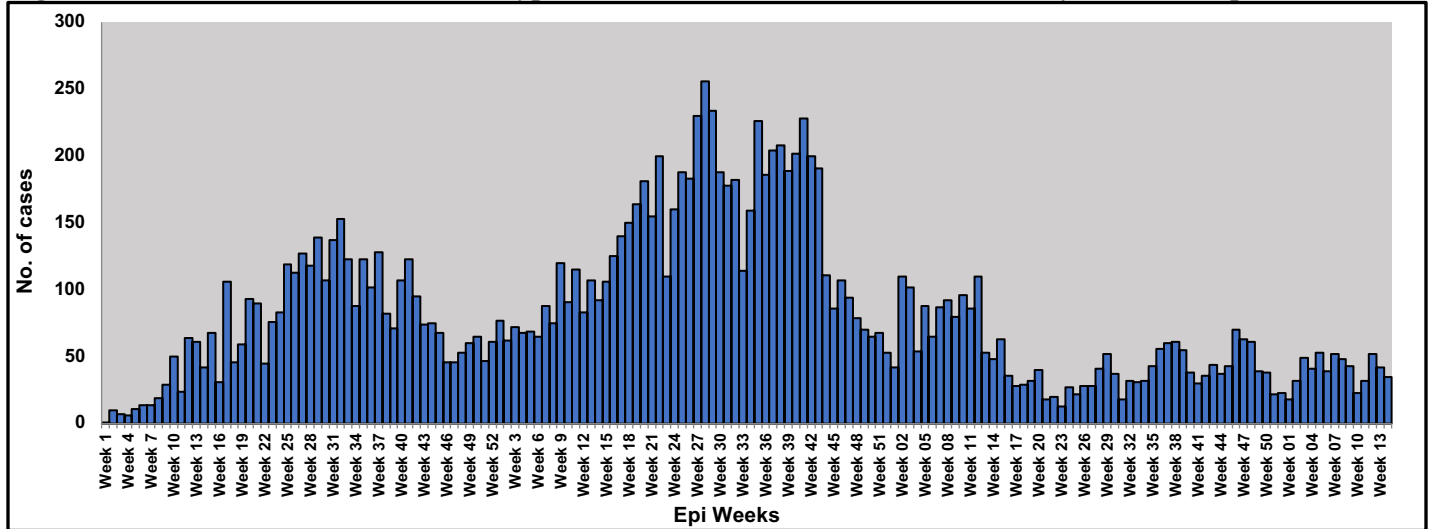
In Karachi total 13,961 cases of extensive drug resistance typhoid fever were reported from January 01, 2017 to Apr 03, 2021. During current week total 35 cases of XDR typhoid fever were reported from different hospitals in Karachi. The XDR Typhoid cases were reported mostly among the children and maximum number of XDR cases 5810 (41%) were

reported in the age group 0-4 years. The overall attack rate was 70/100,000. The age group 0-4 years was the most affected (attack rate 213/100,000) followed by age group 5-9 years (attack rate 152/100,000). Females have higher attack rate 79/100,000 compared to Males.

Table-6: Number of XDR Typhoid fever cases Karachi from January 1, 2017 to Apr 03, 2021

Year	Year	XDR Cases
Jan to December	2017	175
Jan to December	2018	3712
Jan to December	2019	7088
Jan to December	2020	2510
Till April 03, 2021	2021	476
Total		13,961

Figure 13: Week-wise number of XDR Typhoid fever cases in Karachi, from January 1, 2017 to Apr 03, 2021



XDR Typhoid Surveillance Data Sindh-Province (Excluding Karachi)

Total 7299 Salmonella Typhoid cases reported from November 2016 to Apr 03, 2021 from different districts of Sindh province (excluding Karachi). Among these cases 5571 were Extensive Drug Resistant cases. Out of these cases n=3877 (69.6%) were reported from District Hyderabad. The most affected age group was 0 to 4 years (n=1442) with attack rate 48.9/10000 population followed by 5-9 years of age group (n= 1080) with attack rate 36.9/10000 population. Over all attack rate is 17.7/10000 population (n=3877).

Table 7: Extensive drug Resistant (XDR) Typhoid Fever Surveillance Hyderabad and other districts

Year	Hyderabad	Other District	Total
2016	12	0	12
2017	485	4	489
2018	891	207	1098
2019	1645	998	2643
2020	708	415	1123
January 01 – Mar 27, 2021	127	66	193
Current week Mar 28-Apr 03, 2021	9	4	13
Total	3877	1694	5571

Figure 14: XDR Typhoid Cases District Hyderabad Nov-2016 to Apr 03, 2021

